

LOUISIANA ENGINEER & SURVEYOR JOURNAL

FEBRUARY 2026 - VOL. 29 NO. 1

INSIDE THIS ISSUE

LAPELS

LETTER FROM THE CHAIRMAN

PAGE 3



ACEC/L ACEC

MESSAGE FROM THE CHAIR OF THE
BOARD

PAGE 8

ASSOCIATION OF ENGINEERING & SURVEYING COMPANIES

LES

PRESIDENTIAL PRIVILEGE

PAGE 10



STRENGTHENING THE VOICE AND VALUE OF ENGINEERING IN LOUISIANA



Sherri LeBas, P.E.
ACEC/L 2025-2026
Chair of the Board

ACEC



Louisiana Engineering Society

1800 City Farm Drive, Building 5, Suite B, Baton Rouge, LA 70809

Phone: (225) 924-2021

E-mail: les@les-state.org | Website: <http://www.les-state.org>



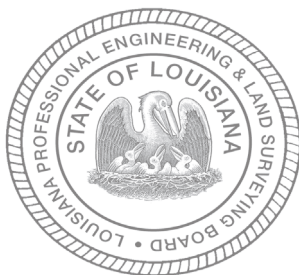
AMERICAN COUNCIL OF ENGINEERING COMPANIES

American Council of Engineering Companies of Louisiana

18212 E. Petroleum Drive, Building 7, Baton Rouge, LA 70809

Phone: (225) 927-7704

E-mail: acecl@acecl.org | Website: <http://www.acecl.org>



Louisiana Professional Engineering and Land Surveying Board

8550 United Plaza Boulevard, Suite 903, Baton Rouge, LA 70809

Phone: (225) 925-6291 | Fax: (225) 925-6227

Website: www.lapels.com

LOUISIANA ENGINEER AND SURVEYOR JOURNAL

FEBRUARY 2026 – Vol. 29 No. 1

The Louisiana Engineer & Surveyor Journal

(ISSN: 15275965, USPS 588-360)

1800 City Farm Drive

Building 5, Suite B

Baton Rouge, LA 70809

This is the official publication of the Louisiana Engineering Society, the Louisiana Professional Engineering and Land Surveying Board, and the American Council of Engineering Companies of Louisiana.

This magazine is published quarterly.
“PERIODICALS POSTAGE PAID at Baton Rouge, LA.”

POSTMASTER—Please send address changes to:

The Louisiana Engineer & Surveyor Journal

1800 City Farm Drive, Bldg. 5, Ste. B, Baton Rouge, LA 70809

Telephone: (225) 924-2021

ADVERTISING RATES

SIZE	COST PER ISSUE	COST PER YEAR
Full Page Inside	\$1,200	\$3,840
Full Page Back Cover	\$1,500	\$4,800
1/2 Page	\$700	\$2,240
1/4 Page	\$420	\$1,344

- 1) Prices quoted apply to camera-ready copy. A one-time charge will be added for composition of an ad, art work, or if changes are made during the contract period.
- 2) All ads must be prepaid. Advertisements with payment should be sent to LES by the 15th of the month preceding month of issue.
- 3) Published quarterly, February, May, August and November.

PUBLICATIONS COMMITTEE

Mary Claire Ruckert, Managing Editor

The Louisiana Engineering Society, the Louisiana Professional Engineering and Land Surveying Board, and the American Council of Engineering Companies of Louisiana do not guarantee the accuracy of statements made or necessarily concur with opinions expressed in the publication.

MESSAGE FROM THE CHAIRMAN

LINDA H. BERGERON, PE
CHAIRMAN, LAPELS



Linda H. Bergeron, PE
LAPELS Chairman

Why Regulatory Boards Matter: How Louisiana's Engineering and Land Surveying Board Helps Keep the Public Safe

Most people don't think about engineering or land surveying regulation as they go about their day. But every time someone drives across a bridge, buys property, or relies on a drainage system to work during a heavy Louisiana rainstorm, they are benefiting from systems designed—and checked—by licensed professionals. Behind that work is the Louisiana Professional Engineering and Land Surveying Board (LAPELS), a regulatory body whose primary mission is simple but critical: protecting the health, safety, and welfare of the public.

Regulation Isn't Abstract—It's Practical

At its core, regulation exists to answer one important question: Who can the public trust to do this work safely? LAPELS addresses that question through licensure. Before someone can offer engineering or land surveying services in Louisiana, the Board verifies that they meet education, examination, and experience requirements. This process ensures that licensed professionals have demonstrated both technical competence and an understanding of professional responsibility. That gatekeeping function matters. Without it, anyone could present themselves as an engineer or surveyor, leaving the public to sort out qualifications after something goes wrong.

What the Board Actually Deals With

Board meetings aren't theoretical discussions—they focus on real-world issues facing the profession. Over the past year, LAPELS has reviewed disciplinary cases involving expired licenses, unlicensed practice, and failures to meet continuing professional development (CPD) requirements. These cases often highlight common pitfalls: professionals allowing licenses to lapse, firms operating without a properly designated supervising professional, or individuals misunderstanding CPD obligations. In many instances, enforcement actions included fines, required education, or corrective measures rather than severe penalties. The goal is not punishment for its own sake, but accountability and improvement—making sure problems are corrected before they affect public safety.

Continuing Education: Staying Current Matters

Engineering and land surveying are constantly evolving. New technologies, updated standards, and changing environmental conditions mean yesterday's knowledge isn't always enough. That's why LAPELS places strong emphasis on continuing professional development. Board activity in the past year reflects ongoing efforts to clarify CPD requirements, address noncompliance fairly, and

update rules to better align with how professionals actually practice today. When CPD requirements are enforced, the result is a workforce that stays informed—something that directly reduces risk and improves outcomes for the public.

Rule Updates That Reflect Reality

Another key area of board activity this year has been reviewing and updating rules. These updates may not make headlines, but they matter. Adjustments to disciplinary guidelines, practice standards, and administrative procedures help ensure that regulations keep pace with modern practice while remaining fair and enforceable. This kind of rulemaking reflects a broader truth about regulation: it isn't static. Effective boards listen, evaluate, and adapt—balancing public protection with the realities professionals face in the field.

Enforcement Builds Trust—For Everyone

Enforcement is often misunderstood as adversarial, but it plays an essential role in maintaining trust in the professions. When the public knows there is a clear process for investigating complaints and addressing misconduct, confidence increases—not just in the Board, but in licensed engineers and surveyors as a whole. From a professional standpoint, enforcement also levels the playing field. Licensees who follow the rules should not be undercut by those who ignore them. Board action helps ensure fairness and integrity across the profession.

Transparency and Public Accountability

LAPELS operates in the open, through public meetings, published minutes, and accessible laws and rules. This transparency allows both professionals and the public to see how decisions are made and how standards are applied. That openness is part of what makes regulation effective. Trust grows when people understand the process and see that it is consistent, thoughtful, and focused on public welfare.

A Quiet but Essential Role

Regulatory boards rarely attract attention unless something goes wrong. But their impact is felt every day in the safety, reliability, and professionalism of engineering and surveying services across Louisiana. Through licensing, education, rulemaking, and enforcement, LAPELS helps ensure that the people shaping Louisiana's built environment are qualified, accountable, and committed to ethical practice. It's a role that may operate quietly—but it is fundamental to public safety and public trust.

A MODERN LOUISIANA GEODETIC CONTROL NETWORK

J. ANTHONY CAVELL, PLS, CFEDS
STATE GEODETIC COORDINATOR – C4G/LSRC

Modern society depends on geographic data that is accurately and reliably spatially referenced. In response to this and the decreasing availability of up-to-date traditional control (reference) data LSU C4G & LSRC has initiated and is developing - GULFnet. The initial implementation of the statewide geodetic network, as detailed herein, had its genesis in 2002 by Professor Roy Dokka with the partnership between the LSU Center for GeoInformatics (C4G) and NGS creating the Louisiana Spatial Reference Center (LSRC), which has developed a master plan for a modern statewide geodetic control network for Louisiana and the Gulf Coast. It inherited earlier efforts from Professor Gary Kelly and the LSU Remote Sensing and Imagery Laboratory of the Civil Engineering Department. Located on the rooftop of the Center for Engineering and Business Administration (CEBA) Building (now Patrick Taylor Hall) and a Cooperative Base Network Control Station named "LSU 1". Part of the High Accuracy Reference Network (HARN). It was also designated as a Continuously Operating Reference Station (CORS). LSU 1 was updated with newer equipment and designated 1LSU In 2003. According to plan, each network station shall have at least the following geodetic values – latitude, longitude, northings, eastings, height (orthometric & ellipsoidal), velocity (magnitude & direction), and stated accuracies. This network will also achieve the goals of the federal National Height Modernization initiative as determined by the LSRC in consultation with NGS.

C4G's mission is to be the vanguard for providing and ensuring an accurate, precise, and consistent geographic reference framework for the State, utilize the positional data collected over time to produce an exceptional level of research and service to the State for mitigating the hazards attributed to subsidence. LSRC's goal is to establish a geodetic control network consisting of Continuously Operating Reference Stations (CORS) statewide control network (GULFnet). However, the implementation includes passive (in-ground) stations, as well as CORS, primarily because of their value for monitoring geologic changes and historical significance, as well as educational laboratories. The master plan includes systematic network maintenance procedures that minimize the unique challenges within Louisiana to maintain control values up to date, i.e., procedures that monitor temporal changes in geodetic coordinates due to subsidence, tectonic motion, and anthropogenic activity.

The described statewide network fully utilizes the existing CORS and related data-processing infrastructure that have been established by decade of investments, totaling over millions of dollars. Thus, the planned network not only provides an accurate, consistent foundation for Louisiana's spatial referencing needs, but also facilitates the continuation of this vital scientific research.

CORS are to be located throughout the state with the goal of a nominal spacing of 70 kilometers (43 miles). Passive stations (in-ground monuments) are an accessory to the network supplementing the CORS and function as sensors for more detailed observations the geologic changes. Pre-existing passive stations exist primarily along selected transportation corridors and other areas, primarily set previously by others. New passive marks are often established as reference marks for CORS and/or as gravity monuments and some for student training.

The implementation, as outlined, can be accomplished as sufficient funds are available. This includes constructing new CORS, installing new passive station monuments, and performing observations, data processing, and adjustments for the entire network. The on-going support and maintenance efforts are accomplished by LSRC staff. The operational costs tend to be less than \$1 million annually and are currently achieved through the support of subscribers to the Real-Time-Network services (C4Gnet.XYZ).

C4G and the LSRC have received outside support from time to time from NSF, NGS, NGA, the Legislature, the LSU Board of Regents, La. DOTD and others. At present, there are no grants or other funding sources. Annual (on-going) funds are critical to the long-term success of the network because of the cost of equipment improvement and maintenance as well as the significant geologic motion and subsidence issues throughout Louisiana.

Access to the GULFnet basic geodetic data, is available at no charge to all users. The C4Gnet.XYZ service is available by subscription and is the foundational funding for minimal day-to-day operations.

ENFORCEMENT REPORT

MORGAN GEORGETOWN BOARD INVESTIGATOR



Morgan Georgetown
Board Investigator

MULTIPLE VIOLATIONS:

Walter Zehner, III, a licensed professional engineer whose license expired on September 20, 2021, and was never renewed, was found that he offered to provide engineering services in Louisiana and provided engineering services on projects in Louisiana with an expired license between 2020 and 2025, by signing engineering drawings and applying his professional seal, with some projects not containing Respondent's signature adjacent to or across his professional engineer's seal, in violation of La. R.S. 37:698(A)(9) and (16) and La. R.S. 37:698(A)(6), to wit, Title 46:LXI§2701(A)(2)(f) and (A)(4)(a). During these times, Respondent failed to respond to a subpoena issued to him by the Board and otherwise failed to respond to any other inquiries, correspondence, or requests for documents sent to him by the Board in violation of La. R.S. 37:698(A)(10) and La. R.S. 37:698(A)(6), to wit LAC 46:LXI§2501(E). Respondent failed to appear at the hearing on November 17, 2025, for trial of these preferred charges, and all charges against him were sustained by unanimous vote of the hearing panel. Respondent was ordered to cease and desist practicing engineering in Louisiana, and his license to practice as an engineer in Louisiana was permanently revoked, with Respondent ordered to pay a fine of \$15,000.00 and to reimburse Board costs of \$72,269.50. It was ordered that the Final

Board Order shall be published on the Board's website and a summary of this matter shall be printed in the official journal of the Board, the Louisiana Engineering and Land Surveyor Journal, and reported to the National Counsel of Examiners for Engineering and Surveying (NCEES), identifying Respondent by name.

FUTURE LAPELS BOARD MEETING DATES

Tuesday, March 3, 2026
(Lafayette, LA)

Monday, June 1, 2026

Monday, July 20, 2026

Monday, September 14, 2026

Monday, November 9, 2026



*Donna Sentell, LAPELS Executive Director,
and Shanna Hubble, LAPELS Licensing
Analyst, participated in the GIS Day at Nicholls
University in November 2025.*

Board Members

Linda H. Bergeron, PE
Chairman
Byron D. Racca, PE
Vice Chairman
Janice P. Williams, PE
Treasurer
James H. Chustz, Jr., PLS
Secretary

Vijaya Gopu, Ph.D., PE
Gordon E. Nelson, PE
Susan H. Richard, PE
Byron E. Trust, PE
Robert L. Wolfe, Jr., PE, PLS
Reginald L. Jeter, PE
Connie P. Betts, PE

Board Staff

Donna Sentell
Executive Director

Chantel McCreary
Deputy Executive Director

www.lapels.com

LAPELS

NEWLY CERTIFIED & LICENSED • OCTOBER 1 - DECEMBER 31, 2025

LAND SURVEYOR INTERNS

Aydell, Cole, LSI

PROFESSIONAL SURVEYORS

Ardoyn, Michael, PLS
Barthol, John, PLS
Claus, Russell, PLS
Leonard, Scott, PLS
Matherne, Marcus, PLS
Newman, John, PLS
Shultz, Neil, PLS
Vice, Wayne, PLS

SURVEYING FIRMS

Parish Point Surveying, LLC

ENGINEER INTERNS

Abraham, Myra, EI
Achord, Chandler, EI
Ashlock, Brandon, EI
Babin, Evan, EI
Broussard, Matthew, EI
Burke, Austin, EI
Cahill, Abigail, EI
Caldera, Claudia, EI
Chen, Bowu, EI
Darr, Kennedy, EI
Dhungel, Suraj, EI
Dixon, Trent, EI
Donlon, Stephen, EI
Drozda, Nicholas, EI
Duncan, John, EI
Elnaml, Ibrahim, EI
Fernandez, Nelson, EI
Fisher, Aaron, EI
Fuentes, Jonathan, EI
Gojaye, Kanan, EI
Jaubert, Zachary, EI
Kleman, Caleb, EI
Lauret, Cody, EI
LeJeune, Josh, EI
Lewis, Jerald, EI
Mansfield, Patrick, EI
Marsiglia, Matthew, EI
Metzger, Julian, EI
Michel, Cole, EI
Morgan, Destiny, EI
Pathak, Prativa, EI
Powell, Mary, EI
Powell, Trellis, EI
Rachal, Ethan, EI
Ripley, Luke, EI
Royster, Duncan, EI
Sarkar, Md Tanvir, EI
Skeath, Emma, EI
Solino, Adam, EI
Sowole, Olantun, EI
Sultana, Taniya, EI
Swann, Katie, EI
Swanson, Ian, EI
Thompson, Claude, EI
Weathersby, David, EI

PROFESSIONAL ENGINEERS

Abdullah, Hayder, PE
Acker, Matthew, PE
Admuthe, Sushant, PE
Ajam, Alexander, PE
Alhakeem, Mustafa, PE
Allen, Shannon, PE
Almofraji, Naba, PE
Anadu, Oluebubechukwu, PE
Ancheta Vides, Cesar, PE
Anderson, Tyler, PE
Andres, Shaun, PE
Antonioli, Joseph, PE
Badalamenti, Antonino, PE
Balls, Nolan, PE
Barker, Daniel, PE
Barnett, Steven, PE
Baumgardner, Matthew, PE
Bech, Daniel, PE
Berzas, Ryan, PE
Blackwell, Joseph, PE
Bohannon, Samuel, PE
Botazzi, Giancarlo, PE
Bray, Rebecca, PE
Carlson, Austin, PE
Carlson, Blair, PE
Carter, Wade, PE
Casebeer, Christopher, PE
Cash, Matthew, PE
Castano Garcia, Francisco, PE
Chapman, Nathan, PE
Chen, Mitchell, PE
Chopin, Marcus, PE
Cisneros, George, PE
Claudio, Nicholas, PE
Cloessner, Matthew, PE
Codday, Kritsada, PE
Coe, Jonathan, PE
Colarossi, Anthony, PE
Colecchia, Mario, PE
Connolly, Tamara, PE
Coulter, Devin, PE
Curry, Robert, PE
Cutter, Dana, PE
Daniels, Wade, PE
Dantzler, Gary, PE
Darnall, John, PE
Davis, William, PE
Deane, William, PE
DeGaish, Austin, PE
DeJong, Thomas, PE
Devereux, James, PE
Devillier, Alec, PE
DiLeo, Hannah, PE
Dolton, Richard, PE
Dube, Farirai, PE
Dugan, Sean, PE
Dutta, Animesh Kumar, PE
Earman, Rush, PE
Elbehy, Hesham, PE
Elliott, Katrina, PE
Elmasian, Nicholas, PE
Estes, Robert, PE
Falgoust, Jesse, PE
Fell, Dustin, PE
Fenske, Ryan, PE
Fidone, Robert, PE
Fielder, Corey, PE
Fitzsimons, Joseph, PE
Flores, Sergio, PE

Frederick, Reece, PE
Gangadharan, Anirudhan, PE
Gao, Zhengboyang, PE
Garrison, Jason, PE
Gilbert, Michael, PE
Giles, Jonathan, PE
Glynn, Eric, PE
Gonzalez Soto, Rafael, PE
Goodman, Kathryn, PE
Graves, James, PE
Green, Jonathan, PE
Guerrero Rivera, Jhonatan, PE
Gundagatti Manjunath, Sumanth, PE
Gunden, Benjamin, PE
Hafner, Jennifer, PE
Halabi, Kamal, PE
Hall, Jacob, PE
Hall, Madeline, PE
Hallman, William, PE
Hann, Ryan, PE
Harman, Landon, PE
Heide, Kristen, PE
Hendon, James, PE
Hicks, Ryan, PE
Hines, Brent, PE
Hines, Christopher, PE
Hirose, Fumitoshi, PE
Hoisington, William, PE
Holstein, Jeffrey, PE
Howard, Christopher, PE
Hubbard, Blake, PE
Hunton, Richard, PE
Idrogo, Nathan, PE
Intriago, Eduardo, PE
Izadi, Mahmood, PE
Jiang, Baitao, PE
Juvvadi, Pradeep, PE
Kennedy, Drew, PE
Khan, Muhammad, PE
Klein, Kevin, PE
Kljajin, Vladi, PE
Knapp, Max, PE
Kovarek, Matthew, PE
Kropiewnicki, Michael, PE
Kukuk, Kyle, PE
L'Hoste, Morgan, PE
Layne, Todd, PE
Layton, Morris, PE
Lazzara, Jeremy, PE
LeBlanc, Andrew, PE
Lee, Yong, PE
Leonard, Patrick, PE
Lewis, James, PE
Loughrey, James, PE
Lowe, Jeffrey, PE
Martin, Robert, PE
Mason, Hunter, PE
Mathur, Sameer, PE
Matiz Chica, Jorge, PE
Matthews, Jack, PE
Mattlin, Kenneth, PE
May, Stephen, PE
McDonald, Colin, PE
McGettigan, Daniel, PE
Melancon, Cassidy, PE
Merkel, Grant, PE
Mills, Ian, PE
Mills, Zachary, PE
Minihan, Larissa, PE
Munz, William, PE
Murray, Katharine, PE

NEWLY CERTIFIED & LICENSED • OCTOBER 1 - DECEMBER 31, 2025

Nevlud, Stephen, PE
 Nixon, Jake, PE
 Noel, Garrett, PE
 Norris, Brent, PE
 Okorie, Michael, PE
 Oliveira, Kevin, PE
 Oyster, Ryan, PE
 Panther, Edward, PE
 Paone, Elisa, PE
 Passarella, Robert, PE
 Patel, Mitalben, PE
 Pellegrino, Nicholas, PE
 Perez Ortega, Bernardo, PE
 Petaja, Matthew, PE
 Pezl, John, PE
 Pfeifer, Brian, PE
 Pflieger, Thomas, PE
 Prabhu, Akshay, PE
 Prigmore, Jay, PE
 Radesky, Anthony, PE
 Rasmussen, Matthew, PE
 Ray, Mason, PE
 Reed, Alex-Keith, PE
 Resendez, Lance, PE
 Reyes, Kaycee, PE
 Rezaian, Reza, PE
 Riley, Zachary, PE
 Rodriguez, Andres, PE
 Rodriguez, Timothy, PE
 Rodriguez Lopez, Diego, PE
 Rotoli, Vincenzo, PE
 Ruby, Noah, PE
 Rullman, Evan, PE
 Runkle, John, PE
 Russinko, Gary, PE
 Sabol, Rick, PE
 Salazar, Dakota, PE
 Satvati, Sajjad, PE
 Save, Swaraj, PE
 Sayem, Sarkar, PE
 Schaff, Cameron, PE
 Schmidt, Michelle, PE
 Schneider, Laura, PE
 Schrader, Justin, PE
 Schultz, Josh, PE
 Shaver, Derrick, PE
 Sheehan-Dean, Jacqueline, PE
 Siddiqui, Shehzaib, PE
 Simone, Alessandra, PE
 Sirb, Joshua, PE
 Soltani, Alan, PE
 Soriano, Maria Ellen, PE
 Spiteri, Jon, PE
 Stanbery, Robert, PE
 Stegman, Bruce, PE
 Stern, Remy, PE
 Stich, David, PE
 Stiles, Terry, PE
 Suarez Bolivar, Valeria, PE
 Sunkara, Ajaya, PE
 Sutherland, Benjamin, PE
 Tait, Lucas, PE
 Terrillion, Derek, PE
 Thompson, Brent, PE
 Tran, Huy, PE
 Tran, Johnston, PE
 Truong, Peter, PE
 Tupper, Patrick, PE
 Valenta, James, PE
 Van Doren, Alyssa, PE
 Vancura, Mary, PE

Vestfals, Sara, PE
 Wagner, Benjamin, PE
 Wang, Eric, PE
 Washer, Justin, PE
 Weatherford, Todd, PE
 Weir, Christopher, PE
 Westfall, Mark, PE
 Williams, David, PE
 Williams, Wade, PE
 Xu, Lin, PE
 Yap, Victoria, PE
 Zakeri, Ramin, PE
 Zelada-Tumialan, Giuliana, PE

ENGINEERS LICENSED BY ENDORSEMENT

Ituah, Innocent, PE
 Kalyana Kumar, Sanjay Kumar, PE

LAND SURVEYORS LICENSED BY ENDORSEMENT

Poret, Jason, PLS

ENGINEERING FIRMS

Advance Forensic Engineering LLC
 Alpine Intel Commercial Solutions, LLC
 Anderson & Arellano Engineering, PLLC
 Ashworth Leininger Group, Inc.
 Aspect Structural USA Ltd.
 AUC Group, LLC
 Ayd Mill Concrete Engineering LLC
 Bilmar Consulting, LLC
 Burbank Electrical Engineering, LLC
 Cowell Steel Structures, LLC
 Davis Engineering and Consulting LLC
 ECO4 Energy LLC
 Encotech LLC
 Engineering Company of Louisiana, LLC
 Evolving Texas
 Exyte U.S., Inc.
 Fortis Consulting Engineers, LLC
 GMS Structural Engineers and Building
 Envelope Consultants
 Greathouse Engineering, LLC
 Herrick-Saylor Engineers, D.P.C. Company
 Herzig Engineering, LLC
 Hightec Energy LLC
 Holstein White, Inc.
 Israelmarks, Inc.
 Jaros, Baum & Bolles, Inc.
 Leary Marine Engineering LLC
 Lee Engineering, LLC
 Madison Engineering Group, LLC
 Mark Nannis Structural Engineers, Inc.
 MBCM Management, Inc.
 Norlee Group
 Optimum Energy Co, LLC
 Orcus Fire & Risk, LLC
 Perigon International, Inc
 Pontchartrain MEP Engineering LLC
 Resilient Power, LLC
 Rigid Global Buildings, LLC
 Rowe Consultants, Inc
 Salas O'Brien, Inc. of California
 Salas O'Brien Industrial Ally, LLC
 Southland Steel Fabricators Inc.
 StrucSure Inspections LLC
 Subterra USA Corporation
 Talman Consultants LLC
 VG LNG Engineering LLC
 Volt Solutions LLC
 Waller Engineering, PLLC
 WBR Engineers and Consultants, LLC

STRENGTHENING THE VOICE AND VALUE OF ENGINEERING IN LOUISIANA



Sherri LeBas, PE
Chair of the Board
ACEC of Louisiana

Louisiana's engineering firms operate in one of the most demanding environments in the country. Our members navigate complex technical challenges, evolving regulations, compressed schedules, and increasing risk—while delivering infrastructure that supports economic growth, public safety, and quality of life. The impact is felt statewide. ACEC Louisiana exists to ensure the dedication, expertise, and value of our members are recognized, supported, and effectively represented.

I joined the ACEC Louisiana Board in 2018 and have witnessed firsthand the commitment of members who volunteer their time to address education, legislation, policy, and agency collaboration—all with the goal of improving the business of engineering and the services we provide. I am honored and grateful for the opportunity to serve as Chair. In addition to our dedicated volunteers, we are fortunate to have an outstanding staff led by President and CEO Barker Dirmann, along with Janet Landry and Courtney Hutchinson, whose efforts are essential to supporting our membership. I sincerely thank them for their continued dedication.

Vision and Strategic Direction

As Chair, we held a Strategic Planning Priorities Session on September 18, 2025, bringing together the Board and Committee Chairs. This session provided an opportunity to align goals, share perspectives, and help shape the organization's direction to ensure our priorities remain responsive to member needs and industry trends.

My vision for ACEC Louisiana is straightforward: to strengthen the voice and value of the engineering community by fostering strategic collaboration with public agencies, improving operational efficiency across transportation and other infrastructure programs, and uniting our members around advocacy, innovation, and the infrastructure we deliver. This vision reflects what I consistently hear from members across firm sizes and markets—a desire for clarity, collaboration, fairness, and meaningful engagement in decisions that shape our profession.

Member Engagement and Professional Collaboration

Member engagement is essential to achieving this vision. I am grateful for the strong participation in our committees and events, which provide opportunities for connection, collaboration, and professional growth. The recent ACEC Fall Conference brought agency leaders and members together to discuss key initiatives impacting our industry.

Looking ahead, the ACEC Annual Convention will be held in Washington, D.C., May 3–6, offering the Executive Committee an opportunity to engage directly with federal policymakers and Louisiana's congressional delegation. These discussions are critical as federal funding, regulatory policy, and procurement practices continue to shape project delivery. I also want to recognize National ACEC President and CEO Linda Bauer Darr and her team for their continued advocacy at the federal level. Regionally, the Deep South Convention will take place in Destin, Florida, July 22–25, providing valuable opportunities to share best practices with peer firms. Closer to home, ACEC Louisiana will continue hosting chapter luncheons and virtual committee meetings to gather member feedback.

Advocacy and Investing in the Future

Advocacy remains a core function of ACEC Louisiana. A recent legislative success was strengthening Louisiana's Qualifications-Based Selection requirements, reinforcing the principle that engineering services should be selected based on competence and experience rather than price. Continued collaboration with LADOTD, the Office of Louisiana Highway Construction, the Coastal Protection and Restoration Authority, and Facility Planning and Control remains a priority as we work together to deliver quality projects efficiently for the citizens of our state. ACEC Louisiana represents firms across municipal, environmental, industrial, coastal, energy, and private-sector markets. Growing and diversifying membership, fostering emerging leaders, and mentoring the next generation of engineers remain priorities.

I encourage you to stay engaged, share your feedback, and help move our profession forward. I look forward to the year ahead as we continue making meaningful progress together in 2026.

ACEC OF LOUISIANA AFFILIATE MEMBERS

ACEC Business Insurance Trust	Brown & Brown of Louisiana	Faulk & Winkler, LLC	Headlight
ACEC Life/Health Insurance Trust	Cadence Insurance	Foley & Judell, LLP	Keogh, Cox & Wilson
Advanced Drainage Systems, Inc.	CxA Services, LLC	Galloway Johnson Tompkins Burr & Smith, LLP	Quality Sitework Materials, Inc.
BAR Environmental	Deutsch Kerrigan, LLP	Gulf South Technology Solutions	Tensar Corporation
BFM Corporation, LLC	ELOS Environmental, LLC	Hannis T. Bourgeois, LLP	Turner Insurance & Financial Services, LLC
Breazeale, Sachse & Wilson, LLP	Environmental Technical Sales, Inc.		

REGISTRATION IS NOW OPEN

30th Annual JESC

MARCH 4 - 5, 2026

**CAJUNDOME CONVENTION CENTER
444 CAJUNDOME BLVD, LAFAYETTE, LA 70506**

Join us in Lafayette on March 4 & 5 where LES will be hosting the 30th Annual Joint Engineering Societies Conference. This conference is catered to all engineering professionals in Louisiana of any discipline.

Registration Includes:

- Up to 13 PDHs available
- Admission to all seminars & exhibitor area
- Breakfast each day
- Lunch each day
- Legislative Lunch (Wednesday)
- Lunch & Learn (Thursday)
- Exhibitor Meet & Greet (Wednesday) - The Exhibitor Meet & Greet will be a casino night themed event in which attendees have a chance to mingle with exhibitors while enjoying drinks and hors d'oeuvres. Door prizes will be raffled off during the Meet & Greet, in which attendees must be present to win.
- Scavenger Hunt on Day 2 of the conference

Exhibitor, Sponsor & Speaker opportunities are available

For more information, please visit les-state.org



PRESIDENTIAL PRIVILEGE

GAVIN P. GAUTREAU, PE
LES PRESIDENT

LES



Gavin P. Gautreau, PE
LES President 2025-2026

I hope you all had a wonderful holiday season. As described in the [November 2025 Journal](#), the Louisiana Engineering Center was under contract and near closing. On December 5, 2025, the sale closed with LEF President, Chad Bacas, P.E., Mary Claire Ruckert, LES Executive Director, and myself in attendance. [ITInspired](#) purchased the building and began renovations. They are taking the space to new visions and will have about 30 staff once complete. Items to note about the sale:

Time Capsule: The Engineering Center had a time capsule within the wall, placed there at its dedication. We retrieved it and will create a display cabinet showcasing the dedication plaque (pictured below) for LEF officers to preserve and maintain until the year 2098 when it is due to be opened.

The Center's sale opens up new possibilities for LES and LEF into 2026 and beyond. Newer technology is connecting Engineers to promote and protect the Engineering profession in a virtual age (through Zoom, etc.), vs. landlord responsibilities and maintenance needs on an aging building.



Gavin Gautreau, PE, Mary Claire Ruckert, and
Chad Bacas, PE following the sale of the building

Proceeds from the building sale will be used to:

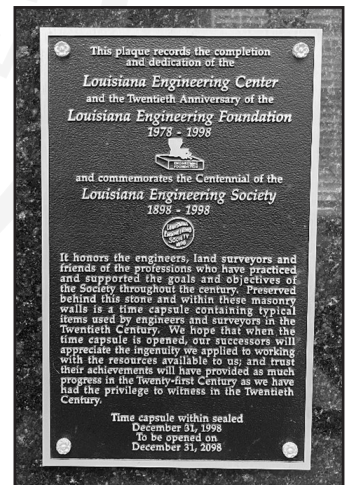
- Fully fund the LES Scholarship Endowment through LEF and allow for additional scholarship funding opportunities.
- Balance accounts between LES and LEF.
- Revamp websites: We're rolling out upgrades to the LES and LEF websites with a refreshed look, improved navigation, and a fully digitized archive of our historical documents and magazines. These new sites will be designed for clarity, efficiency, and ease of use.
- Digitization Effort: There are numerous historical documents that will be scanned and digitized to allow access to LES members on the revamped websites. This includes archived meeting minutes, photographs, special events, and other LES and LEF records.

As efforts continue, we will share more updates.

Please remember to get involved with your local LES chapter. We look to you for insight and feedback. Also, we look forward to seeing you at the [Joint Engineering Societies Conference \(JESC\)](#). Please register as an [attendee](#), a [sponsor](#), or and an [exhibitor](#).

The 2026 Honors & Awards Presentation will also be held on Saturday, March 14, 2026, at the City Club of Baton Rouge. [Registration and sponsorship opportunities are available here.](#)

Best wishes for the New Year - hard to believe it is already 2026. Thank you for your continued support and Engineering efforts.



The dedication plaque from the time capsule

SUPPORT ENGINEERING SCHOLARSHIPS

Every gift makes a difference in the lives of aspiring engineers. By supporting our scholarship program today, you're helping students access the education, resources, and opportunities they need to succeed. Help shape the future of Louisiana engineering. Click here to give and make a lasting impact.

LES CALENDAR OF EVENTS



[Like us on Facebook!](#)



[Connect with us on LinkedIn!](#)



[Visit our website!](#)

FEBRUARY 2026

1-28: MATHCOUNTS Chapter Competitions (statewide)

22-28: National Engineers Week

MARCH 2026

3: LEF Board Meeting (Lafayette)

3: LES Board Meeting (LafayetteA)

4-5: 30th Annual JESC Conference (Lafayette)

9: Legislative Session begins

14: Honors & Awards Presentation (Baton Rouge)

27: State MATHCOUNTS competition (Pineville)

APRIL 2026

10: LES Board Meeting (Baton Rouge)

15: Deadline for copy, Louisiana Engineer, May issue

LES Vision Statement

The Louisiana Engineering Society is the recognized advocate of all licensed engineers in the state of Louisiana.

LES Mission Statement

The Louisiana Engineering Society serves to advance the engineering profession by:

Encouraging ethical and competent practice through licensure and legislative involvement.

Nurturing public awareness of engineers' contributions to society.

Growing the society through licensure & LES membership and public service.

Recognizing engineering achievements.

Become an LES Sponsor!



Support Louisiana's engineering community while gaining year-round exposure to industry leaders across the state. Your sponsorship helps advance the profession — and puts your brand in front of the engineers shaping Louisiana's future.

[Visit us online to become a sponsor today!](#)



**All South
Consulting
Engineers**

Solutions Engineered By Design

- Civil Engineering ■ Surveying ■
- Program Management ■
- Construction Management ■ Disaster Management ■

107 W. Woodlawn
Ranch Road
Houma, LA
70363
985.537.8893

652 Papworth
Avenue
Metairie, LA
70005
504.322.2783

1056 E. Worthey
Street, Ste. D
Gonzales, LA
70737
225.532.1406

LES

WELCOME NEW MEMBERS!

Alexandria Chapter

Jared Samuel Arnold, EI Member*

Baton Rouge Chapter

Chandler Thomas Achord, EI Member*
Peter Bowlin, PE Member
Rittirong Charoenpap, Governmental Employee

Matthew Blake Cloessner, PE Member
Suraj Dhungel, EI Member*
Hannah Nicole DiLeo, PE Member
Ibrahim Ali Ibrahim Elsayed Elnaml, EI Member**

Jesse Falgoust, PE Member
Nelson Wilfredo Fernandez, EI Member*

Blake Fogleman, PE Member
James Fogleman, PE Member
Carol Jean Friedland, PE Member
Jack Godbery, PE Member
Cole Michel, EI Member*
Destiny Morgan, EI Member*
Trey Nicholas, Associate Member
Justin Nugent, PE Member
Adaire Grace Olivier, EI Member*
Prativa Pathak, EI Member*
Mary Faith Powell, EI Member*
Hadley Lane Ragusa, PE Member
Luke Ripley, EI Member*
Duncan Henry Royster, EI Member*
Md Tanvir Ahmed Sarkar, EI Member**
Leland Tycer Smith, PE Member
Katharine M. Willis, PE Member

Bayou Chapter

Jordan Porche, EI Member*
Claude Thompson Jr., EI Member*

Lafayette Chapter

Mark Anthony Aymond, PE Member
Md Jobayer Aziz, Associate Member
Scott Behringer, PE Member
Marcus D. Chopin, PE Member
Kadin David, Associate Member
Alec Matthew Devillier, PE Member
Stephen Alexander Donlon, EI Member*
Reece Patrick Frederick, PE Member
Luke Gibson, Associate Member
Jacob Rhule Hall, PE Member
Markel Herny, Associate Member
Md Imrul Kayes, Associate Member
Md Mainuddin Khaled, Associate Member
Md Zahirul Islam Khan, Associate Member
Kaeden Michael King, EI Member*
Holden Ray Landry, EI Member*
Cassidy D. Melancon, PE Member
Garrett Joseph Noel, PE Member
Danny Paul Poole, III, EI Member*
Ramisa Nawar Promee, Associate Member
Alex-Keith Paul Reed, PE Member
Tanner Carleton Shaddox, PE Member
Imtiaz Taimoor, Associate Member

Lake Charles Chapter

Shannon Jacob Allen, PE Member
Carter Bihm, Associate Member
Kara Ann Brady, Associate Member
Matthew Evan Broussard, EI Member*
Abbie Dupre, Associate Member
Jerald Lewis, EI Member*
Jeevin Maharaj, Associate Member
Megan Moses, Associate Member
Jake Benjamin Nixon, PE Member
Ethan Hunter Rachal, EI Member*
Trent Whitley, PE Member

Monroe Chapter

Trent O'Neal Dixon, EI Member*
Peyton Daniel Matthews, EI Member*

New Orleans Chapter

Evan Paul Babin, EI Member*
Ryan G. Berzas, PE Member
Tristan Kyle Boudreau, EI Member*
Abigail Melling Cahill, EI Member*
Claudia Vanesa Caldera, EI Member**
Bowu Chen, EI Member*
Jonathan S. Coe, PE Member
Andree F. Cortez, PE Member
Kennedi Lynn Darr, EI Member*
James Albert Devereux, Jr., PE Member
John Greer Duncan, Jr., EI Member*
Aaron Fisher, EI Member**
Daniel M. Fontenelle, PE Member
James S. Fraser, PE Member
Jonathan Christopher Fuentes, EI Member*
Justice Robert Groom, EI Member*
Alex Edward Hatcher, PE Member
Zachary Nathaniel Jaubert, EI Member*
Harold Raymond Johnson, III, PE Member
Drew Peyton Kennedy, PE Member
Caleb Geoffrey Kleman, EI Member*
Tim Lyons, PE Member
Patrick Vidal Mansfield, EI Member*
Matthew S. Marsiglia, EI Member*
Julian Metzger, EI Member**
Dominique Moore, EI Member*
John Roumain Peters, IV, EI Member*
Penelope Pichardo, Associate Member
Trellis Armond Powell, EI Member*
Mason Ray, PE Member
Lance M. Resendez, Jr., PE Member
Emily G. Rone, PE Member
Noah Charles Ruby, PE Member
Evan A. Rullman, PE Member
Matthew John Secrest, EI Member*
Olantun Sowole, EI Member*
Jose Suarez, PE Member
Ian James Swanson, EI Member*
Huy G. Tran, PE Member
David Lionel Weathersby, Jr., EI Member*
Hector Dominguez, Associate Member

Non-Resident Chapter

Katie Swann, EI Member**
Myra Ellen Abraham, EI Member*
Carly Chandler, Associate Member
Jacqueline Olga Praino, EI Member*
Emma Marie Skeath, EI Member*
Jackson Lee Tregaskes, EI Member*
Thomas Wilkin, PE Member
Charles Williams, II, EI Member*

Shreveport Chapter

Nathan Thomas Mahony, EI Member*
Gavin Peters, Associate Member
Cathrine Thomas, Individual Sustaining
Peyton Cullen Ulloa, EI Member*
Tim Wright, PE Member

*Denotes members under 30

**Denotes members over 30

LOUISIANA CAPITOL VIEW

FROM HAYNIE AND ASSOCIATES

Session Calendar: Convening, Adjournment, and Length

The 2026 Regular Session will convene at noon on Monday, March 9, 2026, and must adjourn no later than 6:00 p.m. on Monday, June 1, 2026.

Under the Louisiana Constitution, the Legislature may meet up to 60 legislative days within an 85 calendar-day period. If necessary, the Constitution also authorizes the Legislature to extend the session for up to six additional days for the limited purpose of finally passing a bill appropriating money.

Scope of the Session: General Subject Matter, Limited Tax Authority

The 2026 Regular Session is a general session, which means the Legislature may consider a broad range of policy matters affecting state government, private industry, and professional regulation.

However, the Constitution creates a major limitation: no measure levying or authorizing a new state tax, increasing an existing state tax, or legislating state tax exemptions; exclusions, deductions, or credits may be introduced or enacted.

Bill Filing Begins Ahead of the 2026 Regular Session

The Louisiana Legislature is now entering the pre-session bill introduction phase prior to the 2026 Regular Session, and the bill introductions have begun and a handful of instruments are available for review on www.legis.la.gov. Bill introductions will continue to ramp up rapidly as lawmakers, stakeholders, and advocacy groups work against a series of constitutional and procedural deadlines.

Haynie & Associates will continue tracking filings and monitoring early developments in the House and Senate as the session approaches and looks forward to working with the LES Legislative Committee on formulating positions.

Key Deadlines:

Profile Request Deadline (General Bills):

5:00 p.m., Tuesday, February 24, 2026

Session Introduction Request Deadline:

6:00 p.m., Saturday, March 28, 2026 (each lawmaker is allowed to introduce five session introductions)

Local Bills require publication of notice on two separate days at least 30 days prior to introduction.

By March 31st all legislation will be posted on www.legis.la.gov for the 2026 session, but resolutions and studies can be filed during the session.

Special Elections

Several legislative seats will be filled in 2026 special elections, meaning there will be new members joining the Legislature shortly before the regular session begins. At least six legislative seats are expected to be filled, including:

Special election scheduled for Feb. 7, 2026, with a potential March 14, 2026, general/runoff:

Senate District 3 (Orleans & St. Bernard area):

House District 37 (Jennings): special election Feb. 7, 2026

House District 60 (Plaquemine): special election Feb. 7, 2026

House District 97 (New Orleans): special election Feb. 7, 2026

House District 100 (New Orleans): special election Feb. 7, 2026

Special election scheduled for March 14, 2026, with a potential April 18, 2026, general/runoff:

House District 69 (Baton Rouge): special election Mar. 14, 2026

As always, we encourage you to actively participate in local elections and be a resource on engineering for your local lawmakers when they have questions on any subject you can help them with.



Ryan Haynie and Randy Haynie
Haynie and Associates

LES

Since 1980, Haynie & Associates has been a leader in Louisiana lobbying and government relations. With proven skills, established credibility, and unfailing integrity, we consistently deliver success for our clients.

Randy Haynie
President
randy@haynie.com

Ryan Haynie
Vice-President
ryan@haynie.com

Haynie & Associates
P.O. Box 44032
Baton Rouge, LA 70804

2026 HONORS & AWARDS

RECIPIENTS

Hagan H. Lawrence, PE

F. Hugh Coughlin Young Engineer Award



Mr. Lawrence began his career in 2015 after graduating from LSU with a Bachelor's Degree in Civil Engineering. He joined the Lazenby & Associates, Inc. team in 2017 and has since worked on a variety of Civil Engineering projects. His experience includes all aspects of highway design, construction engineering and inspection, stormwater drainage systems, levee rehabilitation, as well as the design of sanitary sewer and potable water systems. In 2022, Mr. Lawrence became a partner at Lazenby & Associates, Inc. As a Project Engineer at the firm,

Hagan is responsible for seeing projects from design all the way through construction until the job is complete. Hagan helps manage the CE&I group at Lazenby & Associates. Hagan enjoys working with local municipalities in figuring out how to stretch their dollars the furthest in maintaining their road systems. Construction Engineering and Inspection is his favorite aspect of his day to day work.

Mr. Lawrence is an active member of the Louisiana Engineering Society where he served as the Monroe Chapter President for two consecutive terms from 2020-2022. Mr. Lawrence is currently serving as a state director and in his final year of his two-year term. Mr. Lawrence is also a member of the American Society

of Civil Engineers, and the National Society of Professional Engineers. Since obtaining his Professional Engineering License in 2018, Mr. Lawrence has been actively pursuing his Professional Land Surveying License. Mr. Lawrence is also a 2018 graduate of the Monroe Chamber of Commerce sponsored Leadership Ouachita Program.

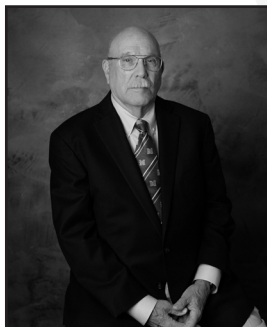
In his spare time, Hagan enjoys running his crawfish restaurant, Crawfish City in West Monroe, LA with his partners and wife. Hagan has been in the crawfish business for 10 years now. Hagan also enjoys LSU sports and loves to hunt and spend time outdoors with his family.

Hagan and his wife, McKenzie, have three girls, Gracie, Charlie, and Frankie, and a baby boy, Bradley, due this year. They are members of Christ Church and love to serve there in their spare time.

The Louisiana Engineering Society F. Hugh Coughlin Young Engineer Award Key and Certificate will be awarded as conditions warrant, but not more often than annually, to an engineer not over thirty-five (35) years of age who has demonstrated a high degree of capabilities in his chosen field of engineering, thereby indicating the potential for further advancement and leadership as a professional engineer. The desire of the Society is not only to recognize the recipient but to encourage and inspire young engineers with a desire to reach greater heights of professional achievement and service. This award is named in honor of F. Hugh Coughlin, P.E., a distinguished member of the Society from 1944 until his death in 1980. His interest in and support of young engineers was instrumental in the establishment of this award.

Theodore Thompson, PE, F.NSPE

Lifetime Achievement Award



LTC Theodore H. 'Ted' Thompson (ret) P.E., F.NSPE began his engineering career over fifty years ago in the US Army Field Artillery where he put his engineering knowledge to use by surveying artillery firing positions in combat. He says the reality of this surveying emphasized "to safeguard life...", which was his true introduction to Louisiana's engineering laws and rules. Following his active-duty service, he worked for F. Miller & Sons, Inc., a major Louisiana General Contractor.

He started as an entry level field engineer and worked his way up from estimator, project manager to the head of the company. Upon his retirement, he continued working part-time, as an engineer for Guinn Construction, LLC in Jennings, LA. As a second job, he continues to teach civil engineering courses at McNeese. He has taught continuously since 2000.

LTC Thompson started his engineering education in California; but he devoted more time to extra-curricular activities, than the classroom. He got serious about education after marrying a young Louisiana woman and earned his Bachelor of Science in Civil Engineering degree and Master of Engineering from McNeese State University.

Ted has served his community as a Deputy Sheriff, our state as a member of the Louisiana Army National Guard, and our country as an active duty and Reserve Army officer. He has served our profession for over fifty years as a member of the Louisiana

Engineering Society, NSPE, and the National Council of Examiners for Engineering & Surveying (NCEES). He was the Lake Charles Chapter president five times and a member of several LES committees both at the chapter and state level. Ted was LES President in 1999-2000. He served on the Louisiana Professional Engineering and Land Surveying Board (LAPELS) from 2010-16, the last year as Chairman. He has been a committee member of the NCEES Exams for Professional Engineers Committee and for the past fourteen years a committee member of the NCEES FE Exam committee.

Ted was married to Martha for fifty-three years until she passed away in 2020 from cancer. They have one daughter and two granddaughters. He is a member of Maplewood First Baptist Church, in Sulphur, LA.

A Lifetime Achievement Award may be made to a nominee who has made significant contributions to the advancement of engineering and the objectives of the Society throughout his or her career. The nominee shall have acknowledged eminence in engineering or related sciences, and nominees shall be chosen only from members of the Society.

2026 HONORS & AWARDS

RECIPIENTS

Floyd E. Mildford, III, PE

Andrew M. Lockett Medal for Civic Activities



On January 1, 2012, Gene III became President and CEO of Milford & Associates, Inc., a Houma based firm providing civil engineering and consulting services mostly to the private sector.

Gene III graduated from Louisiana Tech University in 1998 with a B.S. degree in Civil Engineering. While at Tech, he was a member of the Karate team and an officer in the student chapter of the American Society of Civil Engineers.

From 1989 to 1992, he served in the United States Army as a Combat

Engineer with the 18th Airborne Corps., deployed to the Middle East for Operation Desert Shield and Operation Desert Storm. Two non-combat engineering projects Gene served were the construction of a functional airbase in California; construction time was 36-hours, and the construction of a reinforced concrete building in St. Lucia.

Gene is a past President, Secretary and Treasurer of the Bayou Chapter of the Louisiana Engineering Society. Gene III is also a past Board Member of the Louisiana Engineering Foundation (LEF) and is a member of the National Society of Professional Engineers.

Serving his local community, Gene is a trained C.E.R.T. (Community Emergency Response Team) member through

the Dept. of Homeland Security Emergency Preparedness for Terrebonne Parish serving as a Team Leader since 2016. Gene serves more broadly as a general licensed Ham radio operator and member of the ARRL Region 3 ARES (American Radio Relay League, Amateur Radio Emergency Service).

For twenty years, Gene III was actively involved with the Boy Scouts of America as an adult leader in the Bayou District of the Southeast Louisiana Council. He served as a unit commissioner, district trainer, and district committee with various event assignments. At pack and troop unit levels, he has served on committees both as a member and chairman and direct contact leadership roles including being scoutmaster. Gene is a Silver Beaver and District Award of Merit recipient. Gene has served troop guide, ASM and SPL for several Woodbadge courses and as course director for NYLT (National Youth Leadership Training).

The Louisiana Engineering Society Civic Activities Award, The Andrew M. Lockett Medal, will be awarded as conditions warrant, but not more often than annually, for Distinguished Civic Service by an Engineer, in the interest of the Public, without compensation for those services. The character and scope of the services rendered are the predominant criteria, rather than strictly engineering or scientific attainments. The desire of the Society is not only to recognize the recipient but to encourage and inspire other engineers to take a greater part in the civic well-being of their communities, parishes, and the State of Louisiana. The award is named in honor of Andrew M. Lockett, P.E. a distinguished member of the Society from 1900 until his death in 1945. Mr. Lockett was a strong advocate for engineers to get involved in civic activities.

LES

Kalyn Partin, PE

Waldemar S. Nelson President's Award



Kalyn Partin, PE is a Client Program Manager/Engineer IV and the Lake Charles Office Lead for GIS Engineering, LLC. She earned a Bachelor of Science in Engineering with a civil concentration and a minor in mathematics from McNeese State University, and a Master of Science in Engineering and Technology Management from Louisiana Tech University, where she also earned a Six Sigma Green Belt certification. Kalyn spent the majority of her engineering career with the Louisiana Department

of Transportation and Development (LADOTD) District 07 before transitioning to the private sector in August 2023.

Kalyn has been an active member of the Louisiana Engineering Society (LES) since 2014. She currently serves as LES Lake Charles President, a role she has held since 2021, and has also served as the LES State Membership Chair for the past two years. Her prior LES leadership roles include Chapter Treasurer/Secretary and 2nd Vice President, and she has served as the regional MathCounts Coordinator for more than ten years.

Kalyn serves as an appointed Professional Engineer member of the Chenier Plain Coastal Restoration and Protection Authority Board representing Calcasieu Parish (March 2021-present) and is a graduate of the Leadership Southwest Louisiana Class of 2025. In 2024, she received the LES Outstanding President Award and was recognized by Thrive Magazine as a "Thriving 30-Something."

She is also actively involved in professional and community organizations including Life United Church, Fusion Five Young Professionals Organization, Krewe of the South, Moss Bluff Civic Club, and Moss Bluff Little League board.

Kalyn was born and raised in Lake Charles and currently resides in Moss Bluff, Louisiana. She is a proud wife of 10 years and a mother of four.

The Waldemar S. Nelson President's Award will be given as conditions warrant, but not more than annually, for distinguished service to the Louisiana Engineering Society by an engineer member of the Society, who has provided outstanding service to the Society, in an unselfish manner and in keeping with the highest professional standards. The desire of the Society is not only to recognize the recipient but to encourage and inspire others to take a greater part in the advancement of the Society and its service to mankind. This award is named in honor of Waldemar S. Nelson, P.E., a distinguished member of the Society from 1936 until his death in 2005. Unlike the other LES awards, the recipient of this award is not nominated and voted upon by the Honors and Awards Committee but is chosen at the discretion of the immediate Past-President of LES.

2026 HONORS & AWARDS

RECIPIENTS

Lee M. Alexander, PE, F. NSPE, F. ASCE

Leo M. Odom Award for Services to the Profession



Lee Alexander is a civil engineer whose career spans large-scale development, public service, professional leadership, and post-disaster recovery. He earned a Bachelor of Science in Civil Engineering from the University of Notre Dame and a Master of Science in Construction Management and Public Works Administration from Marquette University. Early in his career, he served as an officer in the U.S. Navy's Civil Engineer Corps, an experience that shaped his commitment to engineering ethics and public responsibility.

Lee later served as Vice President of EMJ Corporation in Chattanooga, Tennessee, where he oversaw the design and construction of eight regional shopping malls totaling more than one million square feet and fifteen strip shopping centers across eight states. He went on to found Alexander Engineering, a design-build firm responsible for car dealerships, industrial plants, and two resort developments in the U.S. Virgin Islands.

As an Owner's Representative, Lee managed the development, design, and construction of several landmark hospitality projects, including the Ritz-Carlton in Sarasota, Florida; the Ritz-Carlton in New Orleans, Louisiana; and the Tucker Point Club, now the Rosewood Hotel, in Bermuda. His expertise in this role led him to author a book published by the National Society of Professional Engineers advocating for the Owner's Representative model over traditional construction management approaches.

Following Hurricane Katrina, Lee served as Vice President of Daybrook Fisheries in Empire, Louisiana, overseeing approximately \$100 million in infrastructure for a world-class fish processing facility. He managed operations that included 12 spotter planes, 11 vessels, and the housing and feeding of more than 350 employees and their families for over a year. He continued overseeing operations with \$120 million in annual sales until the company was acquired by a South African firm.

Lee has lectured nationally on the value of Professional Engineers and has held numerous leadership roles, including Past President of his local American Society of Civil Engineers and Louisiana Engineering Society chapters, Past National Chairman of Professional Engineers in Construction for NSPE, and longtime service on the Southeast Louisiana Flood Protection Authority East and West Nominating Committee. He is a National Fellow Member of both ASCE and NSPE.

Now semi-retired, Lee enjoys traveling with his wife, Jennifer, and spending time with their grandchildren.

The Louisiana Engineering Society F. Hugh Coughlin Young Engineer Award Key and Certificate will be awarded as conditions warrant, but not more often than annually, to an engineer not over thirty-five (35) years of age who has demonstrated a high degree of capabilities in his chosen field of engineering, thereby indicating the potential for further advancement and leadership as a professional engineer. The desire of the Society is not only to recognize the recipient but to encourage and inspire young engineers with a desire to reach greater heights of professional achievement and service. This award is named in honor of F. Hugh Coughlin, P.E., a distinguished member of the Society from 1944 until his death in 1980. His interest in and support of young engineers was instrumental in the establishment of this award.

Eric R. Wright, PE

N. Dakota Hill Chapter President Award



Eric R. Wright, P.E. currently serves as the New Orleans Chapter President of LES. He graduated from Louisiana State University in 2020 with a Bachelor of Science in Civil Engineering and a minor in Structural Engineering. While at LSU, he was a member of the Steel Bridge team where the team was able to successfully design and fabricate a top 10 nationally ranked bridge in a competition of about 250 engineering schools. He has been working at Linfield, Hunter & Junius, Inc., for over 7

years where he has had the opportunity to work on a broad range of exciting structural projects.

Eric volunteers some of his time with ACE Mentors where he helps high school students pursue careers in architecture, engineering, and construction through mentoring and supporting their advancement into the industry. Additionally, he hopes to continue the work of previous chapter presidents and the NOLES board to create LES student chapters at both the University of New Orleans and Tulane University.

When asked about receiving this award, Eric said, "I am extremely humbled and honored to receive the N. Dakota Hill Outstanding Chapter President Award. I hope to be able to continue to demonstrate the values of service, leadership, and fellowship within the chapter, and I would like to say thank you to everyone in the New Orleans chapter for their continued support for the engineering community and profession. Serving on the board

these past few years and becoming chapter president has been an incredibly rewarding experience for me and I have enjoyed meeting and learning from everyone."

The N. Dakota Hill Outstanding Chapter President Award will be awarded as conditions warrant, but not more often than annually, to an LES member currently serving in the role of chapter president who has demonstrated, at a high level, the values of service, leadership, and fellowship within their chapter. This award is named in memory of N. Dakota Hill, 2022 – 2023 Monroe Chapter President, who left a legacy of service to the profession, to LES, and to his community, of leadership by example, and of creating fellowship within his chapter and beyond. The N. Dakota Hill Outstanding Chapter President Award will be determined by the current LES State President and the LES Office Staff. Recipients must be determined before January 15 annually and will be recognized at the annual LES Honors & Awards ceremony.

2026 HONORS & AWARDS

RECIPIENTS

Joan Schexnayder, PE

A. B. Paterson Award for Engineer in Management



Joan Schexnayder earned a BS in Civil Engineering from Louisiana Tech University in 1999 and has been employed with Terrebonne Parish Consolidated Government for 26 years. The majority of her career has been in the Engineering Division where she is currently a Staff Engineer. As the Staff Engineer she is responsible for reviewing subdivisions and building permits for compliance with parish regulations. She is also part of the team that manages capital projects for the Public Works Department.

In 2020 Joan was selected by the Louisiana Parish Engineers and Supervisors Association to represent Louisiana on the Board of Directors for the National Association of County Engineers (NACE).

The Louisiana Engineering Society Engineer-in-Management Award, The A. B. Paterson Medal, will be awarded as conditions warrant, but not more often than annually, for Distinguished Service in Management by an Engineer. The character and scope of the engineering's achievements in management rather than engineering or scientific attainments shall be the primary criteria for the selection of the recipient. The desire of the Society is not only to recognize the recipient but also to encourage and inspire other engineers to greater efforts in the field of Business Management. The award is named in honor of A. B. Paterson, PE an active member of the society from 1923 until his death in 1952. Mr. Paterson was an engineer, administrator, executive, banker, civic leader, and humanitarian.

LES

Mark E. Zappi, PhD, PE

LEF Engineering Faculty Professionalism Award



Dr. Mark E. Zappi, PE has over 25 years working with energy and/or waste management technologies ranging from basic research to full-scale commercialization. Dr. Zappi serves as the Executive Director of the Energy Institute of Louisiana at UL, Director of the UL Center for Environmental Protection, and the Director of the UL's Louisiana Energy Extension Service (one of the first in the US). He holds a BS in Civil Engineering from the University of Louisiana and a MS and PhD in Chemical Engineering from

Mississippi State University. He is a chaired professor of chemical engineering on the faculty of the UL College of Engineering. Dr. Zappi has over 250 technical publications (H-Index = 45 & >7,500 Citations), delivered over 400 technical presentations, holds six patents, and is a professional engineer within the State of Louisiana. He has secured over \$150M in R&D funding and has managed numerous multi-million, multi-partner projects. Current projects include biorefinery development, carbon management, lithium capture from oilfield process waters, biofuels/bioproductions from forest residuals, carbon capture integrated with microalgae harvesting, green petroleum chemicals, blue and green hydrogen production, advanced oxidation for PFAS removal, producing value-added products from food/ag waste products, and energy technology policy. Dr. Zappi has been active with assisting municipal and government entities with recruiting, evaluating, and assisting new industries

into their regions along with helping industries commercialize technologies. He is considered an expert on energy systems design, development, and commercialization.

The objectives of the Louisiana Engineering Faculty Professionalism Award are to bring to the attention of all faculties those members who are licensed professional engineers at their university and to present registration in a positive light which should encourage faculty to work toward licensure and professionalism in the universities.

2026 HONORS & AWARDS RECIPIENTS

Jenna Necaise

Vincent A. Forte Graduate School Fellowship



Jenna Necaise is a second-year Ph.D. student in Biomedical Engineering at Tulane University from LaPlace, Louisiana. She earned her B.S. in Biomedical Engineering with a minor in Psychological & Brain Sciences from Washington University in St. Louis in 2024. As an undergraduate student, she conducted research in an MRI laboratory, developing computational tools to compare neuroimaging data across clinical sites for patients with multiple sclerosis.

At Washington University, Necaise demonstrated a strong commitment to teaching and mentorship. She served as a resident advisor and mentored

first-generation and limited-income engineering students. As a result, she received the Emerging Leader Award, recognizing exceptional impact as a first-time resident advisor. In the classroom, she tutored computer science and physics students and assistant taught an undergraduate engineering ethics course.

At Tulane, Necaise's doctoral research focuses on low-field MRI technologies to develop quantitative imaging biomarkers aimed at improving accessible and cost-effective diagnostics, particularly for rural and under-resourced healthcare settings. She has presented this research at international conferences, including an invited oral presentation, and is currently preparing a manuscript for publication. In addition to her research, she has assistant taught undergraduate courses related to Research and Professional Experience and electronics. She has also developed

and taught a STEM-focused course for high school students through Tulane University's summer programs.

Her academic achievements include presenting at the 2025 Society of Women Engineers National Conference on the intersection of biomedical imaging, coding, and visual art, receiving the Louisiana GRASS RFP Fellowship, and participating in Fish & Richardson's School of Fish program that supports STEM students interested in innovation and intellectual property law.

Beyond academia, Necaise is actively involved in Louisiana's civic and cultural life. She currently holds the title of 2025 Miss Alligator Festival Queen, an advocacy role connected to the St. Charles Parish Rotary Club, which raises \$50,000 annually in high school scholarships. Through this role, she supports student advocacy, community engagement, and STEM outreach, particularly encouraging young women to pursue advanced education in engineering.

Grounded in her small-town Louisiana roots, Necaise is committed to teaching, mentorship, and expanding equitable access to healthcare through engineering innovation.

The Vincent A. Forte Graduate School Fellowship is given annually to a student enrolled in a graduate education program in engineering who expresses a sincere desire to enter the teaching profession at the University level upon completion of his or her graduate education. The award is named to honor Vincent A. Forte, P.E., a founder and first president of the Louisiana Engineering Foundation.

CHAPTER UPDATES

Baton Rouge Chapter

Laurence Lambert, PE, PTOE, PTP

The Baton Rouge Chapter closed out 2025 with an engaging December luncheon at Juban's, where members heard from Rudy Simoneaux, who currently serves as the Chief of Engineering for the Louisiana Coastal Protection and Restoration Authority (CPRA). His presentation offered valuable insight into the state's ongoing coastal restoration and protection initiatives, setting an inspiring tone as we moved into the new year. In addition to the luncheon, the chapter continued its commitment to supporting local STEM education. All STEM grants for the 2025 year were successfully awarded to ten local schools, reinforcing our mission of fostering future generations of engineers through hands on educational opportunities.

As we began the first quarter of 2026, the chapter hosted its first luncheon of the year on January 22, 2026, at Drusilla Place, featuring guest speaker Paul Sawyer of the Amite River Basin Commission. February will bring one of our busiest and most meaningful annual events—the MathCounts regional competition—where middle school students from across the area will showcase their problem solving skills and mathematical talent. Later this month, on February 24, 2026, the chapter will celebrate Engineers Week with a special luncheon at Ruffino's, where we will proudly present our annual chapter awards and recognize outstanding contributions within our engineering community.

(Continued on next page)



Laurence Lambert, PE, PTOE, PTP
Baton Rouge Chapter President

CHAPTER UPDATES

Looking ahead to March, preparations are well underway for our annual Golf Tournament, scheduled for March 16, 2026, at Pelican Point. This event is always a highlight of the spring season, supporting chapter programs and providing a fun opportunity for networking and camaraderie among members, sponsors, and friends of the society. The Baton Rouge Chapter extends its appreciation to all members and volunteers whose continued engagement drives the success of our programs and events. We look forward to a productive and inspiring first quarter of 2026.

Bayou Chapter

Jacob Prosperie, PE

The Bayou Chapter had an excellent 2025. We held a very successful golf tournament in June, which provided the ability for the Bayou Chapter to increase its scholarship endowment. Our scholarship endowment will now fund two \$500 scholarships for the 26-27 school year. In November, our chapter had the pleasure of sponsoring the ethics presentation for Fletcher Community College's Annual Symposium for Continuing Education. Mr. Jeffrey. Pike, PE gave a very engaging presentation on ethics. We are excited to begin planning our annual golf tournament for 2026 and look forward to a productive 2026 year.

Our next scheduled chapter meetings will be held on Wednesday, February 11; Wednesday, March 18; and Wednesday, April 15. I look forward to seeing everyone at our meetings.



Jacob Prosperie, PE
Bayou Chapter President

Lafayette Chapter

Grant Besse, PE

Happy New Year from the Lafayette Chapter of LES. We had a good end to 2025 with an interesting luncheon topic presented by Mandi Mitchell, CEO of Lafayette Economic Development Authority, and a joint holiday social at Rock 'n Bowl Lafayette. Thank you to all our members for your support and engagement help keep this organization successful.

We are still seeking volunteers to fill two key positions on our board: 2nd Vice President and Secretary/Treasurer. These roles are vital to the continued success and growth of our chapter. If you or someone you know is interested in getting more involved, please don't hesitate to reach out. We'd love to have you on board.

We have been busy working with the ULL LES Student Chapter to organize an event in February and will be getting more information to the chapter soon. I'd like to continue to encourage all our members to get involved with these activities if you can so that we can help support the younger generation of engineers.

With Mathcounts and JESC right around the corner, spring is looking to be a busy season. Our March and April luncheons have been set; be on the lookout for save-the-dates to get those on your calendars.

Thank you for your continued commitment to LES and to the engineering profession. I look forward to working with all of you in 2026!



Grant Besse, PE
Lafayette Chapter President

CHAPTER UPDATES

Lake Charles Chapter

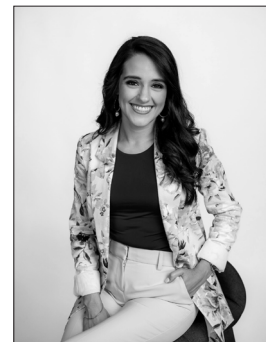
Kalyn Partin, PE

The Lake Charles Chapter of the Louisiana Engineering Society was excited to kick off the new year by resuming our monthly meetings in January after a brief break in November and December. We hope everyone enjoyed a happy and restful holiday season, and we're looking forward to a productive and engaging year ahead. As a reminder, chapter meetings will continue to be held on the third Thursday of each month, and we encourage members to mark their calendars and join us when possible.

Our January meeting featured a presentation from Gainey's Concrete, who also generously sponsored lunch for the meeting. We greatly appreciate their support and willingness to partner with our chapter, helping us start the year off strong. Looking ahead, we are moving full steam into planning for MATHCOUNTS, which will be hosted at McNeese State University on February 21. This event is always a highlight for our chapter, and we are currently seeking swag items for participating students as well as sponsors willing to help cover costs such as t-shirts, lunch, awards, and other event needs. Any support is greatly appreciated and helps make this program a success for the next generation of STEM students. We also hope to see many of our members at JESC, and we encourage everyone to take advantage of this opportunity to connect with colleagues across the state.

Finally, congratulations are in order for our own Theodore (Ted) Thompson, who was recently named the recipient of the Lifetime Achievement Award. This is a well-deserved honor, and we look forward to supporting Ted in Baton Rouge at the Honors and Awards Ceremony on March 14 as we celebrate his outstanding contributions to the profession.

Thank you to our members and partners for your continued engagement and support as we move into another busy and rewarding year.



Kalyn Partin, PE
Lake Charles Chapter President

Monroe Chapter

Noah Sampognaro, PE, LSI

I hope everyone has had a chance to get back into the groove after the holidays. It always takes a minute to shift from holiday mode back into project deadlines, but our Monroe Chapter has hit the ground running in 2026.

We wrapped up 2025 with our December meeting, where we had the pleasure of hosting LAPELS Board Member Reggie Jeter, P.E. Reggie gave an informative presentation on Engineering Ethics, covering key sections of the LAPELS Laws and Rules along with real-world scenarios many of us encounter throughout our careers. He also walked us through several serious engineering failures that most of us remember from the news headlines. It was a great reminder of the responsibility we all carry as licensed engineers.

We kicked off 2026 with a bit of a field trip, holding our January meeting at Infrastructure Consulting & Engineering's new Monroe Office and Lab. For many of us, it was a walk down memory lane to our college days. We watched sieve analysis, hydrometer testing, and Atterberg limits being defined; some were reliving their glory days, while others may have had flashbacks to soils lab trauma. The facility is top-of-the-line and impressively laid out, from the large vent fans to the placement of the moisture-controlled cylinder curing room and secure nuclear density gauge storage. We're very grateful to the team at ICE for opening their doors and giving us a behind-the-scenes look at their new operation.



Noah Sampognaro, PE, LSI
Monroe Chapter President

(Continued on next page)

CHAPTER UPDATES

We have four more meetings scheduled this spring before we break for the summer, all held at our usual location at the Monroe Civic Center on the second Thursday of each month.

Our board is also busy planning our annual Skeet Shoot, which will be held this spring at Wild Wings Sportsman Club. We've narrowed the event down to a few dates and will have everything finalized soon. This event continues to be a great opportunity for engineers, contractors, and sponsors from across Northeast Louisiana to come together for some friendly competition and networking.

Thanks to the continued support of our sponsors and members, through both event participation and monthly newsletter ads, we've been able to endow an additional \$4,500 to each of our two Monroe Chapter Scholarships over the past two years. These scholarships, awarded through LEF, go to Louisiana Tech engineering students, and we're proud to help support the next generation of professionals.

This year's recipients were just announced: Landon Morreale, who will graduate in May with a degree in Electrical Engineering, and Jordan Crum, a junior in Mechanical Engineering. We're honored to have played a small part in their journey.

I look forward to seeing many of you at JESC later this spring and hope to continue the momentum through the rest of our chapter year.

LES

New Orleans Chapter

Eric R. Wright, PE

The New Orleans Chapter of LES hopes that everyone has had a great Christmas, New Years, and holiday season. We are looking forward to this year and already have several more exciting meetings planned.

In January we hosted our "Business, Industry, and Energy Outlook" panel discussion at the Metairie Country Club where local business leaders shared valuable insights on key topics that will impact Louisiana and specifically New Orleans businesses. These topics included AI data centers, Venezuela oil and its impact to Louisiana, President Trump and New Orleans Mayor Moreno's policies, tariffs, and nuclear energy. The panelists were Michael Hecht (the President & CEO of Greater New Orleans, Inc.), Professor Eric Smith (the Professor of Practice at the A.B. Freeman School of Business at Tulane University and the Associate Director of the Tulane Energy Institute), Deanna Rodriguez (President and CEO of Entergy New Orleans), and Jack Neelis (Senior Vice President and Senior Staff Engineer at Waldemar S. Nelson and Company, Inc.).

Our next meeting on February 25th will be a joint venture with the Society of Tulane Engineers. The Dean of Tulane's School of Science and Engineering will give a talk on recent developments in Artificial Intelligence and its future role in engineering. You can find information on all our upcoming events by going to our website at: <https://neworleanschapter.les-state.org/>

LES New Orleans is continuing our support for MATHCOUNTS New Orleans. Their annual competition will be held on Saturday, February 28th. If you are interested in donating or volunteering, go to [Mathcounts.org](https://mathcounts.org) for more information.

As always, we thank you for supporting your LES and our New Orleans Chapter!



Eric R. Wright, PE
New Orleans Chapter President

CHAPTER UPDATES

Shreveport Chapter

Luke Haney, PE

The LES Shreveport Chapter wrapped up 2025 on a strong note by hosting a joint Christmas Social with local ASCE and IEEE chapters. Members and sponsors gathered at Chasing Aces for food, drinks, and friendly competition. Sponsors QSM and Utiliserve provided appetizers and drinks and helped make the event a success.

The chapter's 2026 schedule kicks off with monthly meetings beginning on February 11th, featuring a presentation from the North Louisiana Economic Partnership. March will bring our annual Ethics Luncheon, presented by Mr. Jeffrey A. Pike, PE. Our year will wrap up with meetings in April and May. Members are encouraged to watch for upcoming newsletters for event details and registration information.

The chapter also hosted the MATHCOUNTS competition on January 31, 2026, at LSU Shreveport. Participation was strong, and the event would not have been possible without our volunteers. Thank you to everyone who contributed their time and support.

We look forward to building on this momentum in the year ahead. Join us at an upcoming luncheon and stay engaged with the local engineering community.



Luke Haney, PE
Shreveport Chapter President



Shreveport Chapter Christmas Social

PLEASE JOIN US!

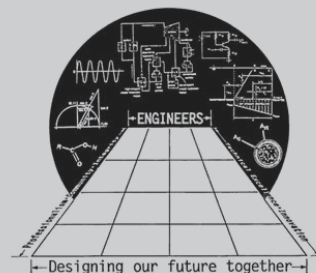
30th Annual

Joint Engineering Societies Conference

March 4-5, 2026

At the Cajundome

Lafayette, LA



VISIT

WWW.LES-STATE.ORG

TO REGISTER!

PLEASE CONSIDER A MATHCOUNTS DONATION TO LES!

The MATHCOUNTS program offers hundreds of junior high students a two-part workout to strengthen their numerical know-how and polish their polynomial pride. MATHCOUNTS, a nationwide math coaching competition program, encourages and prepares students to pursue mathematics in high school and beyond by making the subject as fun and exciting as a school sports event.

The MATHCOUNTS program starts in September with the free distribution of MATHCOUNTS "coaching" materials to math teachers nationwide. Materials focus on problem-solving, analytical thinking, exploration, and teamwork. Next, throughout the fall teachers use the prepared "warmups" and "workouts" as supplement classroom material or as an extracurricular activity to spark seventh and eighth graders' interest and achievement in math.

MATHCOUNTS really gets underway in February with local competitions around the state. Winning teams and individuals then progress to the State-level competition held in March. The top students from the state-level competition will finally progress to the national-level competition in May.

The MATHCOUNTS Foundation expects 350,000 students to take part in MATHCOUNTS this year. Since the program began in 1983, over three million students have participated in MATHCOUNTS coaching and competition.

Today's children need every opportunity to achieve in math to succeed in the new economy. MATHCOUNTS not only engages students in creative approaches to learning mathematics but also **helps to create tomorrow's problem-solvers in all areas of society. Help make MATHCOUNTS available to more students in this new school year! Please consider contributing to this worthy program. Remember, contributions are tax deductible.**

For more information about MATHCOUNTS or to obtain a free school coaching kit, contact Mary Claire Ruckert at the Louisiana Engineering Society at (225) 924-2021 or maryclaire@les-state.org.

2026 Competition Dates

Chapter: February 1 – 28, 2026

State: March 27, 2026

National: May 10 – 11, 2026

2025 MATHCOUNTS Sponsors

THE UNDERWRITER:

Louisiana Engineering Society

THE STATE SPONSOR:

Cleco

THE SPONSORS:

Forte and Tablada, Inc.

Lazenby & Associates

Neel-Schaffer

THE CONTRIBUTORS:

Meyer & Associates

Mohr and Associates, Inc. Morgan

Goudeau & Associates, Inc.

Sellers & Associates, Inc.

Infinity Engineering Consultants

THE SUPPORTERS:

Ardaman & Associates, Inc.

E3 Electrical, Inc.

M & E Consulting

MATHCOUNTS®

WHERE YOU'RE ON A WINNING TEAM

Gift/Pledge Form

You know that you're on a winning team with MATHCOUNTS! You may have supported us in the past years. If, so, we want to say "THANKS" in a big way! Our fundraising campaign for 2026 is getting underway, and we hope that you will support us this year. Please select a team position from below and mail the bottom half of this form and a check by December 31, 2025. MATHCOUNTS is an education program of LESEF, Inc. LESEF, Inc. is a nonprofit tax-exempt 501 (c) (3) corporation. Your contribution is tax-deductible, and you will receive an acknowledgment.

Select a Team Position:

- | | |
|--|--|
| <input type="checkbox"/> The Underwriter (\$5,000) | <input type="checkbox"/> The Sponsor (\$500) |
| <input type="checkbox"/> The Major Sponsor (\$2,000) | <input type="checkbox"/> The Contributor (\$250) |
| <input type="checkbox"/> The State Sponsor (\$1,000) | <input type="checkbox"/> A Supporter (\$150) |

☐ Check enclosed for \$ _____ (Make checks payable to: LEF-State Mathcounts)

☐ I will make my donation online (scan QR Code for link):



Mail checks to: Mary Claire Ruckert, State Coordinator
Louisiana Engineering Society-State Mathcounts
1800 City Farm Drive, Bldg. 5B, Baton Rouge, LA 70806
225-924-2021 | maryclaire@les-state.org

Company Name: _____

Contact Person: _____

Email Address: _____

Thank You! We appreciate your support!

LES

FOOTSTEPS IN HISTORY

Reprinted from *Louisiana Engineer* magazine,

August 1974

Spanning Lake Ponchartrain at its widest point and over its deepest water, a steel and concrete structure curves out of sight over the horizon. The Ponchartrain Causeway, a 23.8 mile engineering marvel and the longest highway bridge ever built, seems to stretch to the end of the world. Unique construction makes it one of Louisiana's great landmarks.

Since 1830, when Bernard Xavier de Marigny de Mandeville founded his estate on the lake's far shore, New Orleanians had dreamed of a bridge to his northern piney woods. Because the ground is higher there, the temperature is always 10 degrees cooler, and for over 100 years New Orleans families ferried across each summer to escape the sweltering heat of the city.

Cool Ponchartrain breezes and the sweet scent of pine needles weren't the only attractions of the north shore. Hemmed in on one side by the lake and on another by the Mississippi River, New Orleans had little room for expansion. A bridge across Ponchartrain had long been recognized as a way to bring new areas of undeveloped land within easy driving distance, giving the Crescent City a direction in which to grow.

With this incentive, why did it take so long for the Causeway idea to become a reality? The answer was simple – cost. A bridge of such great length had never been attempted because conventional building methods were impossibly expensive. In fact, the enterprise seemed so great in magnitude that most New Orleanians called it “just a dream.” But some of them took the proposal seriously. A Causeway Commission was appointed, and they in turn contracted the engineering firm of Palmer and Baker, Inc. to study the problem.

The engineers searched for a way to build the bridge at a reasonable cost. Finally, they conceived a design that would permit the contractor to use mass production methods. The bridge would be constructed in sections on shore, ferried across the water and placed in position.

First, huge dredges dug a long canal through a 40-acre cypress swamp near the bridge site. Spewing excavated dirt as they worked, the dredges raised the level of the land nearly seven feet to offer a sturdy foundation for a plant to manufacture the road sections. On the water, floating pile drivers began smashing concrete pilings down into Lake Ponchartrain's soft bottom. Later, giant crane barges followed, lifting the 185-ton concrete sections into place – 2240 of them, one by one.

On August 4, 1956, less than 15 months after the first pile was driven, the last section of roadway was moved into position. Experts had criticized the mass production design, claiming the method would take too long. But the \$46 million span was completed four months ahead of schedule, and before it was finished, thousands of engineers had come to marvel at the great feat of engineering skill.

Man's ingenuity had overcome the obstacles that nature had placed before him. Determination and unbreakable confidence had produced a world-famous landmark, and made a 125-year-old dream come true.

THANK YOU TO OUR SPONSORS!

Platinum Sponsors



Gold Sponsors

ERGON

Asphalt & Emulsions



LET'S BUILD TOGETHER.

You create the plans to make visions a reality.
We provide blueprints for the custom insurance coverage that's right for you. Understanding your unique risks, we'll design a tailored, strategic solution to meet your needs. It's what we've been doing for 140+ years.

CadenceInsurance.com

CADENCE
Insurance
A Gallagher Company

© 2024 Arthur J. Gallagher & Co. | GGBUS46101



ENVIRONMENTAL TECHNICAL SALES, LLC

Manufacturer's Representative For

WASTEWATER TREATMENT
WATER TREATMENT
SOLIDS HANDLING
STORM WATER

WATER METERS - FUNDING AVAILABLE

Municipal & Industrial Markets:

LOUISIANA
MISSISSIPPI
ARKANSAS
WESTERN TENNESSEE

In-Depth Knowledge & Years of Experience With

AERATION / MIXING
CLARIFICATION
CHEMICAL DISINFECTION
ULTRA-VIOLET (UV) DISINFECTION
FILTRATION
HEADWORKS
ODOR CONTROL
STORM WATER PUMPING
WATER METERING
AND SO MUCH MORE!

New Plant Equipment Plant Improvements

Plant Rehabs

Equipment Retrofits

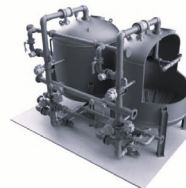
Pump Stations

Parts / Repairs

Water Metering Services

Service For New & Existing Equipment

START UP SERVICES
SERVICE CONTRACTS
PREVENTIVE MAINTENANCE SERVICE
ASSESSMENT SERVICE
REPAIR SERVICE



7731 Office Park Blvd.
Baton Rouge, LA 70809
800-251-1047
www.etc-sales.com



Daniel Hebert, President
Brady Sessums, Vice President
Abigail Ally, Parts & Service
Joseph Hebert, Sales
John Daniel Hebert, Sales
Christian Primeaux, Water Meter Sales
Chad Robinson, Water Meter Sales
Ronnie Hebert, Chairman

Picture your
business
card HERE!



Picture your
business
card HERE!



ASCE All South
Consulting
Engineers
Solutions Engineered By Design
■ Civil Engineering ■ Surveying ■ Program Management ■
■ Construction Management ■ Disaster Management ■

BONTON ASSOCIATES
232 Third Street, Suite 100
Baton Rouge, LA 70801
Phone: 225-706-0975
Fax: 225-209-1180
Darius Bonton, PE, MBA
Principal Engineer
225.588.3843
darius@bontonassociates.com
www.bontonassociates.com

CASE INTERNATIONAL
• ENGINEERING
• PROJECT MANAGEMENT
• CONSTRUCTION ADMINISTRATION
Office: 337-232-3336
P.O. Box 4825
Lafayette, Louisiana 70502
www.casengr.com

CSRS
BUILDING STRONGER,
SMARTER COMMUNITIES
TOGETHER.
csrsinc.com
8585 United Plaza Blvd., Baton Rouge, LA 70809 (833) 523-2526
D. WALTER JESSEN, JR.
P.E., P.L.S.
DWJ D. W. Jessen & Associates, L.L.C.
Civil and Consulting Engineers Lake Charles, Louisiana
Phone: (337) 439-0361 440 Kirby Street
Fax: (337) 439-5842 Lake Charles, LA
dwj@dwwjessen.com 70601-5289

ANGELETTE DESIGN
Consulting Engineers & Surveyors
Neil B. Angelette, P.E., P.L.S.
Principal
13379 Highway 3235
Larose, LA 70373
neil@angelette.com
(985) 798-7700

BH BUCHART HORN
ENGINEERS ARCHITECTS PLANNERS
18163 East Petroleum Drive Suite A
Baton Rouge, LA 70809-6104 (225) 755-2120
527 West Esplanade Ave. Suite 302
Kenner, LA 70065-2568 (504) 405-3936
bucharthorn.com

C. J. SAVOIE
CONSULTING ENGINEERS, INC. ENGINEERS DESIGNERS PLANNERS
C.J. SAVOIE, P.E.
CIVIL ENGINEER
P.O. DRAWER R PAINCOURTVILLE 70391 PAINCOURTVILLE 985/369-2341
FAX # 985/369-7735
e-mail: cjs@csavoie.com

DE Dedicated Engineering for a Better Community.
TRANSPORTATION
WATER RESOURCES
digital engineering
www.deii.net

Ardaman & Associates, Inc.
GEOTECHNICAL ENGINEERS
Baton Rouge: (225) 752-4790
New Orleans: (504) 835-2593
Shreveport: (318) 636-3673
ARDAMAN.COM

BKI
BURK-KLEINPETER, INC.
ENGINEERING PLANNING ENVIRONMENTAL
KENNER, LA
504-486-5901
www.bkiusa.com

COYLE ENGINEERING CO., INC.
Civil Engineering • Land Surveying
P.O. Box 6177 3925 Benton Road
Bossier City, LA 71171-6177 Bossier City, LA 71111
Phone: (318) 746-8987 Fax: (318) 742-1018
www.coyle.pro

DIS-TRAN
PACKAGED SUBSTATIONS
www.distransubstations.com
318.448.0274

BALAR
CONSULTING ENGINEERS
BALAR ASSOCIATES, INC.
631 MILAN STREET, SUITE 300 SHREVEPORT, LOUISIANA 71101
Phone: 318-221-8312 Fax: 318-424-6508
E-MAIL: balar@balar-engineers.com WEB: www.balar-engineers.com

BRAMMER
ENGINEERING, INC.
401 Edwards Street, Suite 1510
Shreveport, LA 71101
318.429.2345 • www.brammer.com

CRESCENT
ENGINEERING & MAPPING, LLC
Dennis M. Hymel, Jr., P.E.*
President | Engineering Manager
P.O. Box 370 Vacherie, LA 70090 www.crescentenglo.com
Cell: 225-413-4979
Mobi: 225-329-1742
dennis.hymel@crescentenglo.com

DOMINGUE SZABO
& ASSOCIATES, INCORPORATED
PROFESSIONAL ENGINEERS & LAND SURVEYORS
102 Asma Boulevard Suite 305
Lafayette, LA 70508
(337) 232-5182
www.dsaengineering.com

**SERVING CLIENTS
ACROSS THE GULF SOUTH
FOR OVER 25 YEARS!**

DDG
BROAD VISION. EXPERT FOCUS.

COVINGTON THIBODAUX BATON ROUGE LAFAYETTE NEW ORLEANS HOUSTON MOBILE

DDGPC.COM | 985.248.6180

Picture your
business
card HERE!

**LOUISIANA
ENGINEERING SOCIETY**

**LANIER & ASSOCIATES
CONSULTING ENGINEERS, INC.**
Excellence By Design... Since 1974

JOHN RUTHERFORD

jrutherford@lanier-engineers.com
office: 504-895-0368
cell: 504-810-2289

4101 Magazine Street
New Orleans, LA 70115
www.lanier-engineers.com

MODJESKI—MASTERS

**FULL-SERVICE
BRIDGE ENGINEERING.**

1100 Poydras Street, Suite 900
New Orleans, LA 70163
neworleans@modjeski.com

504-524-4344 | www.modjeski.com

ELOS

Where Natural Environments
& Human Interests Intersect

Jay Prather
Vice President /
Environmental Scientist
jprather@elosenv.com

607 W. Morris Avenue
Hammond, LA 70403
985.662.5501

Managed IT • Managed Cybersecurity
Business Continuity • Disaster Recovery

**GULF SOUTH
TECHNOLOGY SOLUTIONS**

25+ Years of Serving Engineering Firms across Louisiana!
sales@gulfsouthtech.com | 225.216.2169

LAZENBY & ASSOCIATES, INC.
CONSULTING ENGINEERS & LAND SURVEYORS
200 NORTH 75 STREET
WEST MONROE, LOUISIANA
318-387-2718

Mohr and Associates, Inc.
Consulting Civil Engineers & Land Surveyors

1324 N. Hearne Avenue - Suite 301
Shreveport, Louisiana 71107-6529
Telephone: 318/686-7190
FAX: 318/402-4400 • Cell: 318/947-9235
E-mail: acraig@mohrandassoc.com

J. ANDREW CRAIG
Professional Engineer
(LA, AR, TX)
Professional Land Surveyor (LA)

**E3 ELECTRICAL
CONTRACTING / ENGINEERING**

POWER • AUTOMATION • CONTROL
COMMERCIAL • INDUSTRIAL • MARINE • PANELS
(985) 223-0778

2746 Hwy. 384
Bell City, LA 70630

Lonnie G. Harper & Associates, Inc.
CIVIL ENGINEERING AND LAND SURVEYING CONSULTANTS

email: harper@harper-group.com Ph: 337.905.1079
www.harper-group.com Fax: 337.905.1076

2697 Grand Chenier Hwy.
Grand Chenier, LA 70643

LEVINGSTON

FULL SERVICE ENGINEERING

Civil-Structural-Piping-Mechanical-Process
Electrical-Instrumentation-Automation-Controls

FEI Engineering Construction Execution PSM Services
FEA/Simulation Planning/Scheduling
In-Plant Staffing Services

210 Teal Road, Sulphur, Louisiana 70665
www.levingston.com

McA
Morgan Goudeau & Associates

CIVIL ENGINEERS - LAND SURVEYORS

1703 WEST LANDRY STREET
ORLEANS, LA 70079
(337) 948-4222

ESI Supply
Environmental • Safety • Industrial

Robert J. Craft, R.P.G.
Cell: 601-500-0060

ESI Supply, LLC
P.O. Box 180759, Richland, MS 39218
111 Aero Smith Drive, Richland, MS 39218
Phone: 601-933-4910 • Fax: 601-988-1282
rcraft@esisupply.net
www.esisupply.net

HELICAL CONCEPTS, INC.

DISTRIBUTOR
CHANCE CIVIL CONSTRUCTION

Josh Lindberg

P.O. Box 1238
710 Cooper Dr.
Wylie, Texas 75098
www.helicalpier.com

(972) 442-4493 ofc
(214) 803-0207 cell
josh@helicalpier.com

LOURIE CONSULTANTS

geotechnical and geoenvironmental
engineering and consulting services

...quality measured in the client's terms since 1992

3924 Haddon Street
Metairie, Louisiana 70002-3011
Tel: (504) 456-0066; Fax: (504) 324-0347
Internet: www.lourieconsultants.com
E-mail: Leon.L@lcaol.com

Picture your
business
card HERE!

**LOUISIANA
ENGINEERING SOCIETY**

75 YEARS
1946 2021

EUSTIS ENGINEERING L.L.C.
LOUISIANA TEXAS MISSISSIPPI

GEOTECHNICAL ENGINEERING
CONSTRUCTION MATERIALS TESTING

**HUVAL
& ASSOCIATES, INC.**
Consulting Engineers

922 W. Pont Des Mouton Rd.
Lafayette, LA 70507
www.huvalassoc.com

337-234-3798 Office
337-234-2475 Fax

M&E CONSULTING

1304 BERTRAND DRIVE
SUITE F7
LAFAYETTE, LA 70506

OFFICE | 337 234 7474
FAX | 337 234 7774

Manish Mardia, P.E.
President

cell: 504-559-1897 mmardia@msmmeng.com
office: 504-570-6098 www.msmmeng.com

MSMM ENGINEERING, LLC
Louisiana • Texas • Mississippi

EVANS-GRAVES ENGINEERS, INC.
Since 1954

9029 Jefferson Hwy.
Suite 200
Baton Rouge, LA 70809
P: (225) 926-1620
F: (225) 928-9375
www.evans-graves.com

909 Poydras St.
Suite 3050
New Orleans, LA 70112
P: (504) 836-8190
F: (504) 836-8199

ILD

Jack R. Little
President

7353 Highland Road, Ste. B-378
Baton Rouge, LA 70808
Phone: (225) 769-2780, x111
Fax: (225) 769-2751
Cell: (225) 933-9843
jack@ildpower.com

**MCINTIRE MANAGEMENT GROUP
D & W SYSTEMS SALES**

Andy Brown

Cell: (601) 317-0340
Office: (601) 924-5522
Fax: (601) 500-5258

1331 Cynthia Road
Clinton, MS 39056
andy@mmgonline.net

NEEL-SCHAFER
Solutions you can build upon

Engineers | Planners | Surveyors | Environmental Scientists | Landscape Architects

FIVE LOUISIANA LOCATIONS

BATON ROUGE 225-924-0235 LAFAYETTE 337-232-6111 MANDEVILLE 985-674-9820
NEW ORLEANS 504-875-4662 SHREVEPORT 318-221-7117

www.neel-schaffer.com

FORTE & TABLADA

Consulting Engineers/
Land Surveyors
www.ForteandTablada.com

9107 Interline Avenue
Baton Rouge, LA 70809

225.927.9321
225.927.9326

Infinity Engineering Consultants, LLC

∞ Civil
∞ Structural
∞ Mechanical
∞ Electrical
∞ Marine

504-304-0548 | phone
504-355-0265 | fax
www.infinityec.com

4001 Division Street
Metairie, LA 70002
info@infinityec.com

Building a better tomorrow... today!

MCKIM & CREED GSA

www.gsaengineers.com

BATON ROUGE, LA 225.389.6000
GONZALES, LA 225.644.5523
SLIDELL, LA 985.639.9000

Civil, Environmental, Transportation, Construction Management, Planning Services

NY ASSOCIATES, INC.
ENGINEERS • ARCHITECTS • PLANNERS
PROGRAM & PROJECT MANAGERS
"Since 1969"

(504) 885-0500
info@n-yassociates.com
www.n-yassociates.com

2750 Lake Villa Drive | Metairie, LA 70002

gaineys

GREG ROACHE
PRESIDENT

28021 COKER-VAIL RD
HOLDEN, LA 70744

CELL: (985) 969-3722
PH: (225) 567-2700
FAX: (225) 567-3089

WWW.GAINEYCONCRETE.COM
GREG@GAINEYCONCRETE.COM

IFS INNOVATIVE FLOW SOLUTIONS, INC.

400 Mariners Plaza Blvd., Ste. 420
Mandeville, LA 70448
www.ifsproducts.com

Office: 985.626.5143
Cell: 985.320.3849
Fax: 985.626.5145

GLENN MESMAN
glenn@ifsproducts.com

Meyer & Associates, Inc.
Consulting Engineers

600 N. Cities Service Hwy.
Sulphur, Louisiana 70663

(337) 623-8333 Fax: (337) 623-8433
www.meyerassociates.com

**THOMAS C. DAVID, JR.
P.E., P.L.S.**

PAN AMERICAN ENGINEERS, LLC

1717 JACKSON STREET
P.O. Box 8599
ALEXANDRIA, LA 71306

TEL: 318.473.2100
FAX: 318.473.2275
Email: tom@paealex.com

GeoEngineers

We're down to earth.

GeoEngineers is an engineering and earth science consulting firm where substance matters. Learn more at www.geoengineers.com

Picture your
business
card HERE!

**LOUISIANA
ENGINEERING SOCIETY**

mmlh
Meyer, Meyer, LaCroix & Hixson
Engineers and Land Surveyors

Alexandria Ph: (318) 448-0888
Ruston Ph: (318) 255-7236
www.mmlh.com

PICCIOLA & ASSOCIATES, INC.
CIVIL ENGINEERS
LAND SURVEYORS
NAVAL ARCHITECTS
MARINE ENGINEERS

Joseph C. Picciola, II, P.E., P.L.S.

P.O. Box 687
115 Picciola Parkway
Picciola Complex
Cut Off, Louisiana 70345
www.picciola.com

Phone: (985) 632-5786
Fax: (985) 632-2407
joe@picciola.com

GT3 ENGINEERING, LLC

3200+ DEDICATED EMPLOYEES
20+ SERVICE LINES
20+ OFFICE LOCATIONS

CONTACT US TODAY:
proposals@gt3.com www.gt3.com

PUTTING PEOPLE FIRST SINCE 1948

Keystone ENGINEERING, INC.
WWW.KEYSTONEENGR.COM

Houston 281.493.5222 Lafayette 337.254.3600 Baton Rouge 225.360.3000
Mandeville 985.377.1030 Metairie 504.362.9465

ENGINEERING • PROJECT MGMT. • CONTROLS/AUTOMATION • DESIGN • PROJECT CONTROLS

Michael Baker INTERNATIONAL
We Make a Difference

2600 CitPlace Dr., Suite 450, Baton Rouge, LA 70808
225.706.0744 | cbuggar@mbakerintl.com

MBAKERINTL.COM

PRINCIPAL Engineering
Architecture • Engineering • Construction

128 Northpark Blvd.
Covington, LA 70433

Office: (985) 624-5001
Email: info@pt-aec.com

<p>Professional Engineering Consultants Corporation 7600 Innovation Park Drive Baton Rouge, LA 70820 EMAIL: info@pecla.com PHONE: 225.769.2810 FAX: 225.769.2882 PECLA.com</p>	<p>Sellers & Associates, Inc. ENGINEERS SURVEYORS 148-B EASY STREET LAFAYETTE, LOUISIANA 70506-3095 (337) 232-0777 • FAX (337) 232-0851 www.sellersandassociates.com 100 THOMAS STREET ABBEVILLE, LOUISIANA 70510 (337) 893-2808</p>	<p>TECH-CON Post Tension Foundations Service & Supplies Harley Nethken Chief Operating Officer Strong products Even stronger service. 985.641.1212 1.800.749.1225 Cell 985.290.8212 harley@tech-con.net TECH-CON.NET 57362 Allen Road Slidell, LA 70461 pH CERTIFIED</p>	<p>Traffic Engineering - Transportation Planning New Orleans Baton Rouge www.urbansystems.com 504-523-5511 Certified DBE, WBE & WOSB URBAN SYSTEMS Inc.</p>
<p>PROVIDENCE ENVIRONMENTAL ENGINEERING ENVIRONMENTAL TECHNOLOGY WWW.PROVIDENCEENG.COM Providence Engineering and Environmental Group LLC</p>	<p>SJB Group LAND SURVEYING SUBSURFACE UTILITY ENGINEERING CIVIL ENGINEERING PLANNING PROGRAM MANAGEMENT ENVIRONMENTAL CONSULTING PHONE: 225.769.3400 EMAIL: info@sjbgroup.com www.sjbgroup.com</p>	<p>Terracon Explore with us Facilities Environmental Geotechnical Materials 4 locations serving Louisiana Baton Rouge Lake Charles New Orleans Shreveport (225) 344-6052 Terracon.com/Baton-Rouge</p>	<p>VOLKERT Baton Rouge Office 9448 Brookline Drive Baton Rouge, LA 70809 Office 225.218.9440 batonrouge@volkert.com New Orleans Office 4141 Bienville Street, Ste 102 New Orleans, LA 70119 Office 504.488.8002 Mandeville Office 1580 W Causeway Approach, Ste 4 Mandeville, LA 70471 Office 985.231.6501 Monroe Office 114 Venable Lane Monroe, LA 71203 Office 318.388.1422</p>
<p>PROUET ARCHITECTURE & ENGINEERING office@prouet.com (337) 237-6517 prouet.com</p>	<p>SOUTHERN SURVEY SERVICES Professional Land Survey & Consulting Services Office: 1.337.565.6083 Fax: 1.337.565.6164 www.southernsurvey.xyz 111 Arabian Drive Lafayette, LA 70507</p>	<p>TOLUNAY-WONG ENGINEERS Geotechnical Engineering • Deep Foundations Testing Environmental Services • Construction Materials Testing 1.888.887.9932 TWEINC.COM Offices throughout Texas and Louisiana</p>	<p>Nelson Waldemar S. Nelson and Company INCORPORATED Founded 1945 Complete Engineering, Architectural, Environmental and Project Management Services 1200 St. Charles Ave. New Orleans, LA 70130 Telephone: (504) 523-5281 4 CityNorth 16945 Northchase Drive Suite 200 Houston, TX 77060 Telephone: (281) 999-1989 www.wsnelson.com</p>
<p>RALEY AND ASSOCIATES, INC. Civil & Structural Engineering, Surveying, Planning & Consulting 4913 Sherd Road Bossier City, LA 71111 Phone: 318-752-9023 • Fax: 318-752-9025 www.raleyandassociates.com</p>	<p>Stantec Stantec Consulting Services 500 Main Street, Baton Rouge, LA 70801 (225) 765-7400</p>	<p>TRAFFIC COMMANDER WE'RE HIRING! Traffic Control Services Signs Guard Rail Fencing Safety Products Pedestrian Barriers 504.635.2400</p>	<p>WASKEY Paul J. Kocke, Jr., P.E. Engineering Manager 2651 N. Flannery Rd. Baton Rouge, LA 70814 pkocke@waskey.com www.waskey.com Direct: (225) 400-0077 Mobile: (225) 678-3904 Main: (225) 926-8752 Fax: (225) 926-8756</p>
<p>(R) REVOLUTION ENGINEERING MECHANICAL, ELECTRICAL, AND PLUMBING DESIGN NEW ORLEANS, LA (504) 446-7744 WITH AN OFFICE IN KANSAS CITY AND HEADQUARTERS IN LAS VEGAS</p>	<p>T. BAKER SMITH A CENTURY OF SOLUTIONS Kenneth Wm. Smith, P.E., P.L.S. President & CEO Direct Line: 985.223.9248 Cell: 985.852.3433 kenneth.smith@tbsmith.com www.tbsmith.com</p>	<p>TRIGON ASSOCIATES 1515 Poydras Street, Suite 930 New Orleans, LA 70112 Tel: 504.585.5767 Fax: 504.585.5747 trigon@trigonassociates.com</p>	<p>WEIGH TECH Weighing Technologies, Inc. Kevin Mewhoun Senior Outside Sales Manager Beaumont Freeport Seabrook T: 409-842-5386 F: 409-842-9381 C: 281-226-3478 Email: kmewhoun@weigh-tech.com ISO 9001 ISO 17025 REGISTERED ACCREDITATION</p>

Call 811 before YOU DIG.

Call 811 or visit Louisiana811.com at least two full work days in advance before digging.

That's all it takes to notify Louisiana 811 members and avoid hitting nearby utility lines and pipelines, preventing injury and costly accidents.

Louisiana



Louisiana811.com

CALL 811. It's free. It's the law.

THE LOUISIANA ENGINEERING SOCIETY

Who we are:

Since 1898 LES has been the flag bearer for the licensure and professional practice of engineering in Louisiana. The Society represents the individual Engineer in all technical disciplines and all occupational areas of practice, including construction, education, government, industry, and private practice. Our organization is dedicated to the continuous advancement of the professional engineer by:

- Encouraging engineers to elevate their skills, competencies, and ethics
- Upholding that the health, safety, and welfare of the public are best served when engineering work is performed by or under the supervision of a professional engineer
- Supporting and promoting high standards for engineering education
- Recognizing engineering achievements and academic scholarships
- Contributing services to the public and the profession
- Advocating professional registration of all engineers

What we do:

Through our eight chapters in Alexandria, Baton Rouge, Bayou, Lafayette, Lake Charles, Monroe, New Orleans, and Shreveport, LES exemplifies its long-term legacy and commitment to our state by providing:

- Recommends appointments for 9 of the 11 LAPELS Board members
- Best legislative lobbyist in Louisiana tracking legislative bills for the Society
- Two Annual Conferences for members to acquire multiple PDHs and further education Host multiple 8-hour seminars to help members gain Life Safety Code & ADA compliance Appointment of two LES members to the State's Facility Planning and Control Engineering Selection Board
- Recognize members' accomplishments by awarding up to 8 annual awards
- Offer On Demand Recorded Webinars for members to help meet PDH requirements Provides excellent networking opportunities Publishes The Louisiana Engineer & Surveyor Journal quarterly
- LES Members get a discounted rate for all LES conferences and seminars both live and virtual Provide Leadership Opportunities by serving on State Board, Chapters' Boards, and State Committees
- Provide scholarships for college students studying engineering
- Sponsors state level & participates in national level MATHCOUNTS Competitions