

Louisiana Engineer & Surveyor Journal

May 2015

Vol. 18 No. 2

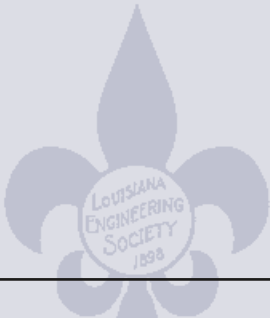
Inside This Issue:



LAPELS

Message from
the Chairman

Page 3



LES

Multi-State Engineering
Society Conference

Page 17



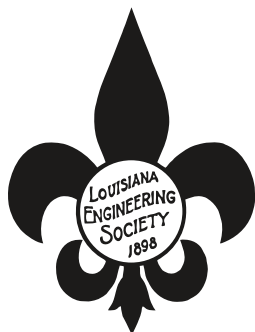
ACEC/L

Message from the
Executive Director

Page 25



HEATHER R. KLINGMAN, PE
LOUISIANA ENGINEERING SOCIETY 2015/2016 PRESIDENT



Louisiana Engineering Society

9643 Brookline Avenue, Suite 116, Baton Rouge, LA 70809-1488

Telephone: (225) 924-2021, Fax: (225) 924-2049

E-mail: les@les-state.org

Website: <http://www.les-state.org>



American Council of Engineering Companies of Louisiana

9643 Brookline Avenue, Suite 112, Baton Rouge, LA 70809-1488

Telephone: (225) 927-7704, Fax: (225) 927-7779

E-mail: acecl@acecl.org



Louisiana Professional Engineering and Land Surveying Board

9643 Brookline Avenue, Suite 121, Baton Rouge, LA 70809-1488

Telephone: (225) 925-6291, Fax: (225) 925-6292

Website: www.lapels.com



LOUISIANA ENGINEER AND SURVEYOR JOURNAL

May 2015

Vol. 18 No. 2

The Louisiana Engineer & Surveyor Journal

(ISSN: 15275965, USPS 588-360)

9643 Brookline, Suite 116

Baton Rouge, LA 70809-1488

This is the official publication of the Louisiana Engineering Society, the Louisiana Professional Engineering and Land Surveying Board, and the American Council of Engineering Companies of Louisiana.

This magazine is published quarterly. "PERIODICALS POSTAGE PAID at Baton Rouge, LA."

POSTMASTER—Please send address changes to:
The Louisiana Engineer & Surveyor Journal
9643 Brookline Ave., Suite 116, Baton Rouge, LA 70809-1488
Telephone: (225) 924-2021, Fax: (225) 924-2049

LES ADVERTISING RATES

<u>SIZE</u>	<u>COST PER ISSUE</u>	<u>COST PER YEAR</u>
Full Page Inside	\$1,200	\$3,840
Full Page Back Cover	\$1,500	\$4,800
1/2 Page	\$700	\$2,240
1/4 Page	\$420	\$1,344

- 1) Prices quoted apply to camera-ready copy. A one-time charge will be added for composition of an ad, art work, or if changes are made during the contact period.
- 2) All ads must be prepaid. Advertisements with payment should be sent to LES by the 15th of the month preceding month of issue.
- 3) Published quarterly, February, May, August and November.

PUBLICATIONS COMMITTEE

Brenda Gajan, *Managing Editor*

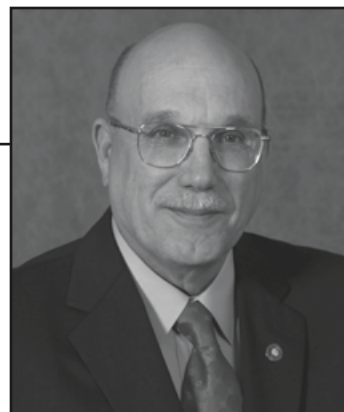
Nancy Donald, *Associate Editor*

Dan Mobley, *Associate Editor*

The Louisiana Engineering Society, the Louisiana Professional Engineering and Land Surveying Board, and the American Council of Engineering Companies of Louisiana do not guarantee the accuracy of statements made or necessarily concur with opinions expressed in the publication.

MESSAGE FROM THE CHAIRMAN

Theodore H. Thompson, PE



Theodore H. Thompson, PE
Chairman

"Safeguard life, health, and property and to promote the public welfare..." the guiding words for our board. We will soon be losing two members, who mentored me with those words as guiding principles. Mr. Ali Mustapha, PE, FNSPE, FASCE, who has served on the board since 1 January 2006, and Mr. Ernie Gammon, PLS, CH, FNSPS, who has served since 31 March 2009. At the time of writing this article, Governor Jindal has not named replacements for these individuals.

Both board members have set the example as knowledgeable, dedicated, and professional individuals of their respective professions. Mr. Mustapha is passionate about his profession and the board, and diligently works to eliminate obstacles in the path of individuals seeking to become licensed, yet insuring protection of the public. Although Mr. Gammon has been a bit more reserved at times, he, too, is passionate about protecting the public. He makes his points with a sharp wit, dry humor, and the fewest words possible, by simply asking pointed questions, causing us all to stop-and-think. As with the past board members I have served, I will immensely miss the experience, humor, and wit of both Ernie and Ali. Please know I will continue to work hard, to not let you and past board members down.

In preparing this message, I reviewed past chairmen and our only chairwoman's first messages. and found a common theme, which echoes my own thoughts. While I don't want to repeat what others have said, I, too, must convey how truly honored I am to serve in the capacity of chairman and as a member of the board. I was honored when the

Louisiana Engineering Society included me in their list of nominees to the governor.

While I look forward to my final year, I was amazed how each past chairman and chairwoman seemed to jump out of their chair when it came time to 'pass the gavel' to the incoming chairman. I seldom saw smiles so wide during their previous years. Admittedly, I'm beginning to understand why. Many members regret having to leave the board; but, all have expressed their gratitude for the honor of serving.

Previous chairmen/chairwoman have indicated they were forewarned regarding how much work is involved on serving on a "working board"; but, were a bit surprised when they found out the true level of involvement of each member. My thanks to Emeritus Board Member, Mr. Sonny Launey, for providing me with much insight in preparing for the board and the work involved. He was right. Others have explained board committees and operations, so I will just share a few numbers, on the past year's operations, I found interesting.

During Mr. Gammon's final year, the staff and board members completed the following:

- Applications received and reviewed (including rescheduled exam applications) – 2,800
- Certificates and licenses issued – 1,825
- Applications processed and approved for exams – 525 (PE and PLS only)
- Number of applicants certified to take the FE and the FS exams - 147
- CPD audits – 400+
- Enforcement cases opened – approximately 120
- Enforcement cases ratified by the Board – 36

Given published reports of the State's finances, I am pleased to report the board continues to be financially stable. We

continued on next page

UPCOMING BOARD MEETINGS

June 1 - 2, 2015 – Baton Rouge

July 27 – 28, 2015 – Baton Rouge

September 28, 2015 – New Orleans (Tulane)

November 16, 2015 – Baton Rouge

Board Members

Theodore H. Thompson, PE
Chairman

Kevin E. Crosby, PE, PLS
Vice Chairman

David L. Patterson, PLS
Treasurer

John W. 'Billy' Moore, PE
Secretary

Terry J. Huval, PE
Christopher P. Knotts, PE
Paul N. Hale, PhD., PE
Alan D. Krouse, PE
D. Scott Phillips, PE, PLS
Ali M. Mustapha, PE
M. Ernest Gammon, PLS

Board Staff

Donna D. Sentell
Executive Director

Tyson Ducote
Director of Enforcement

www.lapels.com

are a self-funding entity, operating solely from application and renewal fees. Contrary to some's belief, any imposed fines are sent to the state's general fund. We have practiced fiscal responsibility to the public and to our registrants. One example which directly affected you, the registrant, was when the board lowered its fees for two renewal cycles, in order to reduce surplus funds. We maintain sufficient funds to cover our operating expenses, and we review financials at each board meeting to insure we stay on budget and maintain the prudent level of available funds.

As I stated earlier, past chairmen and chairwoman have indicated the members are working members; however, they did not mention that several board members and Emeritus Board Members also serve on several committees of the National Council of Examiners for Engineering and Surveying (NCEES), of which the Louisiana Board is a member. Our Executive Director, Ms. Sentell, also serves on NCEES national committees. They set an excellent example for all professionals, by giving of their time in support of their community and our profession.

All the board members serve on various committees that review applications. From my reviewing experience, I offer the following suggestions to the applicants and our registrants, who are verifying work experience or providing a personal reference. The application is not the time for an applicant to be humble or brief. Do not provide job descriptions. The applicant should tell us what they, as an individual, have accomplished. Although it is not required, we recommend the applicant include some information about project sizes or complexity, as doing so helps the reviewing board members better understand and evaluate 'progressive engineering experience.' Tell us in the first person: I designed, I calculated, I analyzed, etc.; don't leave

board members guessing who performed the described work. As a mentor, please help your subordinate, peer, or employee by reviewing their application and providing guidance.

If you are completing a personal reference form, it is acceptable, and I encourage you to write an extra paragraph or two about the applicant. We appreciate the time you took to endorse the applicant with the extra words, as it speaks to the character and ability of the applicant that you thought enough to write additional comments. Trust me, the board members look very closely at the comments submitted.

So not so briefly, that is the state of the board. The coming year should repeat the past year's activity level, along with the anticipated challenges coming from our State Legislature. I urge you, as registrants, to stay informed on current bills, which have a profound effect on our profession and the operation of this board. Do not overlook announcements or e-mails from your technical and professional societies asking you to voice your opinion to our legislature. Please get in or stay involved in the legislative process.

I also invite and welcome you to attend our board meetings to observe first-hand our interaction, and how we conduct business. We never put anyone to sleep. We have a public comment time, if you desire to voice your thoughts regarding any matter, which may affect you, your fellow registrants, or board operations. I am sure we will have another challenging year for you to observe.

To quote past chairman, Mr. Gammon, "We will do our absolute best to not only meet these challenges, but to leave this Board, and the professions, in just a little better shape than when we found them."

DISCIPLINARY AND ENFORCEMENT ACTIONS

Tyson Ducote, Director of Enforcement

The Board continues to investigate alleged violations of the laws and rules which regulate the practice of engineering and land surveying in Louisiana. Substantiated violations result in disciplinary or enforcement action being taken either through a Consent Order or by Board

Decision following a formal hearing at which the respondent is adjudged guilty of one or more violations. Below is a summary of the disciplinary/enforcement actions taken by the Board since the previous issue of the Journal.

PRACTICE WITH AN EXPIRED LICENSE:

Argus Architecture Engineering, L.L.C., a professional engineering firm (EF-3628), was subject to disciplinary action by the Board for practicing and offering to practice engineering in Louisiana with an expired license in violation of La. R.S. 37:698(A) (9) and (16). The firm's license was in an expired status from April

1, 2013 through February 6, 2014 and during this time period the firm practiced and offered to practice engineering in Louisiana by admittedly offering to provide engineering services in Louisiana and providing engineering services on approximately 13 projects in Louisiana. The firm has entered into a Consent Order with the Board, wherein it admitted to the referenced violations of the above laws/rules and agreed to pay a fine of \$500; to pay administrative costs of \$221.01; to pay past unpaid renewal fees of \$180; to have its supervising professional successfully complete



Tyson Ducote
Director of Enforcement

the Board's online Louisiana Laws and Rules Quiz; and to the publication of the Consent Order on the Board's website, the printing of a summary of this matter by name in this publication, and the reporting of this matter by name to NCEES.

Larry R. Harper, a professional engineer (PE-36872), was subject to disciplinary action by the Board for practicing and offering to practice engineering in Louisiana with an expired license in violation of La. R.S. 37:698(A)(9) and (16). Mr. Harper's license has been in an expired status since October 1, 2012 and during this time period he practiced and offered to practice engineering in Louisiana by admittedly offering to provide engineering services in Louisiana and providing engineering services on three projects in Louisiana. Mr. Harper has entered into a Consent Order with the Board, wherein he admitted to the referenced violations of the above laws/rules and agreed to pay a fine of \$1,700; to pay administrative costs of \$359.42; to pay past unpaid renewal fees of \$135; to successfully complete the Board's online Louisiana Laws and Rules Quiz; to successfully complete the Board's online Louisiana Professionalism and Ethics Quiz; to immediately cease and desist the practicing of and/or offering to practice engineering Louisiana until such time as his expired license is renewed; and to the publication of the Consent Order on the Board's website, the printing of a summary of this matter by name in this publication, and the reporting of this matter by name to NCEES.

PRACTICE WITH AN EXPIRED LICENSE BY AN EMPLOYEE:

Integrated Management Services, P.A., Inc., a professional engineering firm (EF-2662), was subject to disciplinary action by the Board for having an employee who practiced and offered to practice engineering in Louisiana with an expired license in violation of La. R.S. 37:698(C), *to wit* La. R.S. 37:698(A)(9) and (16). Since October 2012, Larry R. Harper (on behalf of and in the name of the firm) admittedly offered to provide engineering services in Louisiana and provided engineering services on three projects in Louisiana. Mr. Harper was a professional engineer, however his license has been in an expired status since October 1, 2012. Mr. Harper was also an employee of the firm. The firm has entered into a Consent Order with the Board, wherein it admitted to the referenced violations of the above laws/rules and agreed to pay a fine of \$500; to pay administrative costs of \$321.53; and to the publication of the Consent Order on the Board's website, the printing of a summary of this matter by name in this publication, and the reporting of this matter by name to NCEES.

MATERIAL MISREPRESENTATION OR GROSS MISCONDUCT IN THE PRACTICE OF ENGINEERING OR LAND SURVEYING:

Gurtler Bros. Consultants, Inc., a professional engineering firm (EF-2475), was subject to disciplinary action by the Board for committing a material misrepresentation or gross misconduct in the practice of engineering in Louisiana in violation of La. R.S. 37:698(A)(2). In 2013, Michael K. A. Gurtler (an unlicensed individual on behalf of and in the name of the firm) prepared, signed and issued to a client in Louisiana an inspection report relative to hailstorm damage to a residence in Louisiana. The client requested that Mr. Gurtler prepare the inspection report in order to rebut an engineering report prepared by an engineering firm for the property insurer of the residence. Mr. Gurtler's report (a) identified him as the President of the firm, (b) described the firm as a Louisiana-licensed professional engineering firm which engages in the business of "engineering and inspections" and provides "engineering services" and (c) stated that the inspection report was an "instrument of professional service" and was a "professional opinion". The reference to the

firm being a Louisiana-licensed professional engineering firm was accompanied by the firm's licensure number and was placed directly above Mr. Gurtler's signature, name and title. Also in 2013, prior to his preparation of the inspection report, Mr. Gurtler (on behalf of and in the name of the firm) gave to the client both (a) his curriculum vitae which (i) identified him as the President of the firm and (ii) described the firm as one which engages in the business of "engineering and inspections" and provides "engineering services"; and (b) his "expert testimony record" which described the firm as one which engages in the business of "engineering and inspections" and provides "engineering services". Mr. Gurtler was the President and an owner of the firm. The firm has entered into a Consent Order with the Board, wherein it admitted to the referenced violations of the above laws/rules and agreed to pay a fine of \$1,000; to pay administrative costs of \$760.17; to ensure that its employees and representatives immediately cease and desist the use of the words "engineer", "engineering" or any modification or derivative thereof in referring to themselves, in conjunction with their names or in describing or promoting their business or activities in Louisiana until such time as they are duly licensed by the Board; to have its supervising professional successfully complete the Board's online Louisiana Laws and Rules Quiz; to have its supervising professional successfully complete the Board's online Louisiana Professionalism and Ethics Quiz; and to the publication of the Consent Order on the Board's website, the printing of a summary of this matter by name in this publication, and the reporting of this matter by name to NCEES.

LAND SURVEYING STANDARDS OF PRACTICE VIOLATIONS:

Charles R. St. Romain, PE, PLS, a professional engineer (PE-15941) and professional land surveyor (PLS-4415), was subject to disciplinary action by the Board for failing to comply with the Board's standards of practice for boundary surveys in violation of La. R.S. 37:698(A)(6), *to wit* LAC Title 46:LXI§2907(G)(3), 2907(G)(4), 2907(G)(6)(c), 2907(G)(14)(c) and 2907(G)(14)(i). In 2013, Mr. St. Romain performed a property boundary survey and prepared, signed, sealed and issued a survey map for property in Louisiana in which (a) no bearings or dimensions were shown for a private servitude of passage, (b) not all monumentation was shown for two lots, (c) the basis of bearing was unclear and a line called for in the map was not labeled and (d) the vicinity map did not show the distance to the roadway intersection and it was not drawn to scale. Also in 2013, Mr. St. Romain performed a property boundary survey and prepared, signed, sealed and issued a survey map for property in Louisiana in which the basis of bearing was unclear and a line called for in the map was not labeled. Additionally, in 2013, Mr. St. Romain performed a property boundary survey and prepared, signed, sealed and issued a survey map for property in Louisiana in which (a) not all monumentation was shown for one tract, (b) the basis of bearing was unclear and a line called for in the map was not labeled and (c) the legend for symbols and abbreviations was incomplete. Mr. St. Romain has entered into a Consent Order with the Board, wherein he admitted to referenced violations of the above laws/rules and agreed to pay a fine of \$1,000; to pay administrative costs of \$1,033.10; to successfully complete the online Louisiana Standards of Practice for Boundary Surveys Quiz; to correct the standards of practice violations on revised survey maps, provide the revised survey maps to the Board for review, submit the revised survey maps to the parish planning and zoning commission after Board review, properly file the revised survey maps into the public record after the commission review, and provide certified copies of the filed revised survey maps to the Board; and to the publication of the Consent Order on the Board's website, the printing of a summary of this matter by name in this publication, and the reporting of this matter by name to NCEES.

FAILURE TO USE EXACT FIRM NAME:

Integrated Management Services, P.A., Inc., a professional engineering firm (EF-2662), was subject to disciplinary action by the Board for providing or offering to provide engineering services in Louisiana with a firm name which is not the exact firm name contained on the firm's certificate of licensure issued by the Board in violation of La. R.S. 37:698(A)(6), *to wit* LAC Title 46:LXI§2307. Since 2003, the firm admittedly advertised itself on its website and elsewhere (and provided and offered to provide engineering services on numerous projects) in Louisiana under the firm name of "IMS Engineers", which included at least 70 such projects since 2009. Additionally, in 2012 the firm prepared and issued a project manual for a project in Louisiana which identified the firm as "IMS Engineers". The firm contended that its use of the "IMS Engineers" trade name (which it had registered with the Louisiana Secretary of State in 2013) in that way was an exercise of its constitutionally protected commercial free speech rights and was not misleading. The firm has entered into a Consent Order with the Board, wherein it admitted to the referenced violations of the above laws/rules and agreed to pay a fine of \$4,000; to pay administrative costs of \$531.26; to immediately cease and desist providing and/or offering to provide engineering and the identification or advertisement of itself in Louisiana through a firm name unless the exact firm name contained on its certificate of licensure issued by the Board is included on the materials used; and to the publication of the Consent Order on the Board's website, the printing of a summary of this matter by name in this publication, and the reporting of this matter by name to NCEES.

UNLICENSED OFFER AND/OR PRACTICE OF ENGINEERING OR LAND SURVEYING:

TEEMCO, LLC, an unlicensed firm which subsequently became licensed effective September 23, 2013 (EF-5404), was subject to enforcement action by the Board for unintentionally practicing and/or offering to practice engineering in Louisiana without proper licensure in violation of La. R.S. 37:681 and 37:700(A)(1) and (9), *to wit* LAC Title 46:LXI§2301(B). Between 2012 and August 2013, the firm unintentionally provided and offered to provide engineering services on nine projects in Louisiana. The firm has entered into a Consent Order with the Board, wherein it admitted that its unintentional conduct constituted violations of the above laws/rules and agreed to pay a fine of \$5,000; to pay administrative costs of \$564.94; and to the publication of the Consent Order on the Board's website, the printing of a summary of this matter by name in this publication, and the reporting of this matter by name to NCEES.

Keith B. Cook, an unlicensed individual, was subject to enforcement action by the Board for unintentionally practicing and/or offering to practice engineering in Louisiana without proper licensure in violation of La. R.S. 37:681 and 37:700(A)(1). Between 2012 and July 2013, Mr. Cook unintentionally provided and offered to provide engineering services on nine projects in Louisiana, including the use of his Oklahoma professional engineer seal on some or all of the documents issued by him in connection with said projects. Mr. Cook has entered into a Consent Order with the Board, wherein he admitted that his unintentional conduct constituted violations of the above laws/rules and agreed to pay a fine of \$2,500; to pay administrative costs of \$379.17; to immediately cease and desist the practicing of and/or offering to practice engineering in Louisiana until such time as he is duly licensed by the Board; and to the publication of the Consent Order on the Board's website, the printing of a summary of this matter by name in this publication, and the reporting of this matter by name to NCEES.

Energy Logistics Group, LLC, an unlicensed firm, was subject to enforcement action by the Board for practicing and/or offering to practice land surveying and using the words "survey" and "surveys" in conjunction with its name and business activities in Louisiana without proper licensure in violation of La. R.S. 37:681 and 37:700(A)(1), (7) and (9), *to wit* LAC Title 46:LXI§2301(B). Between December 2011 and February 2013, the firm prepared and issued to its client maps for a project in two parishes in Louisiana, including a map showing pipelines, servitude boundaries, utility transmission line towers and topographic features located in Louisiana. Additionally, since at least May 2013 the firm has (a) represented on its website that it offers services which include the following: "pipeline mapping", "soft stake and layout of proposed well sites as per clients provided position", "preliminary field surveys, sketches, and aerials of project layouts, orientation, and elevations", "coordinate with survey project manager and oversee crew during hard stake of well site locations and pipelines and report daily progress to client" and "detailed maps including wells, pipelines, valve settings, and other above ground appurtenances", (b) conducted business in Louisiana and (c) maintained offices in Louisiana. The firm has entered into a Consent Order with the Board, wherein it did not contest that its conduct constituted violations of the above laws/rules and agreed to pay a fine of \$900; to pay administrative costs of \$724.74; to immediately cease and desist the preparation and issuance of maps showing pipelines, servitude boundaries, utility transmission line towers and topographic features in Louisiana and otherwise the practicing of and/or offering to practice land surveying and the use of the words "survey", "surveyor", "surveying" or any modification or derivative thereof (a) in referring to itself or its unlicensed owners or employees, (b) in conjunction with the name of any of its unlicensed owners or employees, (c) on its website or (d) in describing or promoting its business or activities in Louisiana, until such time as it and its unlicensed owners and employees are duly licensed by the Board (although the firm is not prevented from preparing vicinity maps, which identify physical assets and the documentation of the findings in booklet form); and to the publication of the Consent Order on the Board's website, the printing of a summary of this matter by name in this publication, and the reporting of this matter by name to NCEES.

James T. Atkins, Jr., an unlicensed individual, was subject to enforcement action by the Board for practicing and/or offering to practice land surveying in Louisiana without proper licensure in violation of La. R.S. 37:681 and 37:700(A)(1). Between December 2011 and February 2013, Mr. Atkins prepared and issued to his client maps for a project in two parishes in Louisiana, including a map showing pipelines, servitude boundaries, utility transmission line towers and topographic features located in Louisiana. Mr. Atkins has entered into a Consent Order with the Board, wherein he did not contest that his conduct constituted violations of the above laws/rules and agreed to pay a fine of \$400; to pay administrative costs of \$683.95; to immediately cease and desist the preparation and issuance of maps showing pipelines, servitude boundaries, utility transmission line towers and topographic features in Louisiana and otherwise the practicing of and/or offering to practice land surveying in Louisiana until such time as he is duly licensed by the Board (although he not prevented from preparing vicinity maps, which identify physical assets and the documentation of the findings in booklet form); and to the publication of the Consent Order on the Board's website, the printing of a summary of this matter by name in this publication, and the reporting of this matter by name to NCEES.

L.T. Mapping Services, Inc., an unlicensed firm, was subject to enforcement action by the Board for practicing and offering to practice land surveying and using the words "survey", "surveys" and "surveying" in conjunction with its business activities in Louisiana without proper licensure in violation of La. R.S. 37:681 and 37:700(A)

(1), (7) and (9), *to wit* LAC Title 46:LXI§2301(B). Between December 2008 and December 2010, the firm admittedly provided and offered to provide land surveying services on a project in Louisiana. Additionally, since at least 2010, the firm has (a) represented on its website that (i) it specializes in providing “complete, accurate and up-to-date mapping and surveying procedures”, (ii) it utilizes “the latest in advanced computer technology and both GPS and conventional survey”, (iii) its services include “complete mapping and survey facilities”, (iv) its “goal is to stay at the leading edge of new survey and mapping technology and practices”, (v) its “RTK-GPS receivers allow for real-time satellite correction with sub-centimeter accuracy”, (vi) it uses “conventional total station survey equipment”, (vii) all of its surveys are “geo-referenced to the coordinate system preferred” by its clients and (viii) the services it has provided in Louisiana have included “as-built surveys”, “construction staking and as-built survey” and “surveying and mapping”; (b) conducted business in Louisiana; and (c) employed individuals in Louisiana. The firm has entered into a Consent Order with the Board, wherein it entered a plea of “no contest” and admitted that the Board’s evidence showed its conduct constituted violations of the above laws/rules and agreed to pay a fine of \$1,000; to pay administrative costs of \$553.02; to immediately cease and desist the practicing of and/or offering to practice land surveying and the use of the words “survey”, “surveys”, “surveying” or any modification or derivative thereof in referring to itself, on its website or in describing or promoting its business or activities in Louisiana, until such time as it is duly licensed by the Board; and to the publication of the Consent Order on the Board’s website, the printing of a summary of this matter by name in this publication, and the reporting of this matter by name to NCEES.

Larry M. Tucker, an unlicensed individual, was subject to enforcement action by the Board for practicing and offering to practice land surveying in Louisiana without proper licensure in violation of La. R.S. 37:681 and 37:700(A)(1). Between December 2008 and December 2010, Mr. Tucker admittedly provided and offered to provide land surveying services on a project in Louisiana. Mr. Tucker has entered into a Consent Order with the Board, wherein he entered a plea of “no contest” and admitted that the Board’s evidence showed his conduct constituted violations of the above laws/rules and agreed to pay a fine of \$2,000; to pay administrative costs of \$605.52; to immediately cease and desist the practicing of and/or offering to practice land surveying in Louisiana until such time as he is duly licensed by the Board; and to the publication of the Consent Order on the Board’s website, the printing of a summary of this matter by name in this publication, and the reporting of this matter by name to NCEES.

UNLICENSED USE OF THE WORD “ENGINEERING”:

Michael K. A. Gurtler, an unlicensed individual, was subject to enforcement action by the Board for using the word “engineering” in conjunction with his name and business activities in Louisiana without proper licensure in violation of La. R.S. 37:700(A)(7). In 2013, Mr. Gurtler (on behalf of and in the name of his professional engineering firm, Gurtler Bros. Consultants, Inc.) prepared, signed and issued to a client in Louisiana an inspection report relative to hailstorm damage to a residence in Louisiana. The client requested that Mr. Gurtler prepare the inspection report in order to rebut an engineering report prepared by an engineering firm for the property insurer of the residence. Mr. Gurtler’s report (a) identified him as the President of the firm, (b) described the firm as a Louisiana-licensed professional engineering firm which engages in the business of “engineering and inspections” and provides “engineering services” and (c) stated that the inspection report was an “instrument of professional service” and was a “professional opinion”. The reference to the firm being a Louisiana-licensed professional engineering firm

was accompanied by the firm’s licensure number and was placed directly above Mr. Gurtler’s signature, name and title. Also in 2013, prior to his preparation of the inspection report, Mr. Gurtler gave to the client both (a) his curriculum vitae which (i) identified him as the President of the firm and (ii) described the firm as a firm which engages in the business of “engineering and inspections” and provides “engineering services”; and (b) his “expert testimony record” which described the firm as one which engages in the business of “engineering and inspections” and provides “engineering services”. Mr. Gurtler was the President and an owner of the firm. Mr. Gurtler has entered into a Consent Order with the Board, wherein he admitted to the referenced violations of the above laws/rules and agreed to pay a fine of \$1,000; to pay administrative costs of \$760.17; to immediately cease and desist the use of the words “engineer”, “engineering” or any modification or derivative thereof in referring to himself, in conjunction with his name or in describing or promoting his business or activities in Louisiana until such time as his is duly licensed by the Board; and to the publication of the Consent Order on the Board’s website, the printing of a summary of this matter by name in this publication, and the reporting of this matter by name to NCEES.

MULTIPLE LAWS/RULES VIOLATIONS:

Tommy J. Avant, PE, a professional engineer (PE-34226), was subject to disciplinary action by the Board for (a) permitting the presentation of an associate’s academic or professional qualifications in a way that could be misunderstood in violation of La. R.S. 37:698(A)(6), *to wit* LAC Title 46:LXI§2509(B)(1), and (b) inadvertently assisting other persons in violating the laws and/or rules of the Board in violation of La. R.S. 37:698(A)(12). Since 2003, Integrated Management Services, P.A., Inc., a professional engineering firm, admittedly advertised itself on its website and elsewhere (and provided and offered to provide engineering services on numerous projects) in Louisiana under the firm name of “IMS Engineers”, which included at least 70 such projects since 2009. Additionally, in 2012 Mr. Avant (on behalf of and in the name of the firm) sealed, signed, dated and issued a project manual for a project in Louisiana which identified the firm as “IMS Engineers”. Mr. Avant contended that the firm’s use of the “IMS Engineers” trade name (which it had registered with the Louisiana Secretary of State in 2013) in that way was an exercise of its constitutionally protected free speech rights and was not misleading. Furthermore, in connection with the project, an uncertified employee of the firm distributed business cards in Louisiana which identified him as an “E.I.” Although the employee had never been certified as an engineer intern in Louisiana, Mr. Avant contended that the employee’s certification as an engineer intern in Florida was sufficient for him to use the designation, did not misrepresent his professional qualifications, and did not assert that he could practice engineering. Mr. Avant was an employee of the firm and has been its supervising professional since April 2011. Mr. Avant has entered into a Consent Order with the Board, wherein it was stated that he committed the referenced violations of the above laws/rules and he agreed to pay a fine of \$1,000; to pay administrative costs of \$520.01; to successfully complete the Board’s online Louisiana Laws and Rules Quiz; to successfully complete the Board’s online Louisiana Professionalism and Ethics Quiz; and to the publication of the Consent Order on the Board’s website, the printing of a summary of this matter by name in this publication, and the reporting of this matter by name to NCEES.

Anan Boonjindasup, PE, a professional engineer (PE-20903), was subject to disciplinary action by the Board for (a) having been disciplined by the licensing authority of another state for matters recognized as grounds for disciplinary action in Louisiana at the time the action was taken in violation of La. R.S. 37:698(A)(7), and (b) committing fraud, deceit, material misstatement or perjury, or the

giving of false or forged evidence, in applying for a renewal license with the Board in violation of La. R.S. 37:698(A)(1). In May 2012, the California Board for Professional Engineers, Land Surveyors and Geologists took disciplinary action against Mr. Boonjindasup for (a) breach or violation of contract to provide professional engineering services on three projects, (b) failure to utilize a written contract on three projects, (c) negligence through breaching the standard of care for professional engineers by failing to use a written contract and by failing to perform the agreed upon services on three projects and (d) failure to use a written contract while contracting for professional land surveying services on one project. The California Board revoked Mr. Boonjindasup's California professional engineer license. In August 2012, Mr. Boonjindasup submitted online to the Board his 2012 Louisiana professional engineer license renewal invoice, confirming and certifying thereon that (a) since his previous renewal in 2010 he had not been subject to disciplinary action by the licensing authority in another jurisdiction, (b) all information provided in his renewal invoice was true and correct to the best of his knowledge, information and belief and (c) an omission or untrue response in his renewal invoice may constitute fraud, deceit, material misstatement, perjury or the giving of false or forged evidence under La. R.S. 37:698 and 37:700. Mr. Boonjindasup has entered into a Consent Order with the Board, wherein he admitted to the referenced violations of the above laws/rules and agreed to pay a fine of \$750; to pay administrative costs of \$946.86; to successfully complete the Board's online Louisiana Laws and Rules Quiz; to successfully complete the Board's online Louisiana Professionalism and Ethics Quiz; and to the publication of the Consent Order on the Board's website, the printing of a summary of this matter by name in this publication, and the reporting of this matter by name to NCEES.

AIDING OR ASSISTING ANOTHER PERSON IN VIOLATING LAWS/RULES OF THE BOARD:

Tommy J. Avant, PE, a professional engineer (PE-34226), was subject to disciplinary action by the Board for aiding or assisting another person in violating the laws and/or rules of the Board in violation of La. R.S. 37:698(A)(12). Since October 2012, Larry R. Harper (on behalf of and in the name of Integrated Management Services, P.A., Inc., a professional engineering firm) admittedly offered to provide engineering services in Louisiana and provided engineering services on three projects in Louisiana. Mr. Harper was a professional engineer, however his license has been in an expired status since October 1, 2012. Mr. Harper was also an employee of the firm, and Mr. Avant was an employee, Vice President and supervising professional of the firm. Mr. Avant contends that he aided or assisted Mr. Harper's violation by failing to recognize that Mr. Harper's license had expired and to take appropriate supervisory action. Mr. Avant has entered into a Consent Order with the Board, wherein he admitted to the referenced violations of the above laws/rules and agreed to pay a fine of \$1,500; to pay administrative costs of \$321.53; to ensure that Mr. Harper immediately ceases and desists the practicing of and/or offering to practice engineering in Louisiana until such time as his expired Louisiana professional engineer license is renewed by the Board; to successfully complete the Board's online Louisiana Laws and Rules Quiz; to successfully complete the Board's online Louisiana Professionalism and Ethics Quiz; and to the publication of the Consent Order on the Board's website, the printing of a summary of this matter by name in this publication, and the reporting of this matter by name to NCEES.

Friedrich W. L. Gurtler, PE, a professional engineer (PE-25374), was subject to disciplinary action by the Board for unintentionally aiding or assisting other persons in violating the laws and/or rules of the Board in violation of La. R.S. 37:698(A)(12). In 2013, Michael K. A. Gurtler (an unlicensed individual on behalf of and in the

name of Gurtler Bros. Consultants, Inc., a professional engineering firm) prepared, signed and issued to a client in Louisiana an inspection report relative to hailstorm damage to a residence in Louisiana. The client requested that Michael Gurtler prepare the inspection report in order to rebut an engineering report prepared by an engineering firm for the property insurer of the residence. Michael Gurtler's report (a) identified him as the President of the firm, (b) described the firm as a Louisiana-licensed professional engineering firm which engages in the business of "engineering and inspections" and provides "engineering services" and (c) stated that the inspection report was an "instrument of professional service" and was a "professional opinion". The reference to the firm being a Louisiana-licensed professional engineering firm was accompanied by the firm's licensure number and was placed directly above Michael Gurtler's signature, name and title. Also in 2013, prior to his preparation of the inspection report, Michael Gurtler (on behalf of and in the name of the firm) gave to the client both (a) his curriculum vitae which (i) identified him as the President of the firm and (ii) described the firm as one which engages in the business of "engineering and inspections" and provides "engineering services"; and (b) his "expert testimony record" which described the firm as one which engages in the business of "engineering and inspections" and provides "engineering services". Michael Gurtler was the President and an owner of the firm. Friedrich Gurtler was the Vice President of the firm and has been the supervising professional of the firm since February 2000. Friedrich Gurtler has entered into a Consent Order with the Board, wherein he admitted that his conduct constituted unintentional violations of the above laws/rules and agreed to pay a fine of \$1,000; to pay administrative costs of \$760.17; to successfully complete the Board's online Louisiana Laws and Rules Quiz; to successfully complete the Board's online Louisiana Professionalism and Ethics Quiz; to ensure that the firm's employees and representatives immediately cease and desist the use of the words "engineer", "engineering" or any modification or derivative thereof in referring to themselves, in conjunction with their names or in describing or promoting their business or activities in Louisiana until such time as they are duly licensed by the Board; and to the publication of the Consent Order on the Board's website, the printing of a summary of this matter by name in this publication, and the reporting of this matter by name to NCEES.

Ballard L. Argus, PE, a professional engineer (PE-16019), was subject to disciplinary action by the Board for aiding or assisting another person in violating the laws and/or rules of the Board in violation of La. R.S. 37:698(A)(12). Between April 1, 2013 and February 6, 2014, Argus Architecture Engineering, L.L.C.'s professional engineering firm license was in an expired status and the firm practiced and offered to practice engineering in Louisiana by admittedly offering to provide engineering services in Louisiana and providing engineering services on approximately 13 projects in Louisiana. Mr. Argus was an owner, employee and the supervising professional of the firm. Mr. Argus has entered into a Consent Order with the Board, wherein he admitted to the referenced violations of the above laws/rules and agreed to pay administrative costs of \$205.79; to successfully complete the Board's online Louisiana Laws and Rules Quiz; to successfully complete the Board's online Louisiana Professionalism and Ethics Quiz; and to the publication of the Consent Order on the Board's website, the printing of a summary of this matter by name in this publication, and the reporting of this matter by name to NCEES.

NEW REGISTRANTS

Congratulations to the following newly licensed and certified for the period of 1/1/15 through 4/15/15

LAND SURVEYOR INTERNS

Bodin, Max Joseph, LSI
Book, Jarred Clay, LSI
Morris, Jonathan Corley, LSI

PROFESSIONAL SURVEYOR

Caraway, Jay Harper, PLS
King, Michael Joseph, PLS
Oestricher, Clifton Anthony, PLS
Simoneaux, Clint Michael, PLS
Staiano, Patrick Carl, PLS
Templeton, James Martin, PLS

SURVEYING FIRMS

EnSite USA, Inc., VF
Phillips Engineering and Land
Surveying, LLC, VF
Production Builder Services, Inc., VF
R-S-H Energy, LLC, VF

ENGINEER INTERNS

Abrams, Sarah Lorraine, EI
Aguirre-Deras, Max Abelardo, EI
Ahtunez, Celso Manuel, EI
Attumaly, Ashok Benjamin Basil, EI
Basyal, Gyan Prasad, EI
Black, Samuel Martin, EI
Bonanno, Bradley Peter, EI
Boncheff, Ryan Adam, EI
Borison, Jacob T., EI
Bourgeois, Joseph Taylor, EI
Bullock, Kirby Kathryn, EI
Burnett, Jared Michael- Bergen, EI
Carlin, Ted Michael, EI
Carpenter, George Walter, EI
Champagne, Darlvin Joseph, EI
Chandler, Brett Michael, EI
Chen, Tianyi, EI
Christian, Keisha Ramona, EI
Cockfield, Daniel Charles, EI
Codjoe, Julius A., EI
Collins, Cody Andre, EI
Conzelmann, Blake David, EI
Crosby, James Henry Francis, EI
Curry, Scott Patrick, EI
Davis, Jessica Dawn, EI
DeBlanc, Amanda Marie, EI
Dodge, Orin Charles, EI
Dubois, Casey Allen Leonard, EI
Eisen, Christopher Michael, EI
French, Brent Alexander, EI
Frith, Benjamin Gordon, EI
Galterio, John Vincent, EI
Gilliam, Steven David, EI
Gonzalez, Andres Javier, EI
Gu, Jie, EI
Guidry, Tracy, EI
Hansen, Gregory Stone, EI
Haraway, Jason Lee, EI
Harriss, Jeffrey Peyton, EI
Hart, Alexander Douglas, EI
Hartley, Joshua William, EI
Hartman, Benjamin J., EI
Hebert, Daniel James, EI
Henson, Carolyn Allison Quinn, EI
Hooter, Kevin Patrick, EI
Hudspeth, Lucas Allen, EI
Ivey, Justin Michael, EI
Jackson, Charles Leman, EI
Jergenson, Seth David, EI
Johnson, Blake Scott, EI
Jolly, Jonathan Matthew, EI
Ketiry, Kori M., EI
Khonsari, Karen Troy, EI
Landry, Jabari Khari, EI
Le, Hong Thi, EI
Lentz, James Thomas, EI
Lepine, Benjamin David, EI
Lockhart, Michael Orlan, EI
Maberry, Jolie Dufrene, EI
Malbroue, Arthur Joseph, EI
McBride, Christopher Martin, EI
McKean, Michael Clark, EI
Medina Berrios, Tesla Patricia, EI
Meek, Douglas Emerson, EI
Melara, Ana Christina, EI
Meligy, Hossameeldin Ahmed, EI
Mendow, Jeffery Paul, EI
Miller, Kirk Landon, EI
Mingo, Joseph Folse, EI
Mitchell, Nerrissa Kay, EI
Moore, Thomas Louis, EI
Morgan, Joseph Eugene, EI
Naccari, Shane Joseph, EI
Nesmeyanov, Gleb, EI
Nguyen, Cong Huu, EI
Nguyen, Lillian Kim, EI
Nicolaica, Victoria, EI
Olsen, Charles Joseph, EI
Pathak, Surendra Raj, EI
Pier, Gregory A., EI
Pinner, Amy Maria, EI
Pitre, Christopher Robert, EI
Poddar, Catherine G., EI
Priebe, Donald Everett, EI
Prosperie, Jacob Paul, EI
Raymond, Craig Joseph, EI
Reuther, James Mitchell, EI
Reynolds, Theodore Carl, EI

Richard, Brandon Demar, EI
Rodi, Matthew Ryan, EI
Schwab, William Kolbe Patrick, EI
Scolnick, Spencer Edward, EI
Sharma, Ravi, EI
Shook, Michael Robert, EI
Shou, Lin, EI
Shuckrow, William Chance, EI
Silbernagel, Dustin Gerard, EI
St. Pierre, James Paul, EI
Stanford, Stephanie Sloane, EI
Toups, Andrew Benjamin, EI
Triay, Melvin Louis, EI
Voelker, John Michael, EI
Vu, Hung Q., EI
Watson, Randy Joseph, EI
Wen, Rou, EI
Williamson, Jared Michael, EI
Willie, Robert Wilson, EI
Wyble, Anna Cecile, EI
Zerangue, Michael Wade, EI

PROFESSIONAL ENGINEERS

Abboud, Gordon Charles, PE
Adams, William Matthew, PE
Ahsan, Muhammad Mansoor, PE
Al-Bustami, Haytham Saleem, PE
Alexander, Lee M., PE
Amire-Brahimi, Daniel Jay, PE
Anderson, Craig Stuart, PE
Anvari, Atta, PE
Arces, Francisco Hernandez, PE
Arrington, Mark P., PE
Ashley, Nicholas Alexander, PE
Aulbaugh, Brian David, PE
Bachman, Thomas Charles, PE
Bajon, Ronald Paul, PE
Ballock, George P., PE
Balma, David Alan, PE
Bargas, Philip, PE
Barnett, Timothy Everett, PE
Barry, Patrick Philip, PE
Barry, Thomas Michael, PE
Batchellor, Aaron Kent, PE
Bayne, Stephanie Christel, PE
Beck, Joseph Edward, PE
Beck, Paul Charles, PE
Bergeron, Christopher Patrick, PE
Bice, Jacob Kenyon, PE
Biedenbach, Aaron Patrick, PE
Bienvenu, Andrew Thomas, PE
Binion, John Paul, PE
Blackledge, Charles Albert, PE
Blouin, Brett Matthew, PE
Bodin, Max Joseph, PE
Boon, David Michael, PE
Borst, Daniel Robert, PE
Bouche, Joseph A., PE
Bouquet, Rhett Michael, PE
Bowers, Robert Raymond, PE
Bretschneider, Martin, PE
Briganti, Edward Michael, PE
Brinkworth, Thomas William, PE
Broyles, David Russell, PE
Burra, Raj Kumar, PE
Butler, Pietrina Corinne/Scerbo, PE
Cahill, Richard Patrick, PE
Calderone, James T., PE
Campbell, John Girard, PE
Cantrelle, Jude Joseph, PE
Capuco, Benedict Paul, PE
Castay, Mark David, PE
Castillo, Cynthia L., PE
Celestin, Carey Carter, PE
Champagne, Kyle Jacob, PE
Chang, Xuhui, PE
Chatagnier, James Louis, PE
Chen, Guofu, PE
Clancy, Blaine Adam, PE
Clark, Kristine R., PE
Clay, Rebecca J., PE
Clements, Michael Lamar, PE
Clerecuzio, Charles A., PE
Cloutet, Chris Albert, PE
Cloyd, Jeffrey E., PE
Cobb, Arnold J., PE
Coco, Salvatore, PE
Coe, David Hamlin, PE
Colby, Jeffrey Lane, PE
Colvin, Cody McClain, PE
Connell, James Cody, PE
Cook, John Robert, PE
Cooke, Timothy C., PE
Cooley, Luke Martin, PE
Coppedge, Charles Don, PE
Correa, Luis Carlos, PE
Cotaya, Matthew Kyle, PE
Cottom, Jason Edward, PE
Coviello, Anthony David, PE
Craig, Jordan, PE
Creech, Adrian Lawrence, PE
Criswell, Lawson Brian, PE
Crump, Shane C., PE
Culver, Michael Allen, PE
Davis, Bert Neal, PE
DeGuzman, Arnie Santos, PE
Delatorre, Carlos, PE
DeVore, Daniel Curtis, PE
DiPersia, Dustin Lee, PE
Dohrwardt, William Joseph, PE
Domingue, Kendrick James, PE
Dunkley, Steven Wesley, PE
Dunlevy, Terence Joseph, PE
Dzwonczyk, Joseph, PE
Easterly, Thomas Peyton, PE
Easton, Dan, PE
Englade, Kevin Steven, PE
Eriksson, Roy Lindsay, PE
Evelly, Richard Ross, PE
Eymann, Laura Marie, PE
Fas, Patrick D., PE
Fandozzi, Andrew Joseph, PE
Farber, Fallon Michelle, PE
Farmer, Warren Richard, PE
Farrelly, James Kirkpatrick, PE
Faulkner, Jason Christopher, PE
Federle, Stephen Nicholas, PE
Felix-Gaxiola, Jose Lino, PE
Fisher, Cory A., PE
Florey, James Russell, PE
Foley, Paul William, PE
Fontenot, Christopher Blake, PE
Forrest, Angelle Latrice, PE
Forster, Zachary Reiff, PE
Freeman, Percy J., PE
Frost, Dustin Carl, PE
Frye, John Charles, PE
Fuschetto, Gaetano, PE
Garner, Michael Kevin, PE
Garner, Mitchell Wade, PE
Gascon, Ryan Charles, PE
Ghazizadeh, Sara, PE
Ghimire, Bhuban, PE
Gillette, Paula Piekutowski, PE
Gilman, Brian V., PE
Gonzales, Robert Benjamin, PE
Goodson, Scott James, PE
Goraliski, Jacob Ross, PE
Gosorowski, Scott Michael, PE
Greifenberg, Peter Andrew, PE
Grega, John Kelly, PE
Greve, Harald Gerhard, PE
Guiza, Elizabeth Burck, PE
Gutierrez, Tom, PE
Harrigill, Ryan David, PE
Harris, Eugene A., PE
Harris, Robert Alan, PE
Harrison, Preston Lee, PE
Hellmich, Jediah Scott, PE
Hess, Marc Tyler, PE
Hess, Wayne Neal, PE
Hetrick, Stephen Michael, PE
Hickey, Matthew Spencer, PE
Hildebrand, John F., PE
Hill, Matthew Edward, PE
Hilton, Charles Reed, PE
Ho, Man-Wai, PE
Hodge, Samuel Andrew, PE
Hodgeson, Mark George, PE
Hojat, Freidoun, PE
Hom, Stacy, PE
Hopf, Matthew Gary, PE
Howard, Joel Gottfried, PE
Huggett, Jonathan David, PE
Hughes, Stephen George, PE
Hulin, John Cory, PE
Hulon, Chace Mikel, PE
Humphries, John E., PE
Hundt, Brian Charles, PE
Hunter, Andrew D., PE
Ippolito, Ben William, PE
Jeanice, Christopher John, PE
Jensen, Timothy Donald, PE
Johnson, Brian Sidney, PE
Johnson, Kyle Timothy, PE
Joyce, Charles Thane, PE
Judy, Craig Warren, PE
Jurek, Ronald A., PE
Kane, Andrew T., PE
Kasch, Eric Bradley, PE
Keane, James Joseph, PE
Kelsch, Michael Ryan, PE
Kent, Stephen William, PE
Kmetz, David Michael, PE
Kneser, Kyle, PE
Knudsen, Timothy Paul, PE
Knoves, Erik Bradley, PE
Kohler, Jonathan Adam, PE
Kopping, Bradley Robert, PE
Kruiger, Samuel Keith, PE
Krus, Christopher Scott, PE
Labiche, Lance Christian, PE
Lane, Robert Brant, PE
Lange, Scott Michael, PE
Langstaff, Alex W., PE
LeBlanc, Logan John, PE
LeBlanc, Mark Edward, PE
Leonard, John Pauly, PE
Lewis, Andrew Paul, PE
Lindquist, Jason James, PE
Linyard, Benjamin James, PE
Liu, Qing, PE
Logan, David Badger, PE
Louviere, Jeremy M., PE
Lukus, Michael Gordon, PE
Luther, Matthew Braden, PE
Lyssy, Gordon James, PE
Maciejczyk, Joseph Paul, PE

Maner, Tara Leigh, PE
Marley, Lawrence Elton, PE
Marsh, Amanda L., PE
Martin, Jonathan James, PE
Martin, Matthew Claude, PE
Martinez, Charles Rene, PE
Matlock, Karen Lynn, PE
Maynard, Whitney Elizabeth, PE
Mazur, Gregory, PE
McClarrinon, Andrew Todd, PE
McCloskey, Marc Christopher, PE
McCormack, Daniel Whitson, PE
McCune, Lawrence Daniel, PE
McFadden, Tiffany Leigh, PE
McGarry, Dennis L., PE
McGlone, Morgan Thomas, PE
McGough, Michael Thomas, PE
McGuire, Michael Augustine, PE
McMahan, Michael Earl, PE
McMahan, Ellis Luke, PE
McNabb, James C., PE
McNew, Daimon Marlynn, PE
Miller, Bret Wayne, PE
Miller, Matthew Jay, PE
Mitchel, Corey Nicholas, PE
Monceaux, Glen Allen, PE
Montjoy, Stephen Carl, PE
Morgan, Jody Allen, PE
Morley, Mark A., PE
Morris, Justin Wayne, PE
Mouton, Jason Anthony, PE
Moyer, Ryan Joseph, PE
Mullen, Richard Paul, PE
Murhammer, Bertin Edward, PE
Neighbor, Kristopher Mark, PE
Nelligan, Timothy E., PE
Nelson, Paul E., PE
Neyland, Codi Anne, PE
Olson, Stephen Lawrence, PE
Ordeneaux, Ryan Paul, PE
Orr, James Russell, PE
Padgett, Lynn Alton, PE
Padmore, Myrtle-Rose, PE
Palmer, John Charles, PE
Pann, Timothy Charles, PE
Panneerselvam, Rajbarath, PE
Pargaonkar, Dileep Vasant, PE
Pearson, Lloyd Mark, PE
Penner, Kurt Gerhard, PE
Perkins, Anthony, PE
Perkins, Zachary Ryan, PE
Peterman, Richard Lewis, PE
Petito, Anthony Bruno, PE
Peyton, William Cranford, PE
Plyler, Roch Stephen Van, PE
Porter, Joshua Manning, PE
Powers, Kenneth Winfield, PE
Precise, Jonathan Neal, PE
Price, Stephen, PE
Pruitt, Michael Dale, PE
Puntty, Gregory Aaron, PE
Prutagunta, Rupesh Kumar, PE
Quinero, Carlos Enrique, PE
Raab, John Francis, PE
Rea, Vince Michael, PE
Reese, Elias, PE
Reisdorf, Matthew John, PE
Rentmeester, Alan Thomas, PE
Roberts, Keegan Lambert, PE
Robertson, Christopher George, PE
Robertson, Fred M., PE
Rogers, Jeffrey Kendall, PE
Rogers, John William, PE
Ruback, Christopher Donald, PE
Ruggs, Brian Trevoy, PE
Ruse, James S., PE
Salchow, Christina Elaine, PE
Sansotta, David Nicholas, PE
Sapp, Kerimar G., PE
Scheidt, Jon William, PE
Schexnayder, Justin Paul, PE
Schippers, Keith Michael, PE
Schor, Steven Eugene, PE
Schultz, Nathaniel Lee, PE
Schwitzer, Craig Michael, PE
Seawell, Henry Ravies, PE
Sellars, David Sammuell, PE
Sempel, Jaclyn Albright, PE
Sharkey, Michael James, PE
Silvas, Michael Ryan, PE
Simmons, Robert Edward, PE
Smith, Glen Edward, PE
Smith, Ronald Ray, PE
Smoak, Brandon Madison, PE
Snyder, Edward Eugene, PE
Solfer, Christopher Allen, PE
Sorci, Jason Charles, PE
Sorial, Antwan George, PE
Sotolongo, Katherine Smith, PE
Spalding, Ryan Christopher, PE
Spencer, John T., PE
Stanley, Newman E., PE
Starr, Bryan T., PE
Stevens, John S., PE
Stewart, Joseph Ashley, PE
Storlie, Vanessa Lynn, PE
Summers, William Ryland, PE
Sundke Mohammed, Ghouse, PE
Talavera, Mardonio, PE

Tate, Bradley L., PE
Taylor, David Karsten, PE
Taylor, Joseph Bret, PE
Taylor, Thomas Lynn, PE
Thomas, Douglas J., PE
Thomas, Michael Edward, PE
Thompson, Jessica L., PE
Thomson, Steven P., PE
Todd, Andy Paul, PE
Todd, Leah McFarlain, PE
Ungerman, Andrew John, PE
Valdez, Francisco, PE
Vaulman, Paul Richard, PE
Villareal, Marco Antonio, PE
Wagner, Marc Thomas, PE
Watts, William Francis, PE
Walker, Matt Steven, PE
Walsh, Roger Earl, PE
Walters, James Ashley, PE
Ward, Adam Case, PE
Warren, Todd P., PE
Watkins, Curtis Max, PE
Watkins, Joseph Douglas, PE
Wells, Travis Dean, PE
Weston, Daniel Frederick, PE
White, William Russell, PE
Wickfield, John Joseph, PE
Wiedenman, Martin J., PE
Wiegand, Danny Lee, PE
Wise, Jeffery Randolph, PE
Woods, Leonard Wayne, PE
Wyrosdick, Gregory Paul, PE
Yarbrough, Lance David, PE
Zacher, Paul Kenneth, PE
Zimmer, Roger Allan, PE
Zito, Phillip Ross, PE
Zuchetti Frignani, Martina, PE

ENGINEERING FIRMS

Accelerated Tower Engineering LLC, EF
ADCI Professional Corporation, S.C., EF
Aura Engineering, LLC, EF
Axiom PLLC, EF
Baccock Power Environmental Inc., EF
Bulldog Environmental LLC, EF
Buro Happold Consulting Engineers,
P.C. Professional Corporation, EF
Carmichael Engineering Inc., EF
Commercial Site Solutions Inc., EF
Concord Engineering Group, Inc., EF
Copasite Engineering and Design
Services, LLC, EF
COWI North America, Inc., EF
Crump Power Engineering, Inc., EF
CTC, Inc. of Nevada, EF
David W. Backstedt Jr., LLC, EF
Encon Services, Inc., EF
Entitlement and Engineering Solutions,
Inc., EF
Enviro Clean Cardinal, LLC, EF
Faith Technologies, Inc., EF
Forefront Emergency Management,
LP, EF
G2 Consulting Group, LLC, EF
George Butler Associates, Inc., EF
J. Connor Consulting, Inc., EF
John Zink Company, LLC, EF
Leigh and O'Kane, LLC, EF
Louisiana Land Engineering LLC, EF
Mabey Inc., EF
Mark J. Morvant, PE, LLC, EF
McNealy Engineering, Inc., EF
Morris & Associates, Engineers, Inc., EF
Muermann Engineering, LLC, EF
Northwest Technical Solutions, LLC, EF
Norwale Engineering, LLC, EF
Osmose Utilities Services, Inc., EF
Peter Allain, PE, LLC, EF
Phillips Engineering and Land
Surveying, LLC, EF
Power Engineering Consultants, LLC, EF
Power of Design Group LLC, EF
Production Builder Services, Inc., EF
Providence Engineering Corporation, EF
R-S-H Energy, LLC, EF
Radueng Engineering and Consulting,
LLC, EF
Richard L. Holm, LLC, EF
Robert Silman Associates Structural
Engineers, DPC (A Corporation),
EF
Soutex, Inc., EF
Southland Process Group, LLC, EF
Spire Engineering, Inc., EF
Tamarack Grove Engineering, PLLC, EF
Texas Design Interests, LLC, EF
Titan Engineering Consultants, LLC, EF
WBole Petroleum Engineer Consulting,
LLC, EF

SPONSOR PROVIDERS

Green Building Education Services, CPD
Institute of Transportation Engineers
(ITE), CPD
School of PE, CPD

EXPIRED REGISTRANTS

Certificates and licenses for the following individuals and firms expired on September 30, 2014. If this is not correct, please contact us

PROFESSIONAL SURVEYOR

Boswell, Jerry Waburn, PLS
Danna, Larry Wayne, PLS
Dantin, Terry Joseph, PLS
Fullerton, William Taylor, PLS
Jenkins, Franklin H., PLS
Jones, Benjamin P., PLS
Marques, Joseph M., PLS
Smith, Ronald Lee, PLS

SURVEYING FIRMS

Encompass Services, LLC, VF
James J. Jones & Associates, Inc., VF
Marine Surveys, LLC, VF
MIDCO Services, LLC, VF
Pyburn & Odom MCA, LLC, VF
R. L. Bennett Surveyor, LLC, VF
Schultz & Summers Engineering, Inc., VF

ENGINEER INTERNS

Adeyemi, Ayodeji T., EI
Akudo, Christopher Osita, EI
Alam, Md. Ashraf, EI
Alexis, LaDarryl James, EI
Austin, Ashley Wade, EI
Bacala, Joseph Anthony, EI
Baggett, Douglas Scott, EI
Bardwell, Mark Wayne, EI
Barr, Aaron Cosby, EI
Bauer, Gary Michael, EI
Baxter, Andrew Warren, EI
Beaugh, Aaron Scott, EI
Begland, Tracy Flora, EI
Bellone, Zachary Christopher, EI
Bhattarai, Sagar, EI
Blake, James Vincent, EI
Blanton, Tracy D., EI
Bonati, Joseph Carl, EI
Boyle, Robert Blake, EI
Bradley, Seth Michael, EI
Brais, Tracey A., EI
Breaux, James Whitney, EI
Brett, Marissa Billings, EI
Bruno, Damon Craig, EI
Burch, Guy Elston, EI
Butler, Jennifer Charisse, EI
Camp, Eric Glenn, EI
Canterbury, Scott Kyle, EI
Chaisson, Nathaniel James, EI
Champion, Justin Blake, EI
Chow, Joseph L., EI
Christian, David Eric, EI
Clapp, Reed, EI
Clarke, Herman St. Clare, EI
Clary, Sorcha Ann, EI
Clement, Dorothy May, EI
Connell, Timothy James, EI
Cottano, Todd James, EI
Crawford, Timothy Andrew, EI
Daniel, Lynna F., EI
Davis, Sarah L., EI
Deitch, Ari J., EI
Dinh, Duc Vinh, EI
Doredant, Derek Michael, EI
Dorsey, Stephan T., EI
Doucet, Benjamin C., EI
Downs, Cody Michael, EI
Du, Meilin, EI
Duchesne, Courtney Michelle, EI
Dufour, Scott Andrew, EI
Dunnam, Candace Jowers, EI
Eberle, Jeremy Kenneth, EI
Embry, James Everett, EI
Estopinal, Stewart Austin, EI
Farmer, Thomas F., EI
Folami, Ismail O., EI
Follette, Renee Radosta, EI
Foret, Christopher Jared, EI
Fuselier, Justin Christopher, EI
Gaudet, Loni Michelle, EI
Giambrone, Steven M., EI
Gizaw, Hiruy Admasu, EI
Gobert, Charmaine Jasmine, EI
Govan, Paul Bradford, EI
Guillot, Sydney Jo, EI
Hansen, Michael Henry, EI
Haydell, Charles Joseph, EI
Hebert, Hunter J., EI
Heroman, Jeffrey Sawyer, EI
Hill, Cedric Dewayne, EI

Hoffpauir, Kourtney Ackley, EI
Holder, Dreydon Jared, EI
Holland, Nicholas Anthony Williams, EI
Icaza, Juan Carlos, EI
Jeffrey, Lee Shafer, EI
Jenkins, Brent Cruz, EI
Jenkins, Dustin Michael, EI
Jenkins, James Hugh, EI
Johnson, Aaron Smith, EI
Johnson, Benjamin Charles, EI
Johnson, Dan Alexis, EI
Jolissaint, Robert E., EI
Jones, Jared Wayne, EI
Jones, Marchelle R., EI
Joseph, Corey, EI
Kafle, Sudeep, EI
Kajor, Thomas Paul, EI
Kelso, Jeremy Chad, EI
Kendrick, Baron Vaughn, EI
King, Ryan Hunter, EI
Kinler, Kyle L., EI
Labry, Brianne Elizabeth, EI
LaCroix, Joshua Mark, EI
Lambert, Mary Claire, EI
Langford, Lester Alexander, EI
Laurent, Matthew James, EI
Levy, David B., EI
Linsenmeyer, Joseph Leo, EI
Lisotta, Anthony J., EI
Lok, Mustafa S., EI
Loudon, Margaret Joy, EI
Lugibihl, Jonathan Paul, EI
Maggio, Matthew Jacob, EI
McLendon, Daniel Ryan, EI
Mendoza, Roberto David, EI
Miller, Justin Aaron, EI
Moghe, Hrishikesh Pradeep, EI
Mora Hurel, Andres Eduardo, EI
Mullen, Darren Christopher, EI
Ngo, Trung Huy, EI
Nguyen, Kien Tri, EI
Nicholls, James Gerhard, EI
Norton, Charles Leslie, EI
Ogea, Kari Lynn, EI
Osman, Hassan Mohamed, EI
Ours, Evan Alexander, EI
Ozturk, Ahmet Burak, EI
Pagan Escobar, Perla Marina, EI
Palermo, Paul Anthony, EI
Panasos, Anthony David, EI
Partington, Troy Caleb, EI
Patino, Laura, EI
Pearce, Brandon Morelle, EI
Pepper, Jonathan Edmond, EI
Perkins, Andrew Michael, EI
Pierce, Timothy Harold, EI
Pittman, Steven Wade, EI
Poirrier, Timothy James, EI
Pontius, Michael Earl, EI
Portus, David Anthony, EI
Pottharst, S. James Joseph, EI
Prawiro, Franciscus Xaverus, EI
Pye, John Marion, EI
Quitadamo, Christian Phillip, EI
Regmi, Krishna, EI
Reine, Addy Nicole, EI
Reynolds, Steven Patrick, EI
Rincon, Cesar Alberto, EI
Rios, Marc Edward, EI
Romero, Angela Marie Young, EI
Roundtree, Brent Anthony, EI
Roy, William Tyler, EI
Saleh, Khalid Lutfi, EI
Schiber, Kyle Brian, EI
Schwebach, Dean Robert, EI
Sellers, Edward Durmont, EI
Selvidge, Ronald Bryan, EI
Shrestha, Arbind Kumar, EI
Shrestha, Sangeet, EI
Singletary, Shane David, EI
Slaughter, Patrick Kelly, EI
Stagg, Jeremy Patrick, EI
Stebbins, Cory Joseph, EI
Stein, Daniel Joseph, EI
Suarez, Juan Joseph, EI
Tan, San Chiang, EI
Taris, William Joseph, EI
Taylor, Jeffrey Blaine, EI
Thomas, Alicia B., EI
Thomas, William Brandon, EI
Torres, Anamaria, EI

Tran, Nam Hoang, EI
Vu, Phuoc D., EI
Wattigney, Michael William, EI
Whetsel, Conor Ross, EI
Wing, Michael Ryan, EI
Yiadom, Kwaku K., EI
Yongobare, Gilles Armand, EI
Zhang, Wei, EI
Zhang, Ye, EI

PROFESSIONAL ENGINEERS

Almond, John Henson, PE
Backes, James McMurtrie, PE
Bailey, Karen Christine, PE
Baker, Bruce W., PE
Basurto, Renato M., PE
Bean, Ralph C., PE
Bennett, Michael Jay, PE
Berenyi, Antoine A., PE
Bertrand, Peter S., PE
Bonnecarriere, Donald Bert, PE
Bozenovici, Val, PE
Brandon, Gregory R., PE
Bruehl, Gabriel Anthony, PE
Bullock, Daniel Brian, PE
Bullock, Darcy Michael, PE
Byrd, Ronald Earl, PE
Cameron, Edwin Williams, PE
Castele, Daniel Joseph, PE
Cater, Kenneth Wayne, PE
Chandra, Krishna Samivel, PE
Chapski, Philip Laurence, PE
Clein, Robert B., PE
Clough, Scott Thomas, PE
Cole, Charles Frederick, PE
Combe, Adrian Joseph, PE
Cross, Thomas Frederick, PE
Crutti, John A., PE
Cuffman, Jerald Louis, PE
Dantin, Terry Joseph, PE
Davis, Kent, PE
Deatherage, James H., PE
DeConzo, Matthew Nicholas, PE
Dietrich, Stewart Guy, PE
Dileonardo, Vincent Carl, PE
Dillon, Martin A., PE
Drake, L. Evans, PE
Dwight, James T., PE
Dygart, Donald Lawrence, PE
Eichstaedt, Carl Lewis, PE
Emami, Bardia, PE
Emanuel, James Russell, PE
Fang, Chen-Shen, PE
Farrell, Ralph R., PE
Fessler, Ronald Wayne, PE
Fieglein, Mark William, PE
Ford, Ferrill Eugene, PE
Fullerton, William Taylor, PE
Galvez, Manuel F., PE
Garcia, Arthur F., PE
Gordon, Richard Allen, PE
Green, Joseph A., PE
Green, Roy A., PE
Guth, John Jacob, PE
Haider, Chowdhury Omar, PE
Haiges, Donald Munson, PE
Harrell, Charles Ray, PE
Hartford, Daniel Wayne, PE
Hayes, Robert Ryan, PE
Heidingsfelder, Jeffrey L., PE
Hesketh, Richard Vincent, PE
Hickey, Paul T., PE
Hildahl, Joni L., PE
Hoenig, John Joseph, PE
Hofferber, John E., PE
Houston, James Byron, PE
Humphrey, David R., PE
Ibrahim, Mohammed, PE
Jansons, John, PE
Johnson, Robert Irvin, PE
Johnson, Timothy Jack, PE
Judlin, Walter D., PE
Kapuranis, Jim John, PE
Kazemeini, Mohsen Nmi, PE
Keleher, Kara Dowe, PE
Kelly, Bryan Matthew, PE
Kenyon, Dean S., PE
Kingrey, William Ross, PE
Kinney, William Joseph, PE
Kloberdanz, Katrina Marie, PE
Kneipp, Leonard Edward, PE
Knickerbocker, Gerald C., PE
Kottel, Garry M., PE
Konick, Jerome Victor, PE
Krech, David Walter, PE
Krick, Gerald Edward, PE
Lalas, Vytautas Peter, PE
Lasseigne, Bryan Louis, PE
Lavaquial, Fernando P., PE
LeCorgne, William Reyes, PE
Legge, Joseph Douglas, PE
LeLeux, Bridget Oliva, PE
Lindsey, Jeffrey Waddell, PE
Long, Tiffany Godbey, PE
Lott, David James, PE
Mackey, Robert Eugene, PE
Mahendra, Harendra, PE
Mahone, Walter Key, PE
Mailen, Gary Allyn, PE
Maleh, Camille Antoine, PE
Manetti, Vincent, PE
Mangus, Carl William, PE
Marsalone, Lynn Anthony, PE
Masson, Edward David, PE
Matlock, David J., PE
May, William Paul, PE
Mayeaux, Paul S., PE
McCardle, Stuart, PE
Medina Hernandez, Ruben Emilio, PE
Merhi, Ismail N., PE
Metz, Lee Alan, PE
Miller, Stephen Michael, PE
Mills, Brian Jay, PE
Mirizzi, Scott A., PE
Mobley, Martin Owen, PE
Moore, Kenneth William, PE
Morath, Richard Henry, PE
Morris, Kelly Odessa, PE
Morris, Mark Kirwan, PE
Myers, Gary R., PE
Nelson, Mike Jay, PE
Noah, Lewis Raymond, PE
Norris, James William, PE
Norwood, Ronald L., PE
O'Donnell, William Robert, PE
Oberholtzer, Gerald Francis, PE
Oliver, Jason Paul, PE
Orillion, Alfred G., PE
Osborne, Thomas Michael, PE
Osburn, Michael J., PE
Osterloh, Frederick Vernon, PE
Otto, Keith D., PE
Padron, Dennis V., PE
Pagan, Ronald C., PE
Palaz, Thomas Anthony, PE
Palmer, Ronnie D., PE
Parsons, Antony Cozart, PE
Peck, James George, PE
Pettigrew, Christopher Scott, PE
Pinthieve, Robert, PE
Pittman, Adam Blake, PE
Postrozny, Henry Lawrence, PE
Prejean, Wilton Dale, PE
Putnam, Eric Lynn, PE
Radford, John David, PE
Reagan, Thomas Dale, PE
Richard, Donner Allen, PE
Richards, Steven R., PE
Richardson, Aimee A., PE
Ristroph, John H., PE
Robbins, Irving M., PE
Rochelle, Donnie Joseph, PE
Rochelle, William Richmond, PE
Roman, Pablo Antonio, PE
Romig, Leaman Mark, PE
Rona, Donna C., PE
Roussel, Herbert Joseph, PE
Ruiz, Demetrio Roberto, PE
Runyan, Daniel B., PE
Saxton, Daniel Grey, PE
Schaeffer, Gary J., PE
Schlag, Kenneth Tracy, PE
Sells, John Nelson, PE
Shaaban, Khaled Salah, PE
Shively, James William, PE
Simonsen, Richard Bruce, PE
Simpson, Stacey Housley, PE
Smith, Joshua David, PE
Smith, Peter Matthew, PE
Smith, William Edward, PE
Spencer, Kenneth Earl, PE
Squires, Robert G., PE

Stacy, Edgar Allen, PE
Stephenson, Mark A., PE
Strozik, Joseph Clinton, PE
Tahiliani, Jamnu Hariram, PE
Thompson, John Smith, PE
Thompson, William Lamar, PE
Tolle, Michael O., PE
Tosorian, Arek A., PE
Town, Albert Hays, PE
Trant, James Edward, PE
Troup, David W., PE
Troupe, Donald Eugene, PE
Tschantz, David Patrick, PE
Van Wagenen, Walter Coney, PE
Velivasakis, Emmanuel E., PE
Wagers, William Charles, PE
Walker, Johnnie P., PE
Wall, William Gregory, PE
Wauford, J. Roy, PE
Weinigg, James Dennis, PE
Welshons, Kenneth K., PE
Williams, Bivins Hicks, PE
Wilson, William W., PE
Winer, Harley Stanford, PE
Wood, John L., PE
Wouters, Jeffrey Paul, PE

ENGINEERING FIRMS

Allied Consulting Engineering Services, Inc., EF
American Engineering Associates - Southeast, P.A., Inc., EF
ATSI, Inc., EF
Avery Island Technologies, LLC, EF
Bailey Land Group, Inc., EF
Balance Consulting, Inc., EF
C. Faulkner Engineering, LP, EF
Casbarian Engineering Associates, LLC, EF
Central Design Group II, LLC, EF
Chevron Energy Solutions Company, A Division of Chevron USA, Inc., EF
E-W Associates, Inc., EF
Effective Project Corporation, EF
Engineering & Geomatic Consultants, LLC, EF
Engineering Plus of East Mississippi, Inc., EF
Engineers Northwest, Inc., P.S., EF
Enviro One, LLC, EF
ESI Consultants, Ltd., EF
Gaunt Engineers, Inc., EF
Hayman Residential Engineering Services, Inc., EF
Hugh Bailey Engineering, LLC, EF
Indigo Engineering Group, LLC, EF
Klinar Engineering, LLC, EF
L'Acquis Consulting Enterprises Indianapolis, LLC, EF
L. Abraham McKee Engineers & Contractors, Inc., EF
Marsalone Engineering Group, Inc., EF
PE Alliance, LLC, EF
Power and Controls Engineering, LLC, EF
Pyburn & Odom MCA, LLC, EF
Red Dot Corporation, EF
Robert M. Stafford, Inc., EF
Robert W. Gray, III, PE, LLC, EF
Ross & Baruzzini, Inc., EF
SNC-Lavalin Engineers & Constructors, Inc., EF
Southland Engineering Systems, Inc., EF
Steelplanit, LLC, EF
TCI Architects/Engineers/Contractor, Inc., EF
The Purdy Consultants, EF

SPONSOR PROVIDERS

Armstrong Pumps, CPD
CE Education, LLC, CPD
East Jordan Iron Works, Inc., CPD
Green Energy Engineering, Inc., CPD
Groth Equipment Corporation of Louisiana GROQUIP, CPD
St. Tammany Parish Government, CPD

PRESIDENTIAL PRIVILEGE

Craig D. Dooley, PE



Craig D. Dooley, PE
Louisiana Engineering Society President

In order to promote engineering licensure, I think the following legislation should be proposed: use the tax credit concept to attract the movie industry to Louisiana for the engineering profession. Each company or firm that has a registered Louisiana engineering intern employed, that company or firm would get a tax credit of \$500 and each Louisiana registered professional engineer employed by the company or firm would get a \$2,000 tax credit. This is an "out of the box" thinking that is plausible.

I would like to thank the Lafayette chapter for doing a great job of hosting the Joint Engineering Society Conference

this year and making it a tremendous success. With that stated, I would like to remind everyone of the Multi-State Engineering Conference that will be held in Sandestin, Florida, June 28-30, 2015. At this meeting, Heather Klingman will be sworn in as the second female President of the Louisiana Engineering Society's history. Please welcome her and give her your support. Again, I would like to thank you for allowing me to serve you this year.

WELCOME NEW MEMBERS

Alexandria Chapter

Jessie Lachney, Individual Sustaining

Baton Rouge Chapter

Diana Day, EI Associate Member Under 30
Albert Y. Ayenu-Prah, PE Member
John P. Binion, PE Member
Bo Booty, PE Member
Jeffrey K. Cook, PE Member
Shane C. Crump, PE Member
Terry L. Dyer, PE Member
Angelle Latrice Forrest, PE Member
Corey R. Mayeaux, PE Member
Ronald R. Smith, PE Member
Waskey, Corporation Sustaining
WTAA Engineers, LLC,
Corporation Sustaining

Bayou Chapter

Victoria Nicolaica, EI Associate Member
Jacob P. Prosperie, EI Associate Member Under 30

Lafayette Chapter

Susan Daneshvar, PE Member
Warren R. Farmer, PE Member
John C. Hulin, PE Member
John A. LeBlanc, PE Member
Zachary R. Perkins, PE Member
Aaron J. Broussard, Student Member
Abbie A. Elkhansa, Student Member
Amelia Smith, Student Member

Lake Charles Chapter

Randal Liprie, PE Member
Jessica C. Trahan, Student Member

Monroe Chapter

George "Trey" W. Carpenter, EI Associate Member Under 30

New Orleans Chapter

Jarret Bauer, PE Member
Rama P. Bhattacharya, PE Member
Timothy P. Bonura, PE Member

Jacinta M. Gisclair, PE Member
Ross B. Gonzales, PE Member
Robert Alan Harris, PE Member
Andrew B. Hill, PE Member
Jeffery L. Lambert, PE Member
Ronald A. Mangipano, PE Member
Kelly J. McHugh, PE Member
Jens J. Nielsen, PE Member
Arthur Smith, PE Member
Raymond C. Soong, PE Member
Matthew C. Thomas, Student Member

Shreveport Chapter

Melinda C. Boncheff, EI Associate Member Under 30
Jason S. Hathorn, PE Member
Byron E. Trust, PE Member

Non-Resident

Sheldon Waters, PE Member
Stanton D. Clymer, Student Member

CALENDAR OF EVENTS

May 2015

- 1 LES Board Meeting, LES State Office, Baton Rouge, LA
- 7-10 MATHCOUNTS National Competition, Boston, MA

June 2015

- 12 Early Registration Deadline for LES Annual Meeting
- 28-30 Multi-State Conference, Sandestin Resort, Destin Florida

LES Vision Statement:

The Louisiana Engineering Society is the recognized advocate of all licensed engineers in the state of Louisiana.

LES Mission Statement:

The Louisiana Engineering Society serves to advance the engineering profession by:

Encouraging ethical and competent practice through licensure and legislative involvement.

Nurturing public awareness of engineers' contributions to society.

Growing the society through licensure & LES membership and public service.

Recognizing engineering achievements.

ALEXANDRIA CHAPTER

By Jennifer A. Gemar, PE

The state MATHCOUNTS competition was held on March 27th at the Country Inn & Suites in Pineville. This year one of our local winners, Jojo Deep with NSU Middle Lab School, placed 1st in the state competition and will go on to compete at nationals. As in previous years, the Alexandria Chapter hosted a dinner the evening before the competition for all the teams and coaches that were competing. Thanks to everyone who volunteered to make this event a success.

Our guest speaker for the March meeting was Mr. Ben Humphries with Delta Process. He reviewed energy savings for soft starters and VFDs. At our April meeting, Mr. Clark York of CONTECH Engineered solutions was our guest speaker and presented on LID Stormwater Management Solutions.

For the month of May, we will hold our last 2014 – 2015 chapter meeting (May 5th) as well as our Annual MATHCOUNTS Golf Tournament (May 8th). It will be a busy week. The golf tournament will be held at the Oak Wing Golf

Club. All proceeds derived from the golf tournament are used to defray the cost of hosting the annual regional and state MATHCOUNTS competition the following year. As always we appreciate everyone's involvement to help make this a success while having some fun. For our last chapter meeting we will have chapter elections followed by a presentation by Mr. Joey Baker from DIS-TRAN Packaged Substations. He will be presenting on the use of 3D Modeling Technology to advance innovations in the design and construction of high-voltage outdoor substations.

As we wrap up this 2014 – 2015 year I would like to thank everyone for their support and help through the year. I would also like to thank our volunteers, officers, chairmen, and presenters that gave so much of their time. It was a pleasure to serve the chapter.



BATON ROUGE CHAPTER

By Chad A. Bacas, PE

April showers bring May flowers certainly seems to hold true, based on the way my grass has grown. I'm sure the flowers will be here shortly! It seems like we just had the fireplaces burning, and now we have the AC units kicking. Our Past President March general meeting was a busy but exciting luncheon. We all enjoyed hearing from our local, dynamic guest speaker, Adam Knapp, CEO and President of the Baton Rouge Area Chamber, as he demonstrated how our region continues to grow. It's always encouraging knowing our region is on the cutting edge with the newest technology, and that our economy has become diversified from the traditional chemical and gas industry core. We also had the honor of introducing 15 past presidents of our LES Baton Rouge Chapter. It is interesting to point out that 4 work for the same consulting firm, and 2 are a father-son combination. We recognized new licensees with our LAPEL representatives, Chris Knotts and Alan Krouse, helping to introduce and congratulate 7 Engineering Interns, 8 Professional Engineers and 2 Professional Land Surveyors.

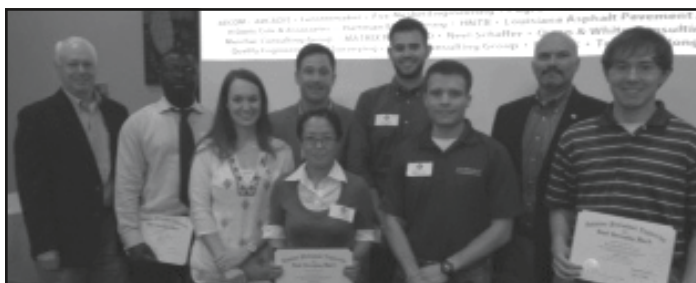
It has come to my attention that the term of Guy Leonard, the LES representative on the East Baton Rouge Parish/City of Baton Rouge Selection Board, has expired. We are extremely grateful for Guy's dedication and public service for this very successful and working selection process. We wish his successor great luck. Please note that this position is a two year term and has a few stipulations, three of which are that you must reside in East Baton Rouge Parish, be a licensed Professional Engineer and a member of LES.

With no general meeting held in April, we had two exciting events for everyone (members, students and guests) to join in. We had a great turnout for our 6th Annual Crawfish Boil at the Patio of Walk-On's on Burbank in which we served over 60

who enjoyed the eats and drinks! We also had a great turnout for our 25th Annual William A. Wintz Memorial Scholarship Golf Tournament. The tournament was held once again at the Copper Mill Golf Course with lunch and other food and cold beverages being served throughout the event. This is our chapter's most important event of the year, as the proceeds benefit the chapter's scholarship fund and LEF. Thanks to all the volunteers but especially Bert Wintz, Jacob Loeske and Alan Krouse for their behind the scenes work to make it happen.

Our last general membership meeting will be held jointly with the Baton Rouge Chapter of ASCE at Juban's Restaurant May 21st, as we hear from Mayor Kip Holden possibly for the last time. Kip has plans to move on to bigger and better things as his term and it's possible that he could be our next Lt. Governor. We appreciate his many years of service and his past guest appearances. We look forward to what could be his last state of the city/parish address, as his passion and enthusiasm can be contagious to all.

The Baton Rouge Chapter has an exciting new board for the 2015-16 LES year and I'm looking forward to serving as the Past-President. I know our own state award winning Younger Engineer, Jacob Loeske will do a tremendous job and provide some great new ideas, all while continuing our great traditions. On a final note, I would encourage all engineers to help mentor any engineers or future engineers by working with them possibly through a tutoring program, MathCounts or some other math and/or science program. It's always exciting to know that we have the power to encourage some of the brightest and possibly less fortunate to become great engineers!



BAYOU CHAPTER

By Stan Whitney, PE

The Bayou Chapter held our annual golf tournament on April 24th at the LaTour Golf Club in Mathews. The tournament was another sold out success for our chapter. We sincerely appreciate our sponsors and their continued support for the event year after year. A special thanks goes to Chad Hadaway, David Miller, and Tre Chauvin for organizing the event. We would also like to thank all of our tournament players for hanging in through the rain, we'll hope for better weather next year.



The Bayou Chapter would also like to welcome our area's newest Engineer Intern Mr. Jacob Prosperie who was presented his certificate at our April 15th licensing ceremony.

We welcomed Mr. Ted Fleming Chief Operating Office of Central Bidding at our last regular chapter meeting

held on April 1st. Mr. Fleming gave an informative presentation on the Central Bidding system used by public entities throughout the state. We appreciate Mr. Fleming's time meeting with us.

At this meeting our chapter also elected our officers for the upcoming year. These officers are as follows: President Chad Hadaway, Vice-President Stan Whitney, Secretary Treasurer Mike D'Angelo, and Mathcounts coordinator Melanie Caillouet.

Don't forget to mark your calendars for the 12th annual Multi-State Engineering Conference to be held this summer at the Sandestin Resort, June 28th – 30th. This event makes a great family vacation and is an excellent opportunity to earn your PDH. More information on this conference and all of the great services provided by LES can be found at www.les-state.org.



LAFAYETTE CHAPTER

By Ashley Simon, PE

With our 2014/2015 term coming to a close, I want to thank all members, officers, and volunteers for a wonderful year. I have enjoyed being the Lafayette Chapter President. It has been an honor. Thank you to Mark, Liesl, and Stephen, who all did their part to make this a great year. I would also like to thank Susan Frizzell for taking over as president for me while I was out on maternity leave. It took everyone's help to make this year such a success. Mike, Angie and Joey, thanks for all you do with MathCounts. And thank you to all who help behind the scenes as mentors, LES representatives at a higher level, sponsors, and volunteers.

The February luncheon meeting was held on the 19th at the Alternative Energy Research Center in Crowley. Dr. Zappi, Dean of Engineering at UL of Lafayette gave us a tour of the facility. The March luncheon meeting was held on the 25th with a very informative presentation by Shannon Stage, USGBC Louisiana Executive Director. He gave a great presentation on The Greening of Louisiana's Economy.



Our April meeting included the PE and EI Licensing Ceremony, LEF Scholarship Awards and MathCounts Banquet, which was an exciting time for all the honorees. We had a great turnout of members and guests at the event. Dr. Bowie gave a talk on ethics and presented the EI and PE certificates, Chris Richard presented the LEF scholarships and Mike Smith acknowledged our top regional Mathletes. The Petroleum Club Ballroom was filled with proud kids, parents, spouses, family members, and engineers.

Thank you to everyone again for this chance to serve you as Chapter President.



MONROE CHAPTER

By Jim Ellingburg, PE

The Monroe Chapter is wrapping up another successful year. At our April meeting, we recognized Sarah Patterson, E.I. and George Walter Carpenter, III, E.I. for their accomplishment in obtaining certification during our Bi-Annual Licensing Ceremony. After the ceremony, Mr. Scott Phillips, PE, PLS, who is one of our own members and a member of the Louisiana Professional Engineering and Surveying Board, presented our annual ethics topic. At our March meeting, Mr. Scott Mulinix presented "Innovative Wastewater Treatment Using Continuous Flow SBR."

Being a member of LES has several benefits, including being able to



attend these monthly meetings, two annual conferences, and the limitless networking opportunities at these events. Please consider inviting one of your colleagues to attend a future meeting

who may not be a member of the Monroe Chapter. If you are reading this and happen to be in Monroe or the surrounding area, then consider this as your open invitation to come and join us. You can contact me at (318) 387-2710 to get further details about membership and upcoming meetings.



SHREVEPORT CHAPTER

By T. Ryan Estess, PE, PLS

We had a great monthly meeting on April 8th at the Petroleum Club. We had nearly 50 in attendance. I'd like to thank Mr. J.D. Brown with Max Foote Construction for sharing his knowledge and experiences regarding "Construction Feasibility - Construction Engineering, Value Engineering, and Construction Issues when working on Large Projects. How to make your projects more effective when working with Owners, Contractors, and other Engineers."

I'd like to congratulate all the new Licensees in our chapter who were recognized at the meeting:

Jason Cottom, PE
Cody Colvin, PE
Michael Kelsch, PE
Corey Mitchel, PE
Harper Caraway, PLS

We also had three scholarship winners that were present at the meeting:

Seth Louviere, winner of the NSPE Hurricane Relief Scholarship
Parker Rogers, winner of the James and Margaret Mohr Civil Engineering Scholarship.
Jeff Boudreaux, winner of the LES Scholarship

Next month, we will be having our meeting on May 13th where Dr. Wang from Louisiana Tech giving a lecture. The

topic is still to be determined. A 1 hour PDH will be given for attendance, and it will be our last meeting until the Summer is over. Also, please RSVP. We appreciate everyone coming, but we had 26 RSVP's and 48 people show up. It caused the Petroleum Staff to scramble in order to be able to fit everyone.

I'd like to send out a special thanks to Paul Pratt with Chesapeake Energy Corporation for their generous \$2,500.00 sponsorship to the local and State wide Mathcounts Competition. Without their continued support, the Local and state wide Mathcounts competitions would be severely hampered.

I hope to see everyone on May 13th for our final meeting before summer break.



NEW ORLEANS CHAPTER

By Glenn Orgeron, PE, JD

Welcome to May—We have gotten past French Quarter Fest, Jazz Fest, April showers, and our Licensing Ceremony, and now we look forward to the State legislative session, more crawfish (!), graduations, summer vacations and our final Chapter meeting of the year!

Last month, we had our annual Spring Licensing Ceremony. This year, we held the event at Zea's Rotisserie on St. Charles Avenue in New Orleans. Originally, we had scheduled the event at Don's Seafood on Veterans Boulevard in Metairie, but the responses from new P.E.'s and E.I.'s was so great that we outgrew the space at Don's. We had a very nice dinner and Licensing Ceremony with Richard Savoie doing the honors for the new PEs and EIs; Mr. Savoie then followed with an informative and very well received Ethics presentation to remind everyone of how a very small minority of our engineers occasionally get themselves into trouble from a professionalism and ethics standpoint.

On May 20th, we will have our final meeting of the year and are slated to hear from DOTD and receive a briefing on the construction of the John James Audubon Bridge. The subject Bridge over the Mississippi River connecting Point Coupee and West Feliciana parishes at St. Francisville is the second longest cable-stayed span in the Western Hemisphere. The meeting will be held at the DOTD Regional Office in New Orleans. At the meeting, we will also conduct the election for the Chapter officers for next year. Nominated for office for 2015-16 are Robert Mejia, President; Roy Phelps, 1st Vice President; Nicholas "Nick" Musmeci, 2nd Vice President; Secretary/Treasurer, Bodin Hugger; Richard Van Wootten, Director; one Director slot remains open.

Also in May, a small group from our Chapter along with several Tulane engineering alumni will meet with Dean Altiero of Tulane School of Science and Engineering to discuss some very preliminary outline work the small group began on a proposed Tulane power systems certificate program. The meeting will provide an opportunity to review the proposal and possibly reorient some of the effort to ensure it coincides with the priorities of the

Tulane School of Science and Engineering. Dean Altiero conducted an April 28, 2015 Webinar on the "Future of the School of Science and Engineering" to discuss the school's priorities. For questions about the Webinar, contact clerderma@tulane.edu. Regrettably, the Webinar was to occur following the press deadline for this publication.



We continue to monitor the budgetary issues facing UNO and all of the State universities as we follow the Legislative session. We have tried to liaise with a number of legislators from the area to remind them of the importance of properly funding higher education. As individual engineers who may know some of the area legislators, please do what you can to let them know that we cannot build or maintain an educated workforce if our universities are not adequately funded. Draconian cuts to education funding are not the way to either balance the State budget nor are they the way to build a technically educated workforce for the 21st century. We fully support UNO President Fos in his quest to seek adequate funding for all of the State public universities including UNO, and for Dr. Macari, Dean of the UNO College of Engineering, for his plans to expand the engineering offerings so as to prepare our future engineers for the 21st century and beyond.

On the State legislative front, we are monitoring SB 156 which could provide a waiver in certain narrow circumstances for individuals to obtain a P.E. certificate without taking the F.E. exam. LES has proposed language to narrow the scope of the legislation and to provide LAPELS with discretion to determine whether someone is truly qualified. Additionally, we are looking into a proposed Coast Guard Rule (USCG-2012-0061-0001) involving Deepwater Ports which would weaken certain requirements for a professional engineer as part of the licensing process for deepwater ports. The proposed Rule, according to NSPE, would allow unlicensed engineers to submit design and construction plans during the licensing process.



MEET HEATHER R. KLINGMAN, PE

Heather R Klingman, PE, has served the Louisiana Engineering Society (LES) at the local and state levels. She has been an active member of LES since 1997 when she joined as a student member during college. Heather is currently serving on the Board of Directors as the 1st Vice President and has previously served as the 2nd Vice President, Secretary-Treasurer, a two year term as State Director from 2010-2012, and as the President of the LES Bayou Chapter from 2008 - 2010. Heather remains an active member of the Bayou Chapter and continues to volunteer her time as needed for the annual golf tournaments and Mathcounts competitions. In 2010 and 2011, Heather served as co-chairman of the local Mathcounts Competition. She also served as Chairman for the 15th JESC Conference in 2011. Heather is currently serving as Vice Chairman of the Continuing Professional Development Committee, the Liaison Committee with the State Board of Registration, the Membership Committee, and the Scholarship Committee, and as an ad hoc member of the Long Range Planning Committee. She has previously served on the LEF Board, the

LES Honors and Awards Committee, and the Legislative Committee.

Heather obtained her Bachelor's Degree in Civil Engineering from the University of Southwestern Louisiana in 1999 and is currently registered as a professional engineer in Louisiana. Heather is a Senior Associate at Duplantis Design Group in Thibodaux, where she has worked as a consulting engineer in the private and public industries since 2000. In addition to the Louisiana Engineering Society, Heather is a member of the American Society of Civil Engineers, and the National Society of Professional Engineers.

Heather is a native of Thibodaux, Louisiana, where she lives and works. She is married to Kenneth Klingman and has two sons, Collin, 11 and Owen, 9.



Heather R. Klingman, PE
Incoming Louisiana Engineering Society President

BALLOT TO ELECT LES MEMBERS

Act 721 passed in the 1975 Legislature amended Chapter 10 to Title 38 of the Louisiana Revised Statutes of 1950 by adding thereto a new Part VII, Selection of Professional Services for Public Contract. Three Boards – Architect, Engineer and Landscape Architect Selection – are authorized under this Act. Each board selects persons or firms to perform certain professional services for public contract.

The Act refers to the Louisiana Engineering Society, specifying the following: The Louisiana Engineers Selection Board shall be composed of six members. Two members shall be named in an election conducted by the Louisiana Engineering Society at which all properly licensed engineers residing in the State of Louisiana may vote for positions to be filled. LES has two positions to fill this year, one term ending June 30, 2016, and one ending December 31, 2016. The LES Nominating Committee nominates Ali M. Mustapha, P.E. for the July 1st position and Patrick Furlong, P.E. for the January 1st position.

Each Louisiana Registered Professional Engineer working and living in the State is eligible and urged to vote. Space on the ballot is provided for write-in candidates. A write-in candidate must be a LA registered Professional Engineer and must have agreed to serve if elected. No employee or stockholder shall be eligible to receive agency contracts during the term of his service, and for a period of six months thereafter.

LES ENGINEERS SELECTION BOARD BALLOT

1. Mark and return to LES, 9643 Brookline Ave., Ste. 116, Baton Rouge, LA 70809, by June 30, 2015. Late ballots will not be accepted.
2. Make sure your name and address are on the envelope that forwards the ballot to LES. Ballot signature is not required.

Vote for One Candidate in Each Position

POSITION ONE

(Term July 1, 2015 – June 30, 2016)

☐ Ali M. Mustapha, PE

☐

For Write-in Candidate

POSITION TWO

(Term January 1, 2016 – December 31, 2016)

☐ Patrick Furlong, PE

☐

For Write-in Candidate

MATHCOUNTS® COMPETITION

Becky Johnson, PE

The 2015 Louisiana State MATHCOUNTS Competition was held in Pineville March 27, 2015. There were 30 schools that participated from around the state, totaling 107 students.

Participating schools were:

A.E. Phillips Laboratory School (Monroe Chapter)
Bayou Community Academy (Bayou Chapter)
Belle Place Middle School (Lafayette Chapter)
Bishop Noland Episcopal Day School (Lake Charles Chapter)
Boyett Junior High School (New Orleans Chapter)
Caddo Middle Magnet (Shreveport Chapter)
Cedar Creek School (Monroe Chapter)
David Thibodaux STEM Magnet Academy (Lafayette Chapter)
DeRidder Junior High School (Lake Charles Chapter)
Evergreen Junior High School (Bayou Chapter)
F.K. White Middle School (Lake Charles Chapter)
Glasgow Middle School (Baton Rouge Chapter)
Grace Christian School (Alexandria Chapter)
Greenacres Middle School (Shreveport Chapter)
Haynes Academy for Advanced Studies (New Orleans Chapter)
Houma Junior High School (Bayou Chapter)
Larose-Cut Off Middle School (Bayou Chapter)
Natchitoches Magnet School (Alexandria Chapter)
NSU Middle Lab School (Alexandria Chapter)
Our Lady of Fatima School (Lafayette Chapter)
Our Lady of Mercy School (Baton Rouge Chapter)
Patrick F. Taylor Science and Technology Academy (New Orleans Chapter)

Paul Breaux Middle School (Lafayette Chapter)
River Oaks School (Monroe Chapter)
Rusheon Middle School (Shreveport Chapter)
S.J. Welsh Middle School (Lake Charles Chapter)
Southfield School (Shreveport Chapter)
St. Margaret Catholic School (Lake Charles Chapter)
St. Thomas More Catholic School (Baton Rouge Chapter)
W.W. Lewis Middle School (Lake Charles Chapter)

The top 12 individuals who competed in the Countdown Round were:

Srikhar Chilukuri - Caddo Middle Magnet School (Shreveport Chapter)
JoJo Deep - NSU Middle Lab School (Alexandria Chapter)
Davis Glen Ellis - A.E. Phillips Laboratory School (Monroe Chapter)
Maryn Matthews - St. Thomas More Catholic School (Baton Rouge Chapter)
Amanda Meng - A.E. Phillips Laboratory School (Monroe Chapter)
Neelamber Mondale - Haynes Academy (New Orleans Chapter)
David Paul Duhon - F.K. White Middle (Lake Charles Chapter)
Shreya Reshamwala - Our Lady of Mercy School (Baton Rouge Chapter)
Grace Sun - Caddo Middle Magnet (Shreveport Chapter)
Austin Thombs - Boyett Junior High (New Orleans Chapter)
Anusha Zaman - Glasgow Middle School (Baton Rouge Chapter)
Suraj Zaveri - Haynes Academy for Advanced Studies (New Orleans Chapter)

Top 4 individuals and LA representatives for the National Competition in Boston, MA, on May 8th are:

4. Davis Glen Ellis - A.E. Phillips Laboratory School (Monroe Chapter)
3. Suraj Zaveri - Haynes Academy for Advanced Studies (New Orleans Chapter)
2. Neelamber Mondale - Haynes Academy for Advanced Studies (New Orleans Chapter)
1. JoJo Deep - NSU Middle Lab School (Alexandria Chapter)

The coach from Haynes Academy for Advanced Studies (New Orleans Chapter), Ms. Karen Impastato, will be the Louisiana team coach.

The top 2 countdown round winners were:

2. Suraj Zaveri - Haynes Academy for Advanced Studies (New Orleans Chapter)
1. JoJo Deep - NSU Middle Lab School (Alexandria Chapter)

The Mathbee team winner was:

NSU Middle Lab School (Alexandria Chapter)



CONGRATULATIONS TO ALL OF THESE STUDENTS AND TO ALL OF THE PARTICIPANTS

MATHCOUNTS could not be put on without the dedicated help of many volunteers and support from the community. A big thank you to the following volunteers and sponsors:

Our Major Sponsors:

Shell Oil Company
Louisiana Engineering Society

Other Sponsors:

Allen J. Harris Co., Inc.
Badeaux Engineers, Inc.
BALAR Associates, Inc.
C.E.C., Inc.
CETCO Energy Services
CGS Engineering, Inc.
Coyle Engineering Co., Inc.
CSRS, Inc.

Denmon Engineering Co.
Domingue, Szabo & Associates, Inc.
Dubroc Engineering, Inc.
Mohr and Associates, Inc.
D.W. Jessen & Associates, Inc.
Environmental Technical Sales, Inc.
Forte and Tablada, Inc.
Fugro Chance, Inc.
Huval & Associates, Inc.
Lazenby & Associates, Inc.
M & E Consulting, Inc.
Manchac Consulting Group
Neel-Schaffer, Inc.

Providence / GSE Associates, LLC
Sellers & Associates, Inc.
SJB Group
Stokes & Spiehler

LES Alexandria Chapter
LES Baton Rouge Chapter
LES Bayou Chapter
LES Lafayette Chapter
LES Lake Charles Chapter
LES Monroe Chapter
LES New Orleans Chapter
LES Shreveport Chapter

You're Invited!

to the 12th Annual

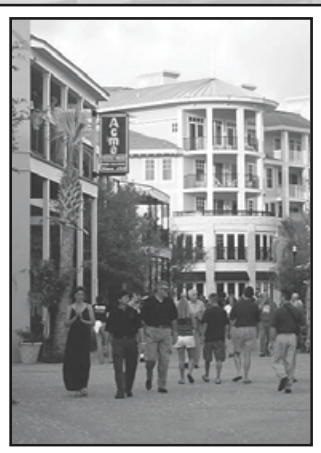
MULTI-STATE ENGINEERING SOCIETY CONFERENCE at the beautiful, family-friendly



Sandestin[®]
Golf and Beach Resort

Destin, Florida • June 28-30, 2015

*All NSPE and State Society members are welcome
to attend at the member rate and will get up to
12 hours of continuing education credits!*



This Multi-State Engineering Conference marks our 7th return to **Sandestin Resort** and is expected that the Conference will be attended by hundreds of professional engineers from throughout Alabama, Louisiana, Georgia, Florida and Mississippi. The attendees will include Chemical, Civil, Mechanical, Electrical, and Safety Engineers. These engineers represent private practice, industry, government, education, and construction.

We are looking for individuals that would like to conduct a seminar on an engineering related topic of your choice at the Conference. Each 50-minute seminar will provide one Professional Development Hour (PDH) per attendee to meet their educational requirements for licensure. The general guidelines for each PDH seminar specify that each presentation will improve the development of a professional engineer or land surveyor to safeguard life, health, property, and promote the public welfare. The conference registration fee is complimentary and presenters are welcome to attend other conference seminars, however we ask that you complete a registration form for headcount purposes.

We would also like to extend an invitation to your organization to display at the **Multi-State Engineering Conference**. See the enclosed Booth Reservation Form for pricing. Additional representatives who are also working the booth are allowed; however, everyone must purchase tickets for events and food functions. Please consider participating in our Exhibitor Meet & Greet on Sunday, June 28th from 4:30PM – 6:00PM. Each exhibitor will be given a chance to showcase their company and give away a door prize provided by the exhibitor. We have limited booth capacity and are planning on 50+ booths this year!

Exhibitors and speakers are encouraged to become sponsors of the **Multi-State Engineering Conference**. The levels of sponsorship are listed on the enclosed Sponsorship Form, and in return for your support, you will receive recognition at the Installation Banquet. Also, your company name will be prominently displayed as a sponsor throughout the conference, listed in the program and published in the **Louisiana Engineer & Surveyor Journal**, which has a circulation of over 30,000 readers. If you are interested, fill out the enclosed Sponsorship Form and return it to the LES State Office.

Here is your chance to have fun and network at the same time! **Day One** will start with a Breakfast for all attendees, including a fun team building exercise. That evening we will have our typical Exhibitor Meet & Greet with our famous caricature artist, and have added board games for the children while the adults play a Trivia Game with the Exhibitors. **Day Two** will end with beach volleyball and hot dogs, hamburgers and s'mores around a bonfire! Everyone is invited to join the fun!

For more information on any of these events, please call Brenda Gajan, LES Executive Director at (225) 924-2021 or visit the LES website at www.les-state.org.

More Amenities and More Fun at Sandestin Golf and Beach Resort

No one else on the Emerald Coast offers the accommodations and activity choices you'll find at Sandestin. When you book directly with Sandestin there are benefits you may not receive if you were to book with other travel websites or property management companies.

To enjoy the full experience and value of an ultimate Northwest Florida coastal resort, book with Sandestin. There is no substitute when it comes to the added value you will enjoy. Discover the wonderful amenities you'll receive when you book your stay directly with us.

Resort Amenities	Rental Through Sandestin	Other Rental Companies
Bicycle Rental*	FREE	\$20 for 4 hours
Kayak and Boogie Board Rental*	FREE	Kayak \$30/hr Board \$10/hr
4 Pools w/ Towel Services	FREE	N/A
Resort Transportation (year round)	FREE	\$500/year
Tennis Court Time*	FREE	\$17/person/hr
Fitness Center*	FREE	\$15/day
Beach Setup Rental	\$40/day \$75/2 days	\$55/day \$100/2 days
Golf Rates (Rates starting at prices shown. Rates vary seasonally.)	Links - \$50 Baytowne \$59 Raven \$79 Burnt Pine \$119	Links \$56 Baytowne \$64 Raven \$88 Burnt Pine - No Access
Waverunner Rental	\$95	\$110
Parasail Rides - Double / Triple	\$190 / \$240	\$200 / \$255
Club KZ - Supervised children's activities including meals	Daytime \$55/child Evening \$65/child	Daytime \$65/child Evening \$75/child
Putt-Putt Course	\$10/person	\$12/person

To book your stay with us, call 800.320.8115 if you have questions or would like to book by phone. To book your reservation online, visit www.sandestin.com.

* Sandestin Rental Guests receive the following complimentary daily amenities: Two (2) four hour bike use, Kayaks and Boogie Boards, one hour Tennis Court time per unit and access to the Fitness Center for adults.



Sandestin®
Golf and Beach Resort

800.320.8115 | groupres@sandestin.com | www.sandestin.com/amenities

12th Annual Multi-State Engineering Conference

Sandestin Resort, Destin, FL, June 28-30, 2015

Saturday , June 27, 2015

ROOM	JASMINE
5:00 PM	2015 LES ORIENTATION & PLANNING MEETING
6:00 PM - TILL	LES BOARD MEETING
	LEF BOARD MEETING

Sunday, June 28, 2015

8:00 AM—4:30 PM	REGISTRATION & EXHIBIT HALL OPEN IN AZALEA FOYER/AZALEA CORRIDOR
8:30 AM—9:30 AM	BREAKFAST/GENERAL SESSION IN AZALEA FOYER

ROOM	AZALEA I	AZALEA II
9:30 AM—10:20 AM	Brandon Lomasney Concrete Waterproofing by Crystallization	Mike Clements Advances in Geosynthetic Technology in Civil Engineering Applications
10:30 AM—11:20 AM	Greg Sepeda, PE The Basics of Risk Management	Mohamad Hussein, PE Engineering Considerations for the Prepared Effective Use of Dynamic Pile Testing Results
11:30 AM — 12:30 PM	Brian O. Buckel, PE Huey P. Long Bridge Widening & The Three Big Lifts Lunch N' Learn	Philip M. Zimmerman, PE Radically Enhancing Engagement, Productivity, and Loyalty of Millennial Generation Employees Lunch N' Learn
12:30PM—1:00 PM	BREAK IN EXHIBIT HALL	
1:00 PM—1:50 PM	Ben Humphries Water & Wastewater Design & Operational Efficiency Improvements through Variable Frequency Drive & Cellular Based Scada Systems	Jeffrey F. Speck, PE Improving the Performance of Concrete with Integral Curing
2:00 PM—2:30 PM	BREAK IN EXHIBIT HALL	
2:30 PM—3:20 PM	Arthur Smith, III, PE World Record Breaking 115kV HDD Installed Underground Transmission Line Feeding Orange Beach	Chris Knotts, PE Professionalism & Ethics
3:30 PM—4:20 PM	Danny Gierhart, PE Asphalt Parking Lot Design: Best Practices	Matt Stubblefield Uses of Portable Traffic Signals
4:30 PM—6:30 PM	EXHIBITOR MEET & GREET IN EXHIBIT HALL (CASH BAR & HORS D'OEUVRES)	

Monday, June 29, 2015		
7:00 AM—8:00 AM	CONTINENTAL BREAKFAST IN AZALEA FOYER/AZALEA CORRIDOR	
7:00 AM—11:30 AM	REGISTRATION & EXHIBIT HALL OPEN IN FOYER/AZALEA CORRIDOR	
ROOM	AZALEA I	AZALEA II
8:00 AM - 8:50 AM	Oliver Delery, PE New Products for Infrastructure & Coastal Restoration - Kenner Chain Wall & Oyster Break	Clark A. York, PE Buried Bridge Innovations: Plate & Precast Structures
8:500 AM—9:15 AM	BREAK IN EXHIBIT HALL	
9:15 AM— 10:05 AM	Ali Mustapha, PE Levee Operations, Maintenance & Safety	Mitchell LeBas, PE Protecting our Drinking Water
10:05 AM– 10:30 AM	BREAK IN EXHIBIT HALL	
10:30 AM—11:20 AM	Spencer Tuell, PE Solutions for Wastewater Structure Protection & Rehabilitation	Steven B. Loeb Delay Claims Against Design Professionals
11:20 AM—1:00 PM	GENERAL MEMBERSHIP LUNCHEON IN AZALEA III	
2:00 PM—6:00 PM	GOLF TOURNAMENT	
6:00 PM—8:00 PM	Beach Volleyball & Bonfire	
Tuesday, June 30, 2015		
7:30 AM—8:30 AM	CONTINENTAL BREAKFAST IN AZALEA FOYER/AZALEA CORRIDOR	
7:00 AM—11:30 AM	REGISTRATION & EXHIBIT HALL OPEN IN AZALEA CORRIDOR	
ROOM	AZALEA I	AZALEA II
8:00 AM— 8:50 AM	Richard A. Moeller Understanding the Dynamics of Risk in the A/E Industry	Edgar Benoit, PE Overview of the National Electrical Safety Code for the Non-Utility Engineer
8:50 AM—9:15 AM	BREAK IN EXHIBIT HALL	
9:15 AM— 10:05 AM	Steve Greaber Down drag Effects on Pile Supported Foundations in Compressible Soils	Gregory Quist, Ph.D Sifting Through the Avalanche of Big Data - Turning Data Into Decisions for your Benefit
10:05 AM– 10:30 AM	BREAK IN EXHIBIT HALL	
10:30 AM—11:20 AM	Kerry Koressel Vortex Flow Insert: A Green Solution for Odor & Corrosion in Sewer Drops	Billy Moore, PE Using ASCE 38-02 to Save Time & Money with Utility Coordination
11:30 AM—1:00 PM	CAMELLIA 1 & 2	
	MULTI-STATE INSTALLATION LUNCHEON	

12TH ANNUAL MULTI-STATE ENGINEERING CONFERENCE

SANDESTIN RESORT, DESTIN, FL

JUNE 28-30, 2015

Name: _____

Company Name: _____

Mailing Address: _____

City/State/Zip: _____

Phone: _____ Fax: _____

E-mail: _____

Badge Name: _____

Spouse/Guest, if attending: _____

Please indicate if you are a member of NSPE Yes _____ No _____

Spouses are invited to attend the conference with no registration fee, but are required to register and pay for ticketed events. Students must show I.D. at registration. Please check every event that you plan to attend.

On-time registration deadline is May 30, 2015

Please check every event that you plan to attend.

Event	How many attending	Amt.	Late Fee After 5/30	Total
NSPE/State Society Member Registration <i>Includes attendance to all seminars (excluding Lunch N' Learn) Speakers may attend seminars with no registration fee</i>	_____	\$210	+\$50	_____
Spouse Registration: <i>Spouses do not have to pay a registration fee, however, they must pay for ticketed events listed below.</i>	_____	N/C	N/C	_____
Non-Member Registration: <i>Fees include one year membership in Society of your choice</i>	_____	\$365	+\$50	_____
Student Member Registration: <i>Must show I.D. at check-in</i>	_____	\$35	+\$25	_____
Sunday Breakfast/General Session	_____	\$10	+\$10	_____
Sunday Lunch N' Learn Seminar	_____	\$10	+\$10	_____
Sunday Exhibitor Meet & Greet: <i>(4:30 PM – 6:30 PM) Must be present to win door prizes</i>	_____	\$10	+\$10	_____
Monday Continental Breakfast	_____	\$5	+\$10	_____
Monday General Membership Luncheon	_____	\$20	+\$10	_____
Monday Beach Volleyball/Bonfire	_____	\$10	+\$10	_____
Monday Golf Tournament at The Links: <i>Handicap: _____ Length of drive: _____ Golf Tournament Information: 4-man scramble, fee includes green fees & cart fees. Feel free to bring promotional items to be given away as gifts. For golf questions please contact John Plaisance at jplaisance@jwayneplaisance.com</i>	_____	\$100	+\$15	_____
Tuesday Continental Breakfast	_____	\$10	+\$10	_____
Tuesday Installation Luncheon	_____	\$40	+\$10	_____

Total Payment Enclosed \$ _____

RESORT AMENITIES

The Village of Baytown Wharf is reminiscent of a 1920s fishing village, with hints of the Deep South, Louisiana, Old Florida and the Keys. The wharf is located on 28 acres of pristine, bay front property with 42 shops including restaurants, galleries and nightclubs. Complimentary amenities include beachside attendants who will carry your things down to the beach, an hour of tennis each day, canoe or kayaking, bikes, boogie boards and fishing in their stocked, freshwater lakes. The golf tournament will be played on the Links Golf Course, and Kid Zone offers tons of fun for children ages 4-12.

Beach Volleyball & Bonfire. Join us for glow in the dark Beach Volleyball on the beautiful Sandestin Beach. We will serve hot dogs and hamburgers and to top off the night, s'mores around the bonfire. The kids will enjoy the waterslide and spacewalk, too! Make plans now to join the fun!

PLEASE CHECK: VISA_____ MasterCard_____ Discover_____ *(WE DO NOT ACCEPT AMERICAN EXPRESS)*

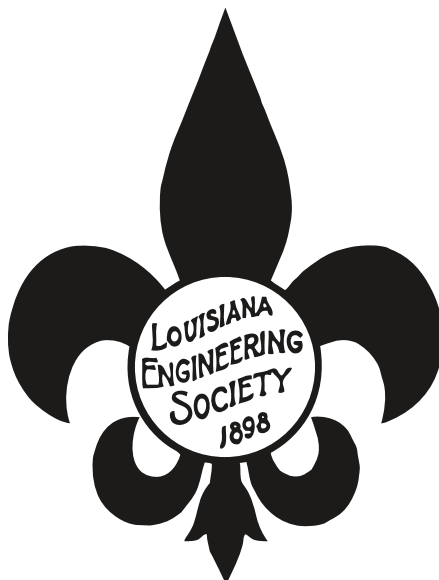
CARD NO.:_____ EXP. DATE: _____

SIGNATURE:_____

Make Checks payable to "Louisiana Engineering Society." LES is the coordinating society for the 2015 meeting. Fax credit card information to (225) 924-2049. For further information contact: LES (225) 924-2021 or visit our website at www.les-state.org.

Registration fees must accompany this form. No refunds after May 30, 2015.
Register by mail w/check, go online or fax w/credit card information to:

Louisiana Engineering Society
 9643 Brookline Avenue, Suite 116
 Baton Rouge, LA 70809
 Phone: (225) 924-2021 Fax: (225) 924-2049
 Email: les@les-state.org
www.les-state.org





Book online: <http://www.Sandestin.com/22Y0SQ.aspx>

Sandestin® Group Reservations

Call 800.320.8115 or Fax: 850.267.8221

DUAL-STATE ENGINEERING SOCIETY MEETING 2015

Saturday, June 27 - Sunday, July 5, 2015

GROUP CODE: 22Y0SQ

Name _____ Number in Party: Adults _____ Children _____

Company Name _____ Business Phone _____

Address _____ E-Mail _____

City _____ State _____ Zip _____

Sharing With _____

Arrival Day/Date _____ Departure Day/Date _____

Please select method of payment:

Credit Card # _____ Exp. Date _____ Signature _____

Authorization # _____ (located on the reverse side of card) Check # _____

Your cut-off date for reservations is **May 26, 2015**, after which rooms will be sold on a space-available basis.

ACCOMMODATIONS AND RATES

A deposit of one night's room rate is required to secure rooms.

All room rates quoted **DO NOT** include 12% fees and 12% taxes.

Please circle your preferred accommodations. All requests are subject to availability at time booking request is received.

Any other type of accommodation besides what is in your block will vary in cost depending on location.

<u>Accommodation</u>	<u>Rate</u>	<u>Accommodation</u>	<u>Rate</u>
Beachside Studio	\$ 279.00	Lakeside 2 Bdrm	\$ 269.00
Beachside 1 Bdrm	\$ 329.00	LeCiel - Guest Room - Resortview	\$ 144.00
Beachside 2 Bdrm	\$ 459.00	LeCiel - Guest Room - Bayview	\$ 159.00
Westwinds 1 Bdrm	\$ 339.00	LeCiel - 1 Bdrm Suite	\$ 199.00
Westwinds 2 Bdrm	\$ 479.00	Village - Studio	\$ 176.00
Southside 3 Bdrm	\$ 389.00	Village 1Bdrm	\$ 197.00
Beachwalk 2 Bdrm	\$ 285.00	Grand Complex Studio	\$ 186.00
Luau Studio	\$ 186.00	Grand Complex 1 Bdrm	\$ 206.00
Luau 1 Bdrm	\$ 206.00	Grand Complex 2 Bdrm	\$ 319.00
Luau 2 Bdrm	\$ 266.00	Bayside 2 Bdrm	\$ 218.00

The Grand Complex consists of accommodations in the Grand Sandestin®, Lasata, Bahia, and Elation

IF ONE OF THE ABOVE ROOM TYPES ARE UNAVAILABLE ON-LINE, PLEASE CALL OUR RESERVATIONS DEPARTMENT AT 800-320-8115 TO CHECK FOR AVAILABILITY.

Deposit is refundable in the event of individual room cancellation, provided notice is received by Sandestin® seven days prior to scheduled arrival date.

BOOK ONLINE AT www.Sandestin.com and enter group code 22Y0SQ





Protecting your
community's
drinking water
 has never been more important
than NOW.

The Drinking Water Revolving Loan Fund (DWRLF) is providing low interest loans and technical assistance to public water systems in Louisiana.



DRINKING WATER
 REVOLVING LOAN FUND
A PROGRAM OF THE DEPARTMENT OF HEALTH AND HOSPITALS



Learn if your water system is eligible, and how to apply to today!

Visit us at www.facebook.com/DrinkingWaterRevolvingLoanFund
 or www.dhh.la.gov/DWRLFPSGuidance.



THE SPEC SHEET

Daniel E. Mobley, CAE, *Executive Director*
American Council of Engineering Companies of Louisiana



Daniel E. Mobley, CAE

WHY TRANSPORTATION IS COOL AGAIN

“Our roads suck.”

That’s not me talking. That’s Louisiana State Treasurer John Kennedy, the Oxford-educated attorney with a gift for grabbing headlines. Kennedy was quoted in an article in the April 26 Baton Rouge Advocate on the upcoming legislative battle over transportation issues. In those three words, Kennedy crystallized a lot of the arguments ACEC/L and others have been making for years, but he did so in a way that appealed to the populist mindset that has kept the vintage “no new taxes” mantra relevant in a state crying out for more transportation investment.

Why is this important? Because for the first time in the post-Katrina era – despite having a nationally ambitious governor who vows to veto any tax increase, despite a ridiculous \$1.6 billion budget deficit and despite 2015 being an election year – it may be a fair fight this year. The Louisiana Legislature may actually put more public investment in transportation. Suddenly, being in favor of more money for transportation seems like the politically cool thing.

But this “sudden” development was a long time coming. It didn’t happen overnight. The American Council of Engineering

Companies of Louisiana has been doing battle at the capitol for years, tracking bills, helping to draft legislation and making sure our member firms’ voices are being heard. This is a critical year because what happens in the legislature can help define the issues for the fall elections. And as we have done for years, ACEC/L will be in the arena, supporting bills that further our members’ interest and opposing those bills that can do harm.

One big boulder, Rep. Terry Landry’s bill to cap state police diversions from the Transportation Trust Fund, already has easily sailed through the House and, as of this writing, is on its way to the Senate with no visible opposition. HB 208 would put a \$40 million ceiling on the diversions for the 2016 fiscal budget, \$25 million in 2017 and \$10 million thereafter. Compare that to the \$65-\$70 million a year that has been diverted, and all of the sudden, you’re talking real money.

Other bills ACEC/L is watching include:

SB 66 - Smith, Jr., G., extends time for ports to use the design-build method on certain construction projects;

SB156 - Martiny, D, provides for good cause, LAPELS may waive the fundamentals of professional engineering exam;

SB162 - Smith Jr., G, authorizes construction management at risk pilot program limited to projects estimated to cost \$25 million or more.

For a complete view of the Bills,
you can view them at www.legis.la.gov.

ACEC LOUISIANA AFFILIATE MEMBERS

ACEC Business Insurance Trust
ACEC Life/Health Insurance Trust
Alexander & Sanders
BFM Corporation, LLC
Boh Bros. Construction Co., LLC
ConTech Engineered Solutions, LLC
CROM Corporation
CxA Services, LLC
Cycle Construction Co., LLC
Delta Process Equipment
Environmental Technical Sales, Inc.
ExactSource
Hanson Pipe & Products, Inc.
HUB International Gulf South
Iberia Bank
LA Asphalt Pavement Association
Mapping & Surveying, LLC
Regions Bank
Whitney Bank

IN MEMORY

Robby Cangelosi was a member of the ACEC of Louisiana Board of Governors from 2011 – 2015 and was an inspiration to the engineering community both professionally and personally.



A life that touches others goes on forever.

AMERICAN COUNCIL OF ENGINEERING COMPANIES

DEEP SOUTH CONVENTION & EXHIBITOR'S TRADE SHOW

Sandestin Golf and Beach Resort

July 9-11, 2015 | Sandestin, Florida

Registration Pricing Information

Early Bird Member Registration, \$650: Price includes: Thursday Deep South Bash; Friday & Saturday Breakfasts; Continuing Educational Sessions; Breaks; Saturday Closing Social & Dinner. After June 26, \$675.

Early Bird Non-Member Registration, \$750: Price includes: Thursday Deep South Bash; Friday & Saturday Breakfasts; Continuing Educational Sessions; Breaks; Saturday Closing Social & Dinner. After June 26, \$775.

Spouse/Guest Registration, \$160: Thursday Deep South Bash; Saturday Closing Social & Dinner. After June 26, \$200.

Child Registration (ages 5-16), \$70: Thursday Deep South Bash; Saturday Closing Social & Dinner.

Trade Show Exhibitor Registration, \$900: Price includes: space rental and setup fees; 8'x10' piped and draped booth; skirted table 2 chairs and signage and 2 adult tickets to Thursday Deep South Bash; Friday & Saturday Breakfasts; Breaks. After June 26, \$950.

Member/Non Member/Exhibitor Registration Form

Name/Exhibitor: _____ Amount Due _____
 Spouse/Guest/Co-Exhibitor: _____
 Child & age: _____
 Child & age: _____
 Child & age: _____
 Child & age: _____
 Child & age: _____

State: ☐ Alabama ☐ Arkansas ☐ Louisiana ☐ Mississippi ☐ Regional **Total Due:** \$ _____

Firm: _____

Billing Address: _____

Phone: _____ Email: _____

Early Bird Registration Deadline: Friday, June 26, 2015

Cancellation Policy: Payment must be received in full by June 26, 2015. Refunds will not be given after this date. You will be billed for your registration if you do not cancel by this date. Substitutes are welcome.

Payment Information

Check Number: _____ Date Rec'd: _____

Wednesday, July 8 WELCOME TO SANDESTIN

Early Arrivals

Thursday, July 9

12:00 - 5:00 Exhibitor's Trade Show Setup (Magnolia Ballroom)

1:00 - 5:00 Convention Registration (Magnolia Foyer)

1:00 - 5:00 ACEC/AL Executive Committee Meeting (Magnolia Ballroom D)

1:00 - 4:00 ACEC/AR Executive Committee Meeting

3:00 - 5:00 ACEC/LA Board of Governor's Meeting (Magnolia Ballroom E)

2:00 - 4:00 ACEC/MS Executive Committee Meeting (Cypress Boardroom)

4:00 - 5:00 ACEC/MS General Membership Meeting (Magnolia Ballroom F)

6:00 - 7:30 Opening Deep South Reception & Entertainment with Exhibitors (Magnolia Ballroom)

Friday, July 10

7:30 - 8:30 Networking Breakfast with Trade Show Exhibitors (Magnolia Ballroom)

7:30 - 8:30 Louisiana Past President's Council Meeting (Cypress Boardroom)

8:30 - 9:30 Opening Session: "Economic Drivers in the Southeast" (1.0 PDH) - Dr. Kevahn Deravhi (Mag D)

9:30 - 10:30 Session II: Update on the Restore Act - (1.0 PDH) - Justin Ehrenwerth (Magnolia D)

10:30 - 11:00 Networking Break & Door Prizes with Exhibitors (Magnolia Ballroom)

11:00 - 12:00 Session III: Hiring & Retaining New Engineers/Compensation Trends (1.0 PDH) - Sarah Walpert

12:00 - 1:00 Louisiana Minimum Standards (1.0 PDH - LA Licensees) - Steven Loeb

Saturday, July 11

7:30 - 8:30 Networking Breakfast with Trade Show Exhibitors (Magnolia Ballroom)

8:30 - 9:30 General Session: Marketing & Market Planning (1.0 PDH) - Ray Kogan (Magnolia D&E)

9:30 - 10:30 Session II: Topic TBA (1.0 PDH) - Suzanne Harness (Magnolia D&E)

10:30 - 11:00 Networking Break & Door Prizes with Exhibitors (Magnolia Ballroom)

11:00 - 12:00 Session III: "On the Point For Member Firms: ACEC Update" (1.0 PDH) - Steve Hall (Magnolia D&E)

11:00 - 1:00 Exhibitor Trade Show Tear Down

12:30 - 5:30 Golf Tournament: Shotgun Start (Tee times TBA—boxed deli lunch included) (Baytowne Course)

6:30 - 7:30 Closing Cocktail Social (Magnolia Foyer)

7:30 - 9:00 Closing Banquet & Officer's Induction Ceremony (Magnolia Ballroom)

Be sure to join us next year—July 6-10, 2016

NSPE QUESTIONS VIRGINIA COURT'S DECISION ON LIABILITY

Reprinted with permission

In an effort to prevent professional engineers from being placed at serious legal risk, NSPE has filed a “friend of the court” brief (<http://bit.ly/18CthsM>) before the Virginia Supreme Court in support of an appeal of a lower court decision that, if affirmed, would require a professional engineer to independently test and verify the accuracy of a product manufacturer’s representation to satisfy the professional standard of care.

The case arose in connection with the installation and collapse of a rain tank storm water management system in 2011. NSPE’s brief argues that the trial court improperly shifted the risk of liability for product defects from those who manufacture and sell products to those who deploy them in engineering designs. Professional engineers face a high but legitimate burden to ensure that the products they specify in their plans are appropriate for use, but the lower court ruling would, in effect, require the engineer to independently test and verify all materials rather than rely on the specifications warranted by the manufacturer. This is an unrealistic and inappropriate shifting of the burden and liability from the manufacturer to the engineer who reasonably relied upon the manufacturer’s representations. The brief notes that this risk allocation threatens to increase the cost of professional engineering services and discourages the use of newer innovative products and designs.

The brief also disputes other issues in the appeal. For example, the trial court ruled that the statute of limitations for design defect claims against engineers is paused when there is a continuing relationship between the PE and the owner. NSPE contends that this ruling undermines the basic procedural protections afforded to design professionals. Earlier court decisions, NSPE notes, have determined that the statute of limitations begins to run as soon as plans are presented by the design professional and accepted by the owner, even if the design professional and owner have a continuing relationship.

The trial court, according to NSPE, also failed to enforce the contractor’s obligations that are clearly defined in the contract documents and instead imposed liability on the professional engineer. By doing so, NSPE argues, the trial court undermines the commercial expectations of the parties and frustrates public policy interests that encourage commercial

parties to assign risks and duties clearly, specifically and appropriately through standard contract forms.

NSPE President Harve Hnatiuk, P.E., F.NSPE, commented: “As licensed professionals, PEs are held to and exercise high levels of accountability to protect the public health, safety, and welfare. This includes exercising high standards of care in selecting the materials they use in their designs and the integrity of the plans they seal. However, this court ruling would make the PE accountable for defects or failure of products to perform to standards warranted by the manufacturer, for delays in the client’s use of finished plans that are beyond the engineer’s influence or control, and obviate the use of the very contractual instruments that were designed to maximize transparency and accountability. This would undermine, rather than enhance, the professional engineer’s ability to honor his or her duties to the public.”

“NSPE’s intervention in this court proceeding is just the latest step in the Society’s 80-year history of actively advancing, promoting, and defending the meaning and efficacy of the professional engineer license in protecting the public that relies upon it for assurance that their welfare is served,” he added. Also joining the brief were the national and local affiliates of the American Council of Engineering Companies and the American Society of Civil Engineers.

Read the brief at <http://bit.ly/18CthsM>

Share this news with your members.

Access leader resources at www.nspe.org/toolbox.





Allen Precision Equipment
1-800-241-6223



Nikon's Nivo™ Series Nivo M and Nivo C

*Designed with high
productivity in mind*

FEATURES:

- Survey Pro software on-board Nivo C Series
- Windows CE touch-screen on Nivo C Series
- High quality Nikon optics
- Fast, accurate EDM
- Prism and reflectorless measurements
- Easy 2nd face keypad is optional
- Hot swappable batteries
- Compact, rugged, and lightweight
- Cable-free Bluetooth®
- Available in 2", 3" and 5" models

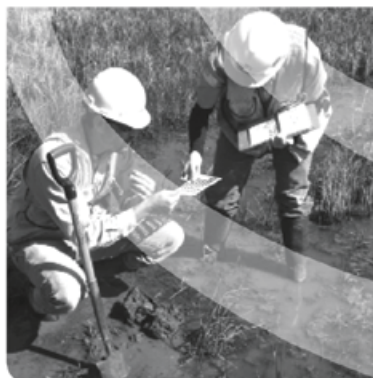
**CALL APE
FOR SPECIAL
PRICES**



Series includes:

- Support for USB memory sticks
- Wireless cable-free Bluetooth connections to external data collectors
- A USB High-speed data transfer

WWW.ALLENPRECISION.COM • 800-241-6223



SOLUTIONS START HERE

GOOD OPPORTUNITIES DO TOO

TBS is committed to precision, integrity, and ingenuity in providing tailored solutions to our associates and our clients. Our excellent compensation package includes base salary, profit sharing, 100% match 401K, education reimbursement, and health benefits.

For more information, visit www.tbsmith.com or email humanresources@tbsmith.com.



866.357.1050 tbsmith.com

Houma | Thibodaux | Baton Rouge | Lafayette | Shreveport | Houston | San Antonio

Mapping the world inside and out

- > Subsurface Utility Engineering
- > Surveying and Mapping
- > Utility Coordination / Relocation Inspection
- > Geophysical Investigation

Contact:

Andrew Sylvest
225 752 8322

andrew.sylvest@cardno.com

suesurvey@cardno.com

subsurfaceutilityengineering.com



www.cardno.com

Engineers • Architects • Surveyors
PROFESSIONAL LIABILITY INSURANCE
Loss Prevention • Risk Management Assistance

**INDUSTRIAL • PUBLIC WORKS
PETROCHEMICAL • COMMERCIAL
ENVIRONMENTAL • GOVERNMENTAL
AND MOST OTHER PROJECT TYPES**

4610 Bluebonnet Blvd., Suite A
Baton Rouge, LA 70809
Phone: (225) 295-2995
Fax: (225) 368-2145
www.alexsand.com

**Alexander
& Sanders**
INSURANCE SPECIALISTS



Taking care of your water and wastewater needs.

ENVIRONMENTAL TECHNICAL SALES, INC.

Ronnie Hebert, PE

7731 Office Park Boulevard
Baton Rouge, Louisiana 70809
Phone: (225) 295-1200
Fax: (225) 295-1800

**Water • Wastewater • Sludge • Air
Equipment – Systems – Solutions**

PROFESSIONAL
DEVELOPMENT
SEMINARS

PDH'S

**ATTENTION:
PROFESSIONAL ENGINEERS
NEEDING PDH's**

**Our 23rd Annual
2-Day Seminar.
15 PDH's for \$500**

For More Information:
Call 901-493-6502 (Memphis, TN)
or Visit Our Website at
www.PEseminars.com

New Orleans, LA
Houston, TX
Dallas, TX
Little Rock, AR
Memphis, TN
Birmingham, AL
Nashville, TN
St. Louis, MO
Chicago, IL

Sept. 16 & 17, 2015
Sept. 21 & 22, 2015
Sept. 24 & 25, 2015
Sept. 28 & 29, 2015
Oct. 6 & 7, 2015
Oct. 12 & 13, 2015
Oct. 15 & 16, 2015
Oct. 26 & 27, 2015
Oct. 29 & 30, 2015

LES CORPORATE SUSTAINING MEMBERS

Angelette-Picciola, Llc
PO Box 970
Larose, LA 70373
(985) 798-7700

ARCADIS-US
10352 Plaza Americana Dr.
Baton Rouge, LA 70816
(225) 292-1004

Ardaman & Associates, Inc.
PO Box 83710
Baton Rouge, LA 70884
(225) 752-4790

Badeaux Engineers Inc
115 E. 6th Street
Thibodaux, LA 70301
(985) 447-2317

Balar Associates Inc
631 Milam Street, Ste. 300
Shreveport, LA 71101
(318) 221-8312

BCG Engineering & Consulting, Inc.
3012 26th Street
Metairie, LA 70002
(504) 454-3866

Black & Veatch Corporation
14100 San Pedro Ave., Ste. 410
San Antonio, TX 78232
(210) 404-1330

Brammer Engineering Inc
400 Texas St Ste 600
Shreveport, LA 71001
(318) 429-2345

Buchart Horn, Inc
18163 E. Petroleum Drive
Baton Rouge, LA 70809
(225) 755-2120

Burk-Kleinpeter, Inc.
4176 Canal Street
New Orleans, LA 70119
(504) 486-5901

C H Fenstermaker & Assoc Inc
135 Regency Square
Lafayette, LA 70508
(337) 237-2200

C.J. Savoie Consulting Engineers, Inc.
PO Drawer R
Paincourtville, LA 70391
(985) 369-2341

Civil And Structural Engineers, Inc.
PO Box 4825
Lafayette, LA 70502
(337) 232-3336

Conestoga-Rovers & Associates Inc
5551 Corporate Blvd., Ste. 200
Baton Rouge, LA 70808
(225) 292-9007

Coyle Engineering Co Inc
PO Box 6177
Bossier City, LA 71171
(318) 746-8987

CPL Systems Inc
PO Box 60160
Lafayette, LA 70596
(337) 269-4699

CSRS
6767 Perkins Road, Ste 200
Baton Rouge, LA 70808
(225) 769-0546

D W Jessen & Associates, LLC
440 Kirby
Lake Charles, LA 70601
(337) 433-0561

Delta Process Equipment
PO Box 969
Denham Springs, LA 70727
(225) 665-1666

Denmon Engineering Co Inc
PO Box 8460
Monroe, LA 71211
(318) 388-1422

Dis-Tran Packaged Substations, LLC
4725 Hwy 28 E
Pineville, LA 71360
(318) 448-0274

Domingue Szabo & Associates, Inc.
102 Asma Blvd, Suite 305
Lafayette, LA 70508
(337) 232-5182

Dubroc Engineering Inc
202 Rue Iberville Ste 101
Lafayette, LA 70508
(337) 237-4520

Duplantis Design Group Professional Corp
314 East Bayou Road
Thibodaux, LA 70301
(985) 447-0090

Eustis Engineering Services
3011 28th Street
Metairie, LA 70002
(504) 834-0157

Evans-Graves Engineers
9029 Jefferson Highway, Ste. 200
Baton Rouge, LA 70809
(225) 926-1620

Forte & Tablada Inc
9107 Interline Ave
Baton Rouge, LA 70809
(225) 927-9321

Fugro Chance
200 Dulles Dr
Lafayette, LA 70506
(337) 237-1300

Fugro Consultants, Inc.
916 Sampson St Ste E
Westlake, LA 70669
(337) 439-1731

Geoengineers, Inc.
11955 Lakeland Park Blvd., Ste. 100
Baton Rouge, LA 708094217
(225) 293-2460

Glenn G Shaheen & Associates, Inc.
P.O. Box 298
Gonzales, LA 707070298
(225) 644-5523

Gulf States Engineering
17961 Painters Row
Covington, LA 70435
(985) 893-3631

H. Davis Cole & Associates, LLC
2321 N. Hullen St., Suite B
Metairie, LA 70001
(225) 612-9234

Huesker, Inc.
333 Eastside Drive, #40
Fortson, GA 31808

Huval & Associates, Inc.
922 West Pont Des Mouton Road
Lafayette, LA 70507
(337) 234-3798

ILD, Inc.
8867 Highland Road, #378
Baton Rouge, LA 70808
(225) 769-2780

Infinity Engineering Consultants, LLC
PO Box 792745
New Orleans, LA 70179
(504) 304-0548

J Wayne Plaisance Inc
PO Drawer 730
Galliano, LA 70354
(985) 632-5596

LA Testing & Inspection
PO Box 2934
Lafayette, LA 70502
(337) 235-9411

Lanier & Associates Inc
4101 Magazine St
New Orleans, LA 70115
(504) 895-0368

Lazenby & Associates Inc
2000 North 7th Street
West Monroe, LA 71291
(318) 387-2710

Levingston Group, LLC
PO Box 1605
Lake Charles, LA 70602
(337) 527-3806

LES CORPORATE SUSTAINING MEMBERS

Louisiana Asphalt Pavement Association
PO Box 80640
Baton Rouge, LA 70898
(225) 927-9737

Lourie Consultants
3924 Haddon St
Metairie, LA 70002
(504) 456-0966

LSU College of Engineering
3304 V Patrick Taylor Hall
Baton Rouge, LA 70803

M & E Consulting Inc
1304 Bertrand Dr A6
Lafayette, LA 70506
(337) 234-7474

Manchac Consulting Group, Inc.
10542 S. Glenstone Place
Baton Rouge, LA 70810
(225) 448-3972

Meyer & Associates
PO Box 2149
Sulphur, LA 70664
(337) 625-8353

Meyer, Meyer, LaCroix & Hixson, Inc.
100 Engineer Place
Alexandria, LA 71303
(318) 448-0888

Michael Pisani & Associates Inc
1100 Poydras St, Ste 1430
New Orleans, LA 70163
(504) 582-2468

Modjeski & Masters Inc
1055 St Charles Ave, Ste 400
New Orleans, LA 70130
(504) 524-4344

Mohr and Associates, Inc.
6025 Buncombe Rd
Shreveport, LA 71129
(318) 686-7190

MSMM Engineering, LLC
4640 South Carrollton Avenue,
Ste. 210-12
New Orleans, LA 70119
(504) 559-1897

MWH Americans Inc.
7742 Office Park Blvd
Baton Rouge, LA 70809
(225) 926-3991

Neel-Schaffer, Inc.
314 Audubon Blvd
Lafayette, LA 70503
(337) 232-6111

N-Y Associates Inc
2750 Lake Villa Dr Ste 100
Metairie, LA 70002
(504) 885-0500

Parsons Brinckerhoff, Inc.
1100 Poydras Street, Ste. 1175
New Orleans, LA 70163
(504) 522-7143

Picciola & Associates Inc
PO Box 687
Cut Off, LA 70345
(985) 632-5786

Poche' Prouet Associates, LTD
100 Central Street, Ste 200
Lafayette, LA 70501
(337) 237-6517

Port Aggregates, Inc.
314 North Main Street
Jennings, LA 70546
(337) 824-7625

Professional Engineering Consultants Corporation
7600 Innovation Park Drive
Baton Rouge, LA 70820
(225) 769-2810

Providence/GSE Associates LLC.
991 Grand Caillou Rd
Houma, LA 70363
(985) 876-6380

Sellers & Assoc Inc
148-B Easy St
Lafayette, LA 70506
(337) 232-0777

SJB Group, LLC
PO Box 1751
Baton Rouge, LA 70821
(225) 769-3400

Southeast Engineers, LLC
4915 S. Sherwood Forest Boulevard,
Ste. B
Baton Rouge, LA 70816
(225) 295-1880

Southeastern Tank, Inc.
60 Vesta Road
Lebanon, TN 37090
(615) 466-5220

Stantec Engineering Consulting Services
500 Main Street
Baton Rouge, La 70801
(225) 765- 7400

Stokes & Spiehler USA, Inc.
PO Box 52006
Lafayette, LA 70505
(337) 233-6871

T. Baker Smith, LLC
PO Box 2266
Houma, LA 70361
(985) 868-1050

Taylor Power Systems
120 Interstate Drive
Richland, MS 39218
(601) 922-4444

Terracon Consultants
2822 B O'Neal Lane
Baton Rouge, LA 70816
(225) 344-6052

Trigon Associates, LLC.
1515 Poydras Street, Suite 2200
New Orleans, LA 70112

Truline
1415 Panther Lane, Ste. 234
Naples, FL 34109
(239) 591-6234

Volkert, Inc.
3466 Drusilla Lane, Ste. A
Baton Rouge, LA 70809
(225) 218-9440

W. S. Nelson & Co.
1200 St Charles Ave
New Orleans, LA 70130
(504) 593-5395

Waggoner Engineering, Inc.
1503 Goodwin Road, Ste. 203
Ruston, LA 71270
(318) 255-1872

Waskey
406 Beth Drive
Franklin, LA 70538
(337) 578-1918

Weigh Tech Engineering
2645 Rome Dr.
Baton Rouge, LA 70814
(225) 456-3671

Whitney Bank
3135 College Dr.
Baton Rouge, LA 70708

Willbros Engineers, LLC
8641 United Plaza Blvd, Ste. 100
Baton Rouge, LA 70809
(225) 932-6000

WTAA Engineering, LLC
2622 North St.
Baton Rouge, LA 70802
(225) 383-0822

Louisiana Engineering Society

9643 Brookline, Suite 116
Baton Rouge, LA 70809-1488

Periodicals
POSTAGE PAID
Postal Permit
USPS 588360

PRECAST CONCRETE



**We can handle ALL
your Precast
Concrete needs!**



- **Pump Stations**
- **Oilfield Platforms**
- **Bridges**
- **LA DOTD
Concrete Barriers**

Port Aggregates Also Offers:

- **Precast Custom Applications**
- **Ready Mix Concrete**
- **Construction Aggregate**
- **Specialty Stones**



Contact us with any project
specifications or requirements
and we will provide you
with a "Precast Solution"

Port Aggregates, Inc.

314 N. Main St. • Jennings, LA 70546 • Phone: (337) 824-ROCK • Fax: (337) 824-7777 • 24 Hour Service: (337) 824-3338

www.portaggregates.com