

Louisiana Engineer & Surveyor Journal

August 2014

Vol. 17 No. 3



2014-2015 LAPELS BOARD

(L to R): Paul Hale, PhD, PE; Alan Krouse, PE; Ali Mustapha, PE;
Chris Knotts, PE; Ernie Gammon PLS; Scott Phillips, PE, PLS;
Ted Thompson, PE; David Patterson, PLS; John Irving, PE; Kevin Crosby, PE, PLS;
Not pictured: Billy Moore, PE

Inside This Issue:

LAPELS

Message from the Chairman

Page 3

LES

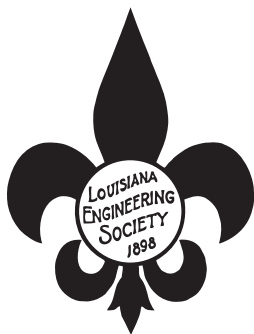
8-hour Life Safety Code
Seminar Registration

Page 17-18

ACEC/L

The Spec Sheet

Page 21



Louisiana Engineering Society

9643 Brookline Avenue, Suite 116, Baton Rouge, LA 70809-1488

Telephone: (225) 924-2021, Fax: (225) 924-2049

E-mail: les@les-state.org

Website: <http://www.les-state.org>



American Council of Engineering Companies of Louisiana

9643 Brookline Avenue, Suite 112, Baton Rouge, LA 70809-1488

Telephone: (225) 927-7704, Fax: (225) 927-7779

E-mail: acecl@acecl.org



Louisiana Professional Engineering and Land Surveying Board

9643 Brookline Avenue, Suite 121, Baton Rouge, LA 70809-1488

Telephone: (225) 925-6291, Fax: (225) 925-6292

Website: www.lapels.com



LOUISIANA ENGINEER AND SURVEYOR JOURNAL

August 2014

Vol. 17 No. 3

The Louisiana Engineer & Surveyor Journal

(ISSN: 15275965, USPS 588-360)

9643 Brookline, Suite 116

Baton Rouge, LA 70809-1488

This is the official publication of the Louisiana Engineering Society, the Louisiana Professional Engineering and Land Surveying Board, and the American Council of Engineering Companies of Louisiana.

This magazine is published quarterly. "PERIODICALS POSTAGE PAID at Baton Rouge, LA."

POSTMASTER—Please send address changes to:
The Louisiana Engineer & Surveyor Journal
9643 Brookline Ave., Suite 116, Baton Rouge, LA 70809-1488
Telephone: (225) 924-2021, Fax: (225) 924-2049

LES ADVERTISING RATES

<u>SIZE</u>	<u>COST PER ISSUE</u>	<u>COST PER YEAR</u>
Full Page Inside	\$1,200	\$3,840
Full Page Back Cover	\$1,500	\$4,800
1/2 Page	\$700	\$2,240
1/4 Page	\$420	\$1,344

- 1) Prices quoted apply to camera-ready copy. A one-time charge will be added for composition of an ad, art work, or if changes are made during the contact period.
- 2) All ads must be prepaid. Advertisements with payment should be sent to LES by the 15th of the month preceding month of issue.
- 3) Published quarterly, February, May, August and November.

PUBLICATIONS COMMITTEE

Brenda Gajan, *Managing Editor*

Nancy Donald, *Associate Editor*

Dan Mobley, *Associate Editor*

The Louisiana Engineering Society, the Louisiana Professional Engineering and Land Surveying Board, and the American Council of Engineering Companies of Louisiana do not guarantee the accuracy of statements made or necessarily concur with opinions expressed in the publication.

MESSAGE FROM THE CHAIRMAN

M. Ernest Gammon, Sr. PLS



M. Ernest Gammon, Sr. PLS
Chairman

The LAPELS Board and staff are always busy with duties designed to “safeguard the life, health and property, and promote the public welfare.” Consequently a lot has taken place over the past few months that should be of interest to our licensees.

New Board Members. As is noted elsewhere in this issue of the *Louisiana Engineer and Surveyor Journal*, Governor Jindal has appointed two new Board members to replace Jim Bowie and Miles Williams, whose terms expired on March 31. Many of you are no doubt already familiar with Scott Phillips, PE, PLS, and Alan Krouse, PE. Their biographical sketches are contained herein, but I’d like to add that both are exceptionally astute, experienced, hard-working individuals who have already proven to be assets to the Board.

2014 Legislative Session. In conjunction with the efforts of LES and LSPS, the Board monitors proposed legislation that may affect the practices of engineering and surveying in Louisiana. To our knowledge, no legislation was passed in the 2014 legislative session that would have a negative impact on the operation of the Board or on the professions that we regulate. We were gratified to observe the deferral (retraction and/or defeat) in committee hearings of several bills that we believe would have adversely affected our ability to protect the safety and welfare of the public.

Rule Changes. The board has approved a rule change that will “decouple” the examination and experience requirements for licensure as a Professional Engineer. The rule change, which has been published in the *Louisiana Register* and took effect on July 21, 2014, allows professional engineer applicants to take the NCEES Principles and Practices exam at any time after becoming certified by LAPELS as an Engineer Intern.

In the past, Engineer Interns have been required to fulfill the Board’s experience requirements prior to taking the Principles and Practices exam. The new rule will conform to the NCEES Model Law, to NSPE’s recommendations on this matter, and to the requirements that are currently in place in a number of other states.

It should be noted that irrespective of the date on which an engineer applicant takes the Principles and Practices exam, he must provide references attesting to his “good character and reputation,” and must attain four years of “progressive engineering experience in work acceptable to the board,” prior to applying for licensure as a PE.

Declaratory Order. The Board approved at its March, 2014 meeting a declaratory order that addresses the use of the term Structural Engineer. The full text of the declaratory order, which was developed in response to a request from a licensee, can be found on the Board’s website (www.lapels.com). The following is a summary of the Board’s position:

“Only professional engineers who are listed by the Board in the discipline of structural engineering shall be permitted to use the designation “Structural Engineer” or “S.E.” in conjunction with their name on letters, business cards or other forms of communication. However, it is acceptable for professional engineers to describe their structural engineering expertise if that is an area of their in which they can demonstrate competence (e.g., “Expert in Structural Engineering,” etc.), even if they are not listed by the Board as Structural Engineers.

Meeting with Engineers Nova Scotia. Engineers Nova Scotia is the licensing board for the approximately 6000 Professional Engineers and Engineer Interns who practice in Nova Scotia. Pursuant to discussions that took place at the 2013 NCEES annual meeting, Engineers Nova Scotia invited three LAPELS representatives to attend their July 23-24 meeting in Digby, Nova Scotia.

continued on next page

UPCOMING BOARD MEETINGS

Mon – Sept 15, 2014 – UL Lafayette

Mon/Tues – November 17/18, 2014

Board Members

M. Ernest Gammon, Sr. PLS
Chairman

Theodore H. Thompson
Vice Chairman

John W. ‘Billy’ Moore, PE
Treasurer

Kevin E. Crosby, PE, PLS
Secretary

Ali M. Mustapha, PE
John T. Irving, PE
David L. Patterson, PLS
Paul N. Hale, Jr. PhD, PE
Christopher P. Knotts, PE
Alan D. Krouse, PE
D. Scott Phillips, PE, PLS

Board Staff

Donna D. Sentell
Executive Director

Tyson Ducote
Compliance Investigator

Jeff Morgan
Compliance Investigator

www.lapels.com

By the time you read this, Emeritus member Sonny Launey, Board Treasurer Billy Moore and Executive Director Donna Sentell should have returned from the meeting. The initial impetus for the invitation was based on the cultural ties and heritage shared by southwest Louisiana and Acadia. The invitation was extended with several objectives in mind.

The first was to “explore the possibility of creating a closer linkage” between the two Boards, as a means of sharing their heritage and encouraging greater professional mobility between the two jurisdictions. The second was to open a dialogue on topics such as Industrial Licensure and the NCEES Model Law.

Dr. Mark Zappi, Dean of Engineering at the University of Louisiana-Lafayette, was also an invited guest. He and the Dean of Engineering at Dalhousie University were scheduled to discuss establishing an exchange program between the two schools.

While I have not yet received a report on the meeting, it is my expectation that the discussions were fruitful and that LAPELS and UL-Lafayette will be in a position to extend a reciprocal invitation to representatives of *Engineers Nova Scotia* to visit south Louisiana.

Enforcement. Having received quite a few questions and comments about an enforcement case that was reported in the previous edition of this publication, several members of the LAPELS Board have recently attended professional society meetings to explain the process whereby complaints are investigated and sanctions are imposed. In the next issue I will discuss these procedures in this column so that all of our licensees will have a better understanding of our rules, our policies and our procedures.

I’d like to close this report with a reminder that LAPELS Board meetings are open to the public. If you have information you would like to present to the Board during the Public Comment period, or if you would simply like to observe our deliberations, you are certainly welcome to do so.

DISCIPLINARY AND ENFORCEMENT ACTIONS

Tyson Ducote, Compliance Investigator

The Board continues to investigate alleged violations of the laws and rules which regulate the practice of engineering and land surveying in Louisiana. Substantiated violations result in disciplinary or enforcement action being taken either through a Consent Order or by Board Decision following a formal hearing at which the respondent is adjudged guilty of one or more violations. Below is a summary of the disciplinary/enforcement actions taken by the Board since the previous issue of the Journal.

UNLICENSED OFFER AND/OR PRACTICE OF ENGINEERING OR LAND SURVEYING:

Syntergy L.L.C., an unlicensed firm which subsequently became licensed effective July 2, 2013 (EF-5372), was subject to enforcement action by the Board for offering to practice engineering and using the word “engineering” in connection with a person’s name or form of business or activity in Louisiana without proper licensure in violation of La. R.S. 37:681 and 37:700(A)(1), (7) and (9), to wit LAC Title 46:LXI\$2301(B)(1). Between May 2009 and June 2013, the firm represented on its website that it was an “engineering firm specializing in energy management”. The firm has entered into a Consent Order with the Board, wherein it admitted to the referenced facts and agreed to pay a fine of \$1,000; to pay administrative costs of \$474.50; and to the publication of the Consent Order on the Board’s website, the printing of a summary of this matter by name in this publication, and the reporting of this matter by name to NCEES.

Ferrell Engineering, Inc., an unlicensed firm which subsequently became licensed effective March 13, 2014

(EF-5484), was subject to enforcement action by the Board for practicing and/or offering to practice engineering and using the word “engineering” in a person’s name or form of business or activity in Louisiana without proper licensure in violation of La. R.S. 37:681 and 37:700(A)(1), (7) and (9), to wit LAC Title 46:LXI\$2301(B)(1). Between 2009 and 2013, the firm admittedly provided engineering services on 15 projects in Louisiana. The firm has entered into a Consent Order with the Board, wherein it admitted to the referenced violations of the above laws/rules and agreed to pay a fine of \$2,500; to pay administrative costs of \$428.12; and to the publication of the Consent Order on the Board’s website, the printing of a summary of this matter by name in this publication, and the reporting of this matter by name to NCEES.



Tyson Ducote
Compliance Investigator



Jeff Morgan
Compliance Investigator

MULTIPLE LAWS/RULES VIOLATIONS:

Gregg S. Perkin, PE, a licensed engineer (PE-23587), was subject to disciplinary action by the Board for (a) unknowingly aiding or assisting another person in violating the laws and/or rules of the Board in violation of La. R.S. 37:698(A)(12) and (b) unknowingly failing to properly seal an engineering document that has been issued by the licensee as completed work in violation of La. R.S. 37:698(A)(6), to wit LAC Title 46:LXI\$2701(A)(4)(a)(ii). In 2012, Engineering Partners International, Incorporated, a licensed firm whose license has been in an expired status since 2004, unknowingly practiced and/or offered to practice engineering in Louisiana by (a) preparing and issuing to clients in Louisiana an engineering report related to a drilling rig which it had inspected in Louisiana and (b) conducting business in Louisiana through its firm name. Mr. Perkin was an owner, officer and employee of the firm. Additionally, in 2012 Mr. Perkin unknowingly failed to properly seal the referenced engineering report related to the drilling rig which he had inspected in Louisiana. The report detailed the findings of Mr. Perkin during a forensic investigation and analysis of industry practices relating to the cause of an accident occurring on the drilling rig at the time it was located in Texas. Mr. Perkin's inspection of the drilling rig in Louisiana occurred after the accident. At the time he prepared and issued the report, Mr. Perkin in good faith did not believe that the report was an engineering report. Mr. Perkin has entered into a Consent Order with the Board, wherein he admitted to the referenced unknowing violations of the above laws/rules and agreed to pay a fine of \$1,000; to pay administrative costs of \$681.81; to successfully complete the Board's online Louisiana Laws and Rules Quiz; to immediately cease and desist in aiding or assisting the firm in violating the laws and/or rules of the Board; and to the publication of the Consent Order on the Board's website, the printing of a summary of this matter by name in this publication, and the reporting of this matter by name to NCEES.

AIDING OR ASSISTING ANOTHER PERSON IN VIOLATING LAWS/RULES OF THE BOARD:

Everett J. Pastureau, an engineer intern (EI-19234) whose certification has been in an expired status since April 1, 2008, was subject to disciplinary action by the Board for aiding or assisting another person in violating the laws and/or rules of the Board in violation of La. R.S. 37:698(A)(12). Between May 2009 and June 2013, Syntergy L.L.C., an unlicensed firm, represented on its website that it was an "engineering firm specializing in energy management". The firm subsequently became licensed effective July 2, 2013 (EF-5372). Mr. Pastureau was an owner, employee and the President of the firm. Mr. Pastureau has entered into a Consent Order with the Board, wherein he admitted to the referenced facts and agreed to pay a fine of \$250; to pay administrative costs of \$474.50; to successfully complete the Board's online Louisiana Laws and Rules Quiz; to successfully complete the Board's online Louisiana Professionalism and Ethics Quiz; and to the publication of the Consent Order on

the Board's website, the printing of a summary of this matter by name in this publication, and the reporting of this matter by name to NCEES.

Marshall T. Ferrell, PE, a licensed engineer (PE-26204), was subject to disciplinary action by the Board for aiding or assisting another person in violating the laws and/or rules of the Board in violation of La. R.S. 37:698(A)(12). Between 2009 and 2013, Ferrell Engineering, Inc., an unlicensed firm, admittedly provided engineering services on 15 projects in Louisiana. The firm subsequently became licensed effective March 13, 2014 (EF-5484). Mr. Ferrell was an owner and the President of the firm. Mr. Ferrell is now the supervising professional of the firm. Mr. Ferrell has entered into a Consent Order with the Board, wherein he admitted to the referenced violations of the above laws/rules and agreed to pay a fine of \$2,000; to pay administrative costs of \$428.12; to successfully complete the Board's online Louisiana Laws and Rules Quiz; to successfully complete the Board's online Louisiana Professionalism and Ethics Quiz; and to the publication of the Consent Order on the Board's website, the printing of a summary of this matter by name in this publication, and the reporting of this matter by name to NCEES.

PRACTICE WITH AN EXPIRED LICENSE:

Engineering Partners International, Incorporated, a licensed engineering firm (EF-2055), was subject to disciplinary action by the Board for practicing and/or offering to practice engineering in Louisiana with an expired license in violation of La. R.S. 37:698(A)(9) and (16). The firm's license was in an expired status since October 1, 2004 and during this time period the firm unknowingly practiced and/or offered to practice engineering in Louisiana by (a) preparing and issuing to clients in Louisiana an engineering report related to a drilling rig which it had inspected in Louisiana and (b) conducting business in Louisiana through its firm name. The report detailed the findings of Gregg S. Perkin, PE (who was an owner, officer and employee of the firm) during a forensic investigation and analysis of industry practices relating to the cause of an accident occurring on the drilling rig at the time it was located in Texas. Mr. Perkin's inspection of the drilling rig in Louisiana occurred after the accident. At the time he prepared and issued the report, Mr. Perkin in good faith did not believe that the report was an engineering report. The firm has entered into a Consent Order with the Board, wherein it admitted to the referenced unknowing violations of the above laws/rules and agreed to pay a fine of \$4,000; to pay administrative costs of \$681.81; to pay past unpaid renewal fees of \$180.00; to immediately cease and desist the practicing of and/or offering to practice engineering in Louisiana with an expired license; to have its supervising professional successfully complete the Board's online Louisiana Laws and Rules Quiz; and to the publication of the Consent Order on the Board's website, the printing of a summary of this matter by name in this publication, and the reporting of this matter by name to NCEES.

NEWLY APPOINTED TO THE LOUISIANA PROFESSIONAL ENGINEERING AND LAND SURVEYING BOARD

ALAN D. KROUSE, PE

Mr. Krouse earned a Bachelor of Science in Civil Engineering in 1977 from Louisiana State University and obtained his Professional Engineering License in 1981.

He began his career at LADOTD in 1977 in the Road Design section. While in the Road Design section Alan worked on numerous projects including sections of US 61, US 90, and LA 15. Also, during his tenure in the Road Design section, Alan was the Assistant Urban System Coordinator and a Consultant Coordinator. Work in these assignments included managing projects in all the major metropolitan areas, all of I-49 in Shreveport, and sections of I-49 north of Alexandria. After eight years at LADOTD Alan left the Department and went to work in private practice. During his career in private practice he continued working as a road design engineer. Alan has also been involved with many projects designed for the Port of South Louisiana and the Port of Lake Providence. Alan has worked for Meyer and Associates, Shaw and owned his own firm. He presently is a Senior Staff Engineer with Buchart Horn, Inc. in Baton Rouge.

Throughout his career, Alan has remained active in professional organizations. He has been a member of the

La. Engineering Society for over twenty five years and has held every office at the local and state level. Alan served as State President in 2008-2009 and 2012-2013. He is a Fellow Member of the National Society of Professional Engineers, a member of ASCE and currently the president of the Louisiana Engineering Foundation.

In his community Alan served on the Ascension Parish Planning and Zoning Commission for four years including two years as chairman.

Alan was born in Denver but his parents moved to Covington in 1965 when it was a small rural town. Alan and his wife Stephanie reside in Gonzales and they have two daughters, Brooke and Allison. Most weekends you can find Alan on a golf course still trying to master the game.



Alan D. Krouse, PE

D. SCOTT PHILLIPS, PE, PLS

Governor Bobby Jindal has appointed D. Scott Phillips, P.E., P.L.S., to LAPELS, effective April 4, 2014. Scott will serve a six-year term on the Board as a Professional Engineer from the practice of Industry.

Scott is a native of Monroe and graduated from Louisiana Tech with a degree in Civil Engineering, and he has an M.B.A. from Mississippi College. He is an active Civil Engineer and/or Land Surveyor in numerous states, including Alaska and Florida. In addition, he is a Certified Federal Surveyor (CFedS).

For the past ten years, Scott has served as the Mid-South Regional Engineer for Tensar International Corporation, the world's leading manufacturer of geogrids. In this capacity, he is responsible for providing design and product support to engineers for industrial, commercial and roadway projects in Arkansas, Louisiana and Mississippi.

Scott began his professional career as a design engineer with Garver Engineers, in their Jackson, Mississippi, office. After several years there and longing for Louisiana life, he relocated back to north Louisiana, and was employed with French

Engineering as a Project Engineer and Surveyor immediately prior to his current position with Tensar.

The Monroe Chapter of the Louisiana Engineering Society, of which he has served as the Professional Engineer in Industry representative for the past 5 years, nominated him for this appointment. Scott is an active member of ASCE, LSPS, and several other state societies in his industry territory, and he has served as an Adjunct Professor at Louisiana Tech.

Scott and his wife, Janie, have two daughters and one granddaughter, and reside on their farm outside of Mer Rouge. He is a commercial pilot and flight instructor, and in addition to hunting and fishing, enjoys spending his vacation time traveling overseas with his wife.



D. Scott Phillips, PE, PLS

NEW REGISTRANTS

Congratulations to the following newly licensed and certified for the period of 4/12/14 - 7/15/14

LAND SURVEYOR INTERNS

Hanson, Scott Paul, LSI
Parks, Cody David, LSI
Yarbrough, Joseph Allen, LSI

SURVEYING FIRMS

Batture LLC, VF
C. Ballard Surveying, LLC, VF
Dragon Limited, Inc., VF
Encompass Services, LLC, VF
HMG Engineering, Ltd., VF

ENGINEER INTERNS

Ardoin, Zachary Chase, EI
Bacala, Joseph Anthony, EI
Barr, Aaron Cosby, EI
Bayham, Russell Wayne, EI
Beach, Trevor William, EI
Becnel, Jordan Michael, EI
Belfassi, Hamid, EI
Belgodere, Jorge Alfonso, EI
Berard, Chase Michael, EI
Bernard, Stephen Joseph, EI
Bienvenu, Andrew Thomas, EI
Blazo, Christopher, EI
Born, Kelly Leigh, EI
Bouanchaud, Stephen Bernard, EI
Bourgeois, Thomas Ryan, EI
Bowman, Morgan Dacheal, EI
Bread, Thomas Matthew, EI
Brignac, Andrew Paul, EI
Brown, Austin Reed, EI
Brumfield, Grant Barrett, EI
Campbell, Michelle Lynn, EI
Campoblanco, Fabiola Ines, EI
Canales, Christopher John Robert, EI
Chauvin, Leonard Joseph, EI
Coffin, Jonathan Taylor, EI
Collier, Zachary David, EI
Crews, Kaylin Elizabeth, EI
Cruz, Teyve Fernando, EI
Delahoussaye, Denis James, EI
Dinwiddie, Gregory Allen, EI
Dore, Katie Marie, EI
Duchesne, Courtney Michelle, EI
Dufour, Scott Andrew, EI
Duhé, Dustin Daniel, EI
Dunlevy, Ryan Christopher, EI
Dupuis, Shannon Paul, EI
Etkins, Joy O., EI
Falgoust, Jordan Paul, EI
Fenwick, Blake Thomas, EI
Fletcher, Michael Olivier, EI
Foley, John Sydney, EI
Fontenot, Aaron Taylor, EI
Gagnet, Eric Michael, EI
Gahagan, Kristen Alice, EI
Garon, Joseph David, EI
Gerken, Ryan Michael, EI
Giroir, Kevin Gerard, EI
Goldsmith, David Ward, EI
Gonzalez Rodriguez, Carlos Rene, EI
Goppelt, Philip Alan, EI
Greco, Brandon Lee, EI
Green, Joshua Allen, EI
Greene, Paul David, EI
Griffin, Harold Joseph, EI
Gullem, Roy A., EI
Hargroder, Lane Bienvenue, EI
Hawkins, Samantha Kate, EI
Hebert, Tory J., EI
Henkel, Charles Edward, EI
Hernandez, Christopher Jon, EI
Herrera, Nelida Andreina, EI
Hill, Matthew Edward, EI
Hirsch, Christopher Thomas, EI
Hoffpauir, Kourtney Ackley, EI
Holliday, Sanford Porter, EI
Huffman, Samantha Lavonne, EI
Huhner, Judge, EI
Ige, Abiola, EI
Janssen, Jared Adam, EI
Jeansonne, Christopher Gerard, EI
Jeansonne, Ryan Edward, EI
Jenkins, Brent Cruz, EI
Jenkins, Sydney Alyse, EI
Jensen, Andrew Robert, EI
Johnson, Nicholas Wayne, EI
Jones, Marchelle R., EI
Judice, Dustin Paul, EI
Jumonville, Christopher Joseph, EI
Kelley, Bliss Alexis, EI
Kenney, Michael Thomas, EI
Kohler, Joshua Lee, EI
Lassus, Ryan Patrick, EI
Ledet, William Christopher, EI
Lemos, Isabela Fernandes, EI
Lin, Jie, EI
Louth, Kevin Lawrence, EI
Lucas, Aaron Blair, EI
Maddox, Shelby Robert, EI
Mai, Khietlethanh, EI
Mannon, Timothy Patrick, EI
Mason, Anthony B., EI
Maynard, Damian Michael, EI

Mayne, Chloe LeeAnn, EI
McGoey, William Robert, EI
McLain, Thomas Richard, EI
Merritt, Jason Frederick, EI
Moon, Andrew Taylor, EI
Morein, Brad Michael, EI
Mullett, Stephen Craig, EI
Mumin, Joseph Faheem, EI
Nelson, David Michael, EI
Newell, John Michael, EI
Nur, Mohammad Abdullah, EI
Ours, Evan Alexander, EI
Pakhare, Devendra, EI
Pan, Fang, EI
Partington, Troy Caleb, EI
Pearce, Brandon Morelle, EI
Pecue, William Wallace, EI
Pellerin, Taylor Elliott, EI
Peyton, William Cranford, EI
Pizzalato, Sara Elizabeth, EI
Pottharst, S. James Joseph, EI
Preskitt, Jay Michael, EI
Pritchett, Callie Camille, EI
Quebedeaux, Blake Michael, EI
Ren, Maoming, EI
Roberts, Brandon William, EI
Robinson, Arthur Eugene, EI
Rody, Walter William, EI
Sadid, Kazi M. D., EI
Scheznaider, Carson Joseph, EI
Scott, Eric Joseph, EI
Scott, Randall A., EI
Severson, John Daly, EI
Shams, Alaa, EI
Sherpa, Ang Nurbu, EI
Simon, Spencer Mark, EI
Spence, Tyler Jacob, EI
Starring, Joseph Michael, EI
Steffen, Holly Marie, EI
Stonaker, Steven Andrew, EI
Strauss, Ronald Roy, EI
Suarez, Juan Joseph, EI
Suliman, Yousef Fathi Ahmed, EI
Tanner, Daniel M., EI
Tassin, Drake David, EI
Terry, Michael Lee, EI
Townsend, Clayton Douglas, EI
Townsend, Jason Matthew, EI
Trahan, Jason Alan, EI
Tran, Nam Hoang, EI
Tulloh, Caroline Stewart, EI
Turner, Robert Anthony, EI
Tyler, Stephen Eric, EI
Tyson, Kyle Stephen, EI
Vincent, Matthew Wharton, EI
Viviano, John Christopher, EI
Warner, Kay Elizabeth, EI
Warr, Kristofer Anders Rexling, EI
Warren, Sarah Jeanette, EI
Webb, Matthew Ryan, EI
Whetsel, Connor Ross, EI
Whitley, Trent Allen, EI
Williams, Yotta Gianna, EI

PROFESSIONAL ENGINEERS

Allison, Robert Joel, PE
Anderson, Tracy Chris, PE
Andrews, Jessica Lee, PE
Armijos, Manuel Augustin, PE
Arrigo, Melissa Catherine, PE
Aziz, Anthony Daniel, PE
Baker, Paul Alan, PE
Baker, Timothy Carl, PE
Barbato, Michele, PE
Bare, Gregory Charles, PE
Barnes, Anthony James, PE
Barney, Adam Joseph, PE
Barry, Daniel Francis, PE
Bartlett, Benjamin Maxwell, PE
Basetty, Sidhar, PE
Beatty, Hannah Brea, PE
Biada, Benjamin Joseph, PE
Blanchard, Troy Ehren, PE
Boudreaux, Jeremy Ryan, PE
Bowden, Clifton Ray, PE
Breaux, Jarod Joseph, PE
Breville, Ngoc-Lan Thi, PE
Bull, Micah Lee, PE
Burden, Michael Timothy, PE
Burgess, Gershon Hugh, PE
Burt, Bruce Alan, PE
Calloway, Barry L., PE
Campbell, Rance Adrian, PE
Capps, Clifford Escue, PE
Carr, Christopher Paige, PE
Christensen, Adam R., PE
Cicekli, Umit, PE
Cioffi, Luke Anthony, PE
Coffman, Walter G., PE
Cole, Christopher David, PE
Conrath, Richard D., PE
Coon, Eric Thomas, PE
Cowman, Kimberly Bunz, PE
Cox, Joshua William, PE
Crews, Niel Davenport, PE

D'Arensborg, Benjamin Clements, PE
Dally, Fred, PE
Davis, Lonnie Kyle, PE
Davis, Matthew Jared, PE
DeCuir, Michael George, PE
Dickerson, James Quinton, PE
DiMonte, John, PE
Dorothy, Paul B., PE
Dyson, Joshua K., PE
Eaton, Keith M., PE
Edwards, Donald Tayloe, PE
Edwards, Jarrod Scott, PE
Edwards, Jonathan Robert, PE
Eghtedar Doust, Saeed, PE
Ellerbe, Bridget Mappus, PE
Elliott, Jeffery Edwin, PE
Estess, Travis Ryan, PE
Evans, William Arthur, PE
Everhart, Charles Martin, PE
Fauchaux, Richard Paul, PE
Fecke, Patrick Joseph, PE
Feller, Scott Frederick, PE
Ferguson, Christofer Rolf, PE
Field, Jason Daniel, PE
Flood, Stacy Richmond, PE
Fontenot, Jeremiah James, PE
Franks, Adrian Tarik, PE
Galligan, Eugene Kyle, PE
Garland, Troy Lee, PE
Garrison, Charles Robert, PE
Garz, Jason Richard, PE
Gaudet, Corey Michael, PE
Ghimire, Jagannath, PE
Gilchrist, Kate Yoder, PE
Gillmor, Elizabeth Linda, PE
Girouard, Mott Ewing, PE
Gowdin, Derek Brandon, PE
Gokmen, Cuneey, PE
Golden, Kimberly Osborn, PE
Gordon, Keith Eugene, PE
Gosserand, Clarence Peter, PE
Green, Patrick Christopher, PE
Griffin, Frank Stanley, PE
Grote, Michael Leonard, PE
Guy, Christopher Stephen, PE
Haar, Dennis Wayne, PE
Haider, Chowdhury Omar, PE
Hampton, Michael Lee, PE
Hann, Cory Shea, PE
Harbin, Sean Richard, PE
Harris, Jerry Wayne, PE
Hartley, Laura Evans, PE
Hartmann, Thomas Wayne, PE
Hedlund, Scott Daniel, PE
Henderson, Annalisa Anderson, PE
Henderson, Jason Shane, PE
Herrington, Benny Earl, PE
Hildahl, Joni L., PE
Hillson, Jeffrey Neil, PE
Hobbs, Jennifer Claire, PE
Hodges, Floyd Ray, PE
Holman, Gregory B., PE
Holsinger, Scott D., PE
Honeycutt, Jonathan Nathaniel, PE
Hunley, Charles Anthony, PE
Hunt, Thomas Edward, PE
Hunter, Daniel T., PE
Iturralde, Luis Carlos, PE
Jackson, Nicole Lynn, PE
Jackson, Stephen Kyle, PE
Johnson, Andrew Dallas, PE
Johnson, Johnny Mac, PE
Johnson, Joy Kristina, PE
Jones, Brenton Michael, PE
Jones, Clinton Rhian, PE
Jones, Glenn Arnold, PE
Jones, William Joseph, PE
Judice, Andrew James, PE
Justilien, Chase Michael, PE
Kalb, Michael Jarrett, PE
Kaminski, Jeffrey Thomas, PE
Karim, Kazi R., PE
Kelly, Brian Scott, PE
Kirstein, Eric Joseph, PE
Kluttz, Michael Kenneth, PE
Knight, Stephen Finley, PE
Knippa, David Paul, PE
Kostelnik, Alois Joseph, PE
Kotter, Benjamin Lawrence, PE
Koubba, John Fredric, PE
Krantz, Eric L., PE
Kristek, Clayton Travis, PE
Kuntz, Ryan Robert, PE
LaBauve, Kendall James, PE
Lai, Zhidong, PE
Lane, Golden Erwin, PE
Lankford, Michael Todd, PE
LeBlanc, Michael Sean, PE
LeBouef, James Ryan, PE
Lenard, Benjamin Luke, PE
Leskin, Katherine Ann, PE
Lewis, Brian Elliott, PE
Lillich, Andrew Benjamin, PE
Logan, Kim McLean, PE
Lownsberry, Cory Michael, PE

Macleod, John Anthony, PE
Mandujano, Carlos A., PE
Mangan, Ryan William, PE
Marsh, Leo Ed, PE
Marsh, Mark Lee, PE
Martin, Luke Macduff, PE
Martinez, Alberto Eduardo, PE
McManus, Jacqueline Ferrell, PE
McNash, James Douglas, PE
Messmer, Joshua Alan, PE
Miller, Samuel Adam, PE
Mills, Robert James, PE
Miscenich, Christopher Stephen, PE
Mohlman, Justin Reed, PE
Monnerjahn, Christopher J., PE
Moreschi, Monte Joseph, PE
Mueller, Karyn Alyn, PE
Murray, David Lewis, PE
Myers, Amanda Catherine, PE
Nava Cuellar, Roberto, PE
Navaille, Louis P., PE
Norris, John Robert, PE
O'Connor, Jerome Paul, PE
Oakman, Andrew Thomas, PE
Oertling, Jeremiah Edouard, PE
Oldendorf, Brendon Paul, PE
Oradat, Gary Neil, PE
Palaz, Thomas Anthony, PE
Panakkat, Ashif, PE
Parmentier, Stephen Joseph, PE
Parsons, Timothy Allen, PE
Patel, Ashokumar Ravijibhai, PE
Pennington, Philip M., PE
Pettigrew, Lance Tyler, PE
Phipps, Jack Tilden, PE
Pies, Nathan James, PE
Pittman, Jay Coldon, PE
Potter, Travis James, PE
Potter, James Stratford, PE
Powell, Brent Edward, PE
Ramanurthy, Jayanth Ranganathan, PE
Rapp, Joel Ryan, PE
Reed, John Phillip, PE
Reynolds, Darren D., PE
Richard, Kelly James, PE
Richmond, Michael Holman, PE
Riviere, Joseph N., PE
Roberson, Cameron Eric, PE
Roberts, Jeffrey Daniel, PE
Saylor, Jason Gary, PE
Schieleit, Gregory Fritz, PE
Senior, Robert Nathan, PE
Serrano-Canals, Josinell Marie, PE
Shah, Vatsal Atulkumar, PE
Shepard, Brock Leon, PE
Sherman, Ryan Leon, PE
Shifflett, Michael Mason, PE
Shlyakov, Mark, PE
Shoemaker, Paul Joseph, PE
Shortess, Jennifer R., PE
Sirois, Roger Henry, PE
Smith, Scott Preston, PE
Smithson, Matthew Miller, PE
Sones, William Laphate, PE
Sours, Daniel James, PE
Starfish, Natalie Kay, PE
Styrant, Terry Patrick, PE
Suddeh, Blake L., PE
Sun, Jin, PE
Taromi, Reza, PE
Tewers, Matthew Ronald, PE
Theegala, Chandra Sekhar, PE
Thompson, Craig Stephen, PE
Thompson, David Wayne, PE
Thompson, Michael David, PE
Travis, Hunter Harrison, PE
Trenchesset, Pareena Termrungruanglert, PE
Trujillo, Shelley Renee, PE
Vaughan, Josh, PE
Velazquez, Ramon G., PE
Vittorio, Jennifer Michelet, PE
Viviano, Monica Kelly, PE
Waaso, Skyler James, PE
Wahn, Matthew James, PE
Walker, Terry Lee, PE
Wallsten, Mark James, PE
Watkins, Sheryl Stroble, PE
Watson, Christina Marie, PE
Weingart, James Paul, PE
Wheeler, Casey Stephen, PE
Whitmore, Brian Edward, PE
Williams, David E., PE
Williams, Matthew Gregory, PE
Windmann, Andrew Todd, PE
Wingfield, Brad James, PE
Wolf, Eric Michael, PE
Wolfe, Jason William, PE
Young, Rachael Leigh, PE
Zhou, Jian, PE
Zietlow, William Kurtis, PE

ENGINEERING FIRMS

Benchmark Group Alliance, PLLC, EF
Envirobusiness, Inc., EF
Pangaea Conservation & Compliance, LLC, EF

Ropes Courses Incorporated, EF
A. Epstein and Sons International, Inc., EF
Abeinsa Business Development, LLC, EF
Allstate Tower, Inc., EF
American Engineering Associates - Southeast, P.A., Inc., EF
Antioch International, Inc., EF
ASA Dally, Inc., EF
Bala Consulting Engineers, Inc., EF
Barry Moore LLC, EF
Barter & Associates, Inc., EF
Batture LLC, EF
Beacon Engineers, Inc., EF
Belaire Design, LLC, EF
Blackstone Environmental, Inc., EF
Bluewater Civil Design, LLC, EF
BSC Forensic Services, LLC, EF
Building Diagnostics, Inc., EF
Bury-HOU, Inc., EF
C.T.I. Consultants, Inc., EF
Callahan Engineering, Inc., EF
Campbell & Associates, Inc., EF
Campos Engineering, Inc., EF
Civil Engineers of Southwest Ohio, Inc., EF
Clear Creek & Associates, Inc., EF
Cormier Engineering, LLC, EF
Cypress Engineering and Development Group, LLC, EF
Dawood Engineering, Inc., EF
Dixit Consultants LLC, EF
Doucet & Associates, Inc. of Texas, EF
Duplantis Design Group SE, LLC, EF
E-W Associates, Inc., EF
EGS, LLC, EF
Elliott, LeBoeuf & McElwain, A Professional Corp., EF
Engineering Leadership Design Company, LLC, EF
Environmental Compliance Group, LLC, EF
Etico Consulting LLC, EF
Formwork & Scaffolding Engineering Services, LLC, EF
Full Circle Engineering & Construction LLC, EF
GeoCon Engineering and Material Testing, Inc., EF
Grenier Engineering, Inc., EF
Group14 Engineering, Inc., EF
Half Triflex, LLC, EF
Hayman Engineering Inc., EF
HMG Engineering, Ltd., EF
Howard Engineering and Associates, Inc., EF
HQC USA LLC, EF
Istre Engineering Services, Inc., EF
James L. Kline, PE, PC, EF
Jedson Engineering Inc., EF
Kraemer Consulting Engineers, PLLC, EF
KTD Consulting Engineers, Inc., EF
Lake Superior Consulting, LLC, EF
Lamb-Star Engineering, L.P., EF
Leslie E. Robertson Associates, R.L.L.P., EF
Logical Systems, LLC, EF
M/E Engineering, P.C., Inc. of NY, EF
MEL Engineering Consultants, LLC, EF
Murfee Engineering Company, Inc., EF
North Alabama Fabricating Company, Inc., EF
Obsidian Fire Consulting, LLC, EF
Page Southerland Page, Inc., EF
Paragon Structural Engineering, Ltd., EF
Parsons Engineering, Inc., EF
Perkins Engineering Consultants, Inc., EF
Phoenix Fabricators and Erectors Inc., EF
Pollution Management, Inc., EF
Powell Electrical Systems, Inc., EF
Prattini Engineering, LLC, EF
Progressive Engineering & Construction, Inc., EF
Promus Engineering, LLC, EF
RLK Design Services, LLC, EF
Robert A. Davis PE, LLC, EF
Robert and Company, Inc., EF
Rooftop Anchor, EF
Sensebe & Associates, Inc., EF
Sentinel Power Services, EF
Shields Engineering Group, Inc., EF
Short Elliot Hendrickson Inc., EF
Smart Building Systems, Inc., EF
Southern Lifestyle Development Company, LLC, EF
Sponseller Group, Inc., EF
SQ Environmental, LLC, EF
TCI Architects/Engineers/Contractor, Inc., EF
Tex-Petro Services, LLC, EF
Tylk Gustafson Reckers Wilson Andrews, LLC, EF
Vasquez Engineering, LLC, EF
Wenck Associates, Inc., EF
WSP USA Corp, EF
Roberto, Robert Aurelius, EF

SPONSOR PROVIDERS

Fire Marshal Association of Louisiana, CPD

PRESIDENTIAL PRIVILEGE

Craig D. Dooley, PE



Craig D. Dooley, PE
Louisiana Engineering Society President

Thank you, the members of the Louisiana Engineering Society, for electing me to serve as your president. I regard my election as an honor and a privilege, and I regard it as a particular opportunity to serve the engineering profession. I must begin by giving sincere thanks to Alan Krouse who gave me my first opportunity to serve as a State Director on the State Board.

I must also especially thank Ron Rodi, who has served as the legislative committee's chairman for longer than we deserved. I know you join me in lauding Ron for his years of service. He has just given his last report as committee chairman. My sincere hope is that Ron will enjoy his retirement, but not so much that we will not be able, from time to time, to interrupt his leisure so that we can enjoy his rich insights on the many issues that affect the engineering profession.

Ron's retirement does give me the pleasure of introducing our new chairman on the legislative committee: Miles Williams. Miles just completed serving his term on LAPELS Board, and has now come to help LES in protecting and promoting the engineering profession. I look forward to working with Miles this coming year.

Looking back, our last year was very productive. We held the Tri-State Engineering Society Conference at the Beau Rivage in Biloxi, Mississippi. We must thank the many vendors, speakers, and attendees who joined us in Biloxi; and to the Mississippi Engineering Society (www.msengsoc.org),

who took the lead on hosting the conference. Thanks also to David Hartley who spoke about manufacturing satellite propulsion subsystems in a fixed-price environment, and to Jim Curry from NSPE, who attended our meeting.

The NPSE also produced their final report, Race for Relevance, July 2013. I want to take four points from that report to emphasize this year:

- Recruitment and member retention;
- Effective use of social media; and
- Proactive political effort in issues directly affecting the engineering profession;
- Organizational culture in the 21st century.

Looking at our organization, LES claims 1,529 members. Our average age is 52. We are mostly Baby Boomers. In the August 2013 President's message, Jason Thornhill noted that our membership was declining. To counter that trend, I am now announcing a recruiting contest. Let us see which chapter excels in recruiting, both in the total number of members and as a percentage of growth. The recruitment contest will end with the winning chapter being recognized at the 19th Annual JESC in January 2015.

Let me kick off the contest with these suggestions from Race to Relevance: As memberships come due for renewal, let other members of their chapter actively encourage renewals.

As we think about renewing memberships, we must also consider that with an average age of 52, our membership is also aging. In order to sustain LES, we must recruit new members from the younger generations, Millennials and Generation X, who live in a new and different world from the Baby Boomers. The Baby Boomers' outlooks and values differ greatly from those of younger generations. Importantly, for them, the traditional methods of marketing have fallen by the wayside. For the younger generations, marketing means social media.

Social media also operates by its own rules, and we must learn and understand those rules. And here is a very important rule: Giving content away—for free—is the fuel that propels social media. Let me mention another rule that Monica Bussolati (www.bussolati.com) offered at the NPSE convention, a key

CALENDAR OF EVENTS

August 2014

- 1 Honors & Awards Nominations begin

September 2014

- 9 Alexandria Chapter Meeting & Licensing Ceremony
10 Shreveport Chapter Meeting & Licensing Ceremony
11 Monroe Chapter Meeting & Licensing Ceremony
11 Bayou Chapter Meeting & Licensing Ceremony
12 LES Board Meeting – Shreveport, LA
15 Life Safety Code Seminar – Shreveport, LA
16 Lake Charles Chapter Meeting & Licensing Ceremony
17 Life Safety Code Seminar – Baton Rouge, LA
17 New Orleans Chapter Meeting & Licensing Ceremony
19 Life Safety Code Seminar – Covington, LA
23 Lafayette Chapter Meeting & Licensing Ceremony
25 Baton Rouge Chapter Meeting & Licensing Ceremony

October 2014

- 17 Deadline for copy, Louisiana Journal, November issue

formula for effectively using social media. The formula is simply: 4-1-1

- Four: We using social media, promote other websites four times
- One: Promote yourself once
- One: Sell something once.

Among the many things we can sell, I think the most important is membership in LES.

On the other two points, I would like to challenge each chapter to be proactive in the political arena. Talk with the members of the Louisiana legislature, especially people who are on key committees who directly affect our profession. I strongly urge each chapter to make personal contact with someone in the fall, and then to make another contact during Engineers' Week. We want to emphasize the importance of the engineering profession.

While the engineering profession remains vital, nothing survives without change. When Jamie Notter (www.jamie.notter.com) spoke about "Organizational Culture in the 21st Century" at the NSPE convention, he said that we must connect what is valued to what drives success. He said that organizations in this century must embrace decentralization, transparency, and experimentation. Organizations that have done so include Whole Foods (www.wholefoodsmarket.com), Zappos (www.zappos.com), and Google (www.google.com).

I want us to emulate those organizations, keeping those three traits in mind, changing how we do things as we work to retain and recruit new members, master the potential and promise of social media, and proactively involve ourselves into the social and political spheres that concern our profession. I ask that you contact your either your local chapter president or Michael Thomassie, LES membership chairman, if you have any further suggestions for improving membership.

Finally, I look forward to serving LES this year as we remain relevant and vibrant, and grow our organization for the future. Thank you all.



Spread the Word about LES!!!

Sponsor a new LES Member by inviting your colleagues to join you as a member of the only organization representing the interest of all engineering professionals.

- Invite them to join you at a chapter event
- Encourage them to visit the LES and NSPE websites
- Send the State Office a list of colleagues you would like to nominate for membership and we will send them a membership packet, with your name as their sponsor.

We appreciate your participation in membership recruitment!

For each new member that lists you as a sponsor, LES will send you a free gift!

You can choose from:
LES Tumbler • LES Umbrella • LES Polo Shirt



Like us on Facebook

www.facebook.com/louisianaengineeringsociety

WELCOME NEW MEMBERS

Baton Rouge Chapter

Tj Stokes, EI Associate Member
Robert Behringer, EI Associate Member
Under 30
Meaghan Coco, EI Associate Member
Under 30
William Buck, PE Member
Robert Mills, PE Member
Russell Owens, PE Member
Kate Pollins, PE member
John S. Weres, PE Member
Benjamin H. Adams, Student Member
Alyse Aldridge, Student Member
Sarah Belanger, Student Member
Robert Bruzdoski, Student Member
Julius Codjoe, Student Member
Austin Daspit, Student Member
Thomas Everett, Student Member
Harry Frederick, PE Member
John Gutentery, PE Member
Nelida Herrera, Student Member

Bradley Jacobs, Student Member
John Lorence, Student Member
Daniel Lorence, Student Member
Chelsea Meaux, Student Member
Sean P. Moore, Student Member
Katharine A. Murray, Student Member
Timothy M. Patterson, Student Member
Merrick Patton, Student Member
Christopher M. Paul, Student Member
Taylor L. Robinson, Student Member
Andrew Roussell, Student Member
Christopher D. Rowan, Student Member
Kelsey E. Schmaltz, Student Member
Adam D. Steed, Student Member
Alan W. Tipton, Student Member
Andrew Toups, Student Member
Emily Weigand, Student Member

Bayou Chapter

Amber Plessala, PE Member

Lafayette Chapter

Stephen Callegari, PE Member
Beau Istre, PE Member
Patrick Kenney, PE Member
Clint McDowell, PE Member
Joseph Young, Student Member

Monroe Chapter

Cinnamon Gooding, PE Member

New Orleans Chapter

Eden Thomas, EI Associate Member
Karson A. Kall, PE Member
Timothy L. Kay, PE Member
Dustin S. Walker, PE Member

Shreveport Chapter

Jeffery R. Anderson, PE Member

Non Resident

Jaideep Chatterjee, PE Member
Huesker, Inc,
Corporate Sustaining Member

SOCIETY NEWS

Brenda Gajan, LES Executive Director



CONGRATULATIONS ON ACHIEVING A MAJOR MILESTONE IN YOUR ENGINEERING CAREER!



We would like to recognize your achievement and invite you to a Certificate Presentation Ceremony.

This is a chance to be recognized for your achievement in front of your peers, and network with others in the Engineering Profession. We encourage you to invite family and friends to celebrate this monumental event.

You may RSVP via email to les@les-state.org. Be sure to include your name, license number, & how many guests that will attend with you. You may contact Mrs. Brenda Gajan, LES Executive Director, at (225) 924-2021 or at brenda@les-state.org if you have any questions.

Alexandria Chapter

Tuesday, September 9, 2014 @ 11:30 AM
Westside Regional Library, 5416 Provine Place

Baton Rouge Chapter

Thursday, September 25, 2014 @ 11:30 AM
Juban's, 3739 Perkins Road

Bayou Chapter

Thursday, September 11, 2014 @ 6:00 PM
Bayou Country Club, 900 Country Club Drive

Lafayette Chapter

Tuesday, September 23, 2014 @ 11:00 AM
Don's Downtown, 301 E. Vermillion Street

Lake Charles Chapter

Tuesday, September 16, 2014 @ 11:30 AM
Pat's of Henderson, 1500 Siebarth Drive

Monroe Chapter

Friday, September 12, 2014 @ 12:00 Noon
Catfish Cabin, 1400 Louisville Ave.

New Orleans Chapter

Wednesday, September 17, 2014 @ 6:30 PM
Zea Rotisserie & Grill, 1525 St. Charles Ave.

Shreveport Chapter

Wednesday, September 10, 2014 @ 11:45 AM
Petroleum Club, 416 Travis Street

MEMBERSHIP COMMITTEE

Michael Thomassie, PE - mthomassie@ddgpc.com

I would like to start by thanking all those LES members who made a difference for the 2013-2014 LES year. The creation of the Student Chapter at LSU and addition of 163 ULL Student Chapter members were important accomplishments that should lead to long term members of LES.

A FEW THINGS IN THE WORKS FOR 2014-2015 INCLUDE:

- ✓ We are making an effort to get Public Sector Engineers more involved in LES.
- ✓ Craig Dooley announced a Membership Recruiting Contest in his Presidential Message.

- ✓ We making an effort to recruit Corporate Sustaining Members.
- ✓ Plans are in the works to establish a Fun event for all members. Details to follow in the next few months.

Please let me know if you have any ideas to improve the membership experience or recruit new members.



Michael Thomassie, PE
Membership Committee Chairman

MNSPE IS OFFERING A FALL PE EXAM PREP COURSE AND REGISTRATION IS NOW OPEN

Upon registering, please let them know that you were referred by LES.
Access PE course information and online registration here: <http://www.mnspe.org/pe--fe-exam-prep.html>

ALEXANDRIA CHAPTER

By Jennifer A. Gemar, PE

The summer months melted away at a record pace and we are now on the verge of another year. I want to give a special thanks to last year's president, Luke Miller, along with all of our other officers and chairmen that worked hard to make it another successful year for the chapter. We hope to continue these efforts as we head into the new year. The 2014 – 2015 officers for our chapter are:

President: Jennifer Gemar, PE
1st Vice President: Heath McGuffee, PE
2nd Vice President: Kyle Randall, PE
Secretary-Treasurer: William Elliott, PE

Our year starts on September 9th with our first chapter meeting. The meeting will be held at the Westside Regional Library in Alexandria with plans to present on ethics. During this meeting LAPELS will also present the PE and EI certificates to

newly licensed professionals. I encourage everyone to make an effort to attend the meeting and show your support as we congratulate them on their achievement. The rest of our meeting dates are as follows: October 7th, November 4th, December 2nd, January 6th, March 3rd, April 7th, and May 5th. If any of our chapter members are interested in speaking at a future meeting or have input on ways to better the chapter, please feel free to contact me. We are always interested in making improvements and will listen to any comments, critiques or feedback you may have.

I am looking forward to this year and serving as your chapter's president. With your support and participation, I know we can make this another great year.



BATON ROUGE CHAPTER

By Chad A. Bacas, PE

I hope everyone has made time to slip in a little vacation or time away from work and enjoyed the summer before it comes to an end! I'm humbled and honored to serve as the incoming President of the Baton Rouge Chapter. I know that I will have some big shoes to fill from our Past President Chris Knotts. I would like to offer my great appreciation for what I have learned under his leadership. The new Board of Directors for the Baton Rouge Chapter is already hard at work and has started filling up our agenda for the upcoming 2014-2015 year with exciting events that makes LES the great society it is. I'm looking forward to working with our new Board of Directors listed as follows:

President Elect: Jacob Loeske, PE
Vice President: Shaun Sherrow, PE
Secretary/Treasurer: Carolina Herrera, PE
Directors: Lynne Roussel, PE and Kevin Beyer, PE
Younger Member Chair: Michael Somme, PE
Past President: Chris Knotts, PE

With the great success of our Corporate Sustaining Membership Program over the past 2 years, we will continue to offer this program looking for the same generosity from our Platinum and Gold sponsorship levels of \$1,000 and \$500, respectively. We know that without the support of the many companies in our community the missions of LES would not be possible or sustainable. This program not only offers great incentives to the companies participating, but also helps LES and its members stay active and prosperous in their

engineering professions. One new feature of our Platinum level this year will be an added station sponsor for our annual Clay Shoot Tournament held in October.

Our other upcoming events for the year will begin with a joint LES/ASCE luncheon on August 21st. We are still lining up our speaker (possibly a representative from CPRA) for our September 25th meeting, but we have confirmed the presentation by LAPELS of the PE and EI certificates to the newly licensed professionals. In October, as mentioned previously, we will have our 3rd Annual Skeet Shoot Tournament on Friday the 10th. This is a great event to attend and offers a chance to warm up before duck season gets going! Also in October we will have our general meeting held on the 23rd, with our guest speaker Jeff Burst from LADOTD speaking on Design/Build Alternative Delivery Methods. Our typical Open-House Forum and Ethics Seminar at our annual LSU/SU Student Jambalaya Function will be held on November 6th. You may have heard that Richard Savoie retired from LADOTD, but we won't let him retire from being the chef: great jambalaya! For our December 11th meeting, we are looking forward to a surprise new venue accompanied by a great speaker. Be on the lookout for more details to follow. I'm looking forward to seeing all of our members at these upcoming events. Please feel free to invite any potential new members so they can enjoy the same networking of people, programs and services that LES has to offer.



LAFAYETTE CHAPTER

By Ashley Simon, PE

The Lafayette Chapter Officers for the 2014-2015 year are:

President: Ashley Simon, PE
Vice President: Mark Aymond, PE
Secretary: Liesl Boudreaux, EI
Treasurer: Dr. Stephen Dufreche, EI

The chapter meetings will kick off in September with the Licensing Ceremony held in conjunction with an Ethics Presentation and luncheon. The meeting will be held at Don's Downtown on September 23, 2014. We are eager to meet and welcome the new registrants.

We are excited for the upcoming year and are working on selecting meeting topics and presenters. Currently we are looking into touring the Energy Research Facility in Crowley, having a presentation on LEED building design and getting an update on the Louisiana Public Bid Law.

We are working to increase attendance at the monthly meetings and Chapter Membership. If anyone knows a potential new member or a member who has not attended a meeting before, encourage them to join us. Additionally, if any members have a suggestion on a topic, a presenter or even a new chapter activity, please contact one of the Lafayette Chapter officers.

MONROE CHAPTER

By Jim Ellingburg, PE

As we begin this year with LES, I would like to thank the chapter leadership we have had over the past year and also welcome this year's leadership team. Each individual has made a commitment to serve the Monroe Chapter membership by giving of their time and energy. The Monroe Chapter officers for the 2014-2015 year are as follows:

President: James S. Ellingburg, PE
 1st Vice President: Brad Anzalone, PE
 2nd Vice President: Brant Jones, E.I.
 Secretary/Treasurer: Jody Smith, PE
 Immediate Past President: Michael J. Pippen, PE

This group of officers will meet in early August to plan the monthly membership meetings and other events throughout this coming year. I would like to encourage any Monroe

Chapter member to contact one of the officers if you have ideas or know of events that would benefit our membership as a whole.

Our first meeting of the year is scheduled for noon September 11, 2014. Additional details about the meeting will be included in the chapter newsletter to be sent out prior to that date. We will have individuals with the State LES office and LAPELS Board Members in attendance to conduct a Licensing Ceremony for new registrants in our Chapter. Meetings throughout the year will be the second Thursday of each month beginning at noon, and will feature a technical topic that will be presented by a guest speaker. One (1) PDH will be awarded to each member who attends.



NEW ORLEANS CHAPTER

By Glenn Orgeron, PE

During the regular May 2014 meeting of the New Orleans Chapter, the following were elected to the 2014-2015 Board of the New Orleans Chapter of the Louisiana Engineering Society.

President: Glenn Orgeron, PE, J.D.
 1st Vice President: Robert Mejia, PE
 2nd Vice President: Roy Phelps, PE
 Secretary/Treasurer: Bodin Hugger, PE
 Past President: Lee Alexander, PE
 Director: Nick Musmeci, PE
 Director: Richard Van Wootten, PE

Also, please welcome Craig Dooley, PE, who is both a member of our Chapter, but more importantly, President of the Louisiana Engineering Society. Craig hails from Slidell and is an engineer with Lockheed Martin at the Stennis Space Center.

Below, we provide an update on a matter that the New Orleans Chapter has taken up as a result of an announced budget squeeze affecting the University of New Orleans.

In response to a June 15, 2014 Times Picayune article titled "UNO looks at eliminating some academic programs," we was sent a letter to Dr. Peter Fos, President of the University of New Orleans, on behalf of the New Orleans Chapter of the Louisiana Engineering Society urging the University of New Orleans to keep all of its engineering curricula as currently offered. We emphasized that UNO engineers are in high demand, and with South Louisiana on the cusp of a significant industrial and economic expansion, the demand for engineers in our region will only expand. Although we understood that the University is facing a budget squeeze, we urged Dr. Fos, the Deans, Administrators, and Faculty not to curtail the engineering programs which are and have been for many years one of the University's hallmarks. Dr. Fos was very gracious in his response concerning the overall evaluation of all UNO programs and stated that he would not make any final decisions without consulting all of the university constituencies, including the New Orleans Chapter of the Louisiana Engineering Society.

David Gereighty and Nick Musmeci, President and Vice President, respectively, of the Society of Tulane Engineers, sent similar correspondence to Dr. Fos emphasizing the importance of UNO's engineering programs and the Science, Technology, Engineering, and Math (STEM) core courses that provide the groundwork for the engineering curricula. Doug Mader, Chairman of the New Orleans Section of the IEEE, sent a letter to Dr. Fos providing support for UNO's engineering programs and UNO's role in the region. The UNO situation is also on the agenda of the International Automation Society. We are putting together a

joint team of local professional engineering societies and industry representatives to offer to meet with Dr. Fos and the College of Engineering Dean and staff to discuss this issue in further detail.

It also has become evident that we need champions in the Legislature to pick up the banner for not only maintaining, but growing the STEM programs available to students at the University of New Orleans. As a result, initially, we have written to Senator John Alario, President of the Louisiana Senate, who resides in our area, to seek his assistance in strengthening the finances provided for post-secondary education, and, in particular, to UNO. Further, we emphasized the need for further educational opportunities in this region and the fact that the Greater New Orleans area is begging for more technically trained, engineering and science graduates to take advantage of the growing economic resurgence and technical entrepreneur opportunities in our area. Senator Alario was supportive in his response and indicated that he had expressed his concerns with Dr. Fos. Michael Smith, Vice President of Engineering with PEMBA Lighting & Automation, Inc. has also written to Senator Alario in support of the UNO engineering programs. We will expand our effort to gain further champions in both the Louisiana House and Senate. The region cannot exist or advance on tourism alone.

If you or your company would like to assist in this effort to show support for continuing and even expanding the engineering programs offered at the University of New Orleans, please let us know, and feel free to write to Dr. Fos and/or to your local State House or Senate member urging such support.

As the Chapter moves forward, we will meet for an annual Planning and Reassessment Retreat on August 16, 2014. There we will look at where we have been over the past year, what we have done well, what we can improve on, and how we can provide value so that we remain relevant to the interests, desires, and needs of our members.

On our website, www.no-les.org, is a tentative listing of our meeting/event dates; we will be alternating with luncheon and evening meetings so that we may draw good audiences and provide timely, relevant programs, all in cooperation with various speakers who may be available only at certain times. We will fill in the blanks as to projected speakers, times, locations, and specific events during the August Retreat.

We look forward to a dynamic 2014-2015!





The National Society of professional Engineers (NSPE) has named Theodore H. Thompson, PE, F.NSPE, to its 2014 class of Fellow Members. The Fellow membership grade honors Professional Engineers who have demonstrated exemplary service to their profession, society and their community. Since its creation in 2000, less than one percent of all NSPE members have advanced to this highest membership rank.

Ted is currently semi-retired working part-time for Guinn Construction, LLC of Jennings, Louisiana and also as an adjunct faculty member at McNeese State University, where, since 2000, he teaches one to three engineering courses a semester. He retired from F. Miller & Sons, LLC/F. Miller Construction, LLC a general contractor in Lake Charles, LA, in 2009, where he worked for thirty-five years; starting as a field engineer and working up to head of the company.

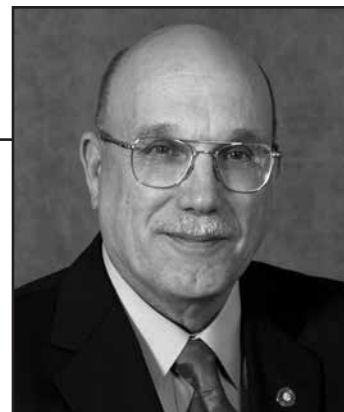
He is a Vietnam veteran, retiring in 1999 as a Lieutenant Colonel with 29+ years of service on active duty, National Guard, and US Army Reserve.

Ted is currently chairman of the LES Ethics committee and has chaired several other committees over his tenure, while

holding the positions of Lake Charles Chapter President for five times and LES President. He continues to serve the profession and Louisiana as a member of the LAPELS board, currently serving as vice chairman. Ted also volunteers his time at the national level by serving on the NCEES FE Exam committee and the NCEES EPE committee.

He thanks the LES board for his nomination and is humbled by the honor. He has always encouraged LES members and his students to give back to their school, profession, and community, which have made them successful.

His interests are many and include teaching, FE Exam question writing, attempting to stay out of the woods and sand, while playing golf, model railroading, collecting dining car china, flying, and his grand daughters to name a few. He and his wife of 47 years, Martha, reside in Sulphur, LA.



**Theodore H. Thompson,
PE, F.NSPE**

2014 NSPE MEETING, WASHINGTON, DC

Susan Richard, PE

Members of the board of LES attended the NSPE Annual Meeting in Washington, DC, that was held July 1-6, 2014. Attendees included Craig Dooley, President; Heather Klingman, First Vice-President; Susan Richard, NSPE Representative; Alan Krouse, PEPP Chairman; and Chris Richard, NSPE PEPP Chairman. The meeting was very well attended and included leadership tracks for state leaders in attendance as well as professional development offerings. The conference included time for attendees and their families to enjoy the Independence Day activities offered at the nation's Capitol.

The Board of Delegates meeting included adoption of the Strategic Plan developed by NSPE through several years of subcommittee work. The Plan is an initiative outlining the direction of NSPE to achieve relevance to the



NSPE Board of Delegates meeting, July 5, 2014, Washington, DC.

engineering community, to improve service to its members. The meeting also included elections of the Member at Large and Vice President. Neil Wright of Virginia was elected as Member at Large;

Kodi Jean Church of Minnesota was elected Vice President. Congratulations to these dedicated professionals.



Susan Richard, PE

NSPE continues to reach out to members to find out "what NSPE can do for you." NSPE invites all members to join us at the next annual meeting in July 2015 in Seattle, Washington. More details will be posted in early 2015 at their website www.nspe.org.

LEGISLATIVE COMMITTEE REPORT

Ronald J. Rodi, PE, Chairman



Ronald J. Rodi, PE
*Legislative Committee
Chairman*

The 2014 Regular Legislative Session officially ending June 2th. The session again consisted mostly of budgetary and educational debates with a few bills that impacted the engineering profession. LES continues to be respected as a leader in promoting professionalism in the laws affecting all engineers and our responsibility to protect the health, safety and welfare of the public.

Day at the Legislature, an event that we will likely continue to help sponsor and nurture.

Following is a summary of the bills that were tracked and their current status:

This session LES partnered with ASCE, ACEC, The Good Roads Coalition and others in an Infrastructure Awareness

Bill	Disposition	Description
SB 158	Deferred	Provides for the licensure of professional engineers currently licensed in other jurisdictions
SB 341	Signed by Governor	Provides for limitations relative to actions or rules requiring modification of certain existing community water systems
SB 416	Deferred	Provides relative to the Louisiana Professional Engineering and Land Surveying Board; ACEC bill to add two seats
SB 468	Signed by Governor	Provides relative to contracts for public bid law changes
SB 680	Signed by Governor	Provide for CM@Risk method for public contracts.
HB 137	Deferred	Authorizes payroll deductions for dues for membership in the Louisiana Engineering Society
HB 319	Signed by Governor	Revisions to business corporation law; specific references to the use of terms "engineer", "architect" or "surveyor"
HB 964	Deferred	Provides for overhead power line information identified on Dept. of Transportation and Development public work projects

Ongoing items:

1. Continue to work with ACEC and the state Ethics Board to provide an opinion on how private practice engineers are treated under the Louisiana Code of Governmental Ethics;
2. Re-submit our LES bill to approve a payroll deduction for state-employed engineers to pay their LES dues;
3. Work with LAPELS on licensing requirements for licensed engineers from other jurisdictions;
4. Continue working with Louisiana's DHH to draft the standards for water system design; and
5. Continue to monitor an initiative to require the inclusion of overhead power lines on plans for public works projects.

Having served my last term as Chairman of the State Legislative Committee, I am honored to have represented LES and the engineering profession overall on many interesting and sometimes challenging issues. I can't say enough about Gerald Simmons' continued contributions to our legislative efforts. His wisdom, advice and "know-how" have been essential for us in tracking bills, developing legislative strategies and setting up meetings with legislative leaders. The legislative activities are a team effort with strong leadership and decision-making by the Board of Direction; Chapter legislative committees connection to legislators in their communities; member participation to provide testimony and the Stae Office's role in with the general membership as well as assisting in compilation of materials and related information.

LES 2015 HONORS & AWARDS

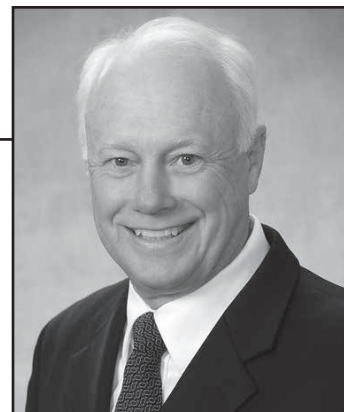
Brenda Gajan

LES will honor eight engineers who have achieved high levels of professionalism, technical ability or civic support. The desire of the Society is not only to recognize the distinguished service of these individuals, but to also encourage and inspire other engineers to take a greater interest in their specific field. Please give serious thought to nominating someone in your professional area of expertise for one of the awards listed below. Nominations should be made through your local chapter and are due to the State Office by November 7, 2014. The eight categories are:

- 1) **A. B. Paterson Medal for an Engineer in Management**
- 2) **Andrew M. Lockett Medal for Civic Activities**
- 3) **James L. Todd Technical Accomplishment Medal**
- 4) **Leo M. Odom Award for Service to the Profession**
- 5) **Charles M. Kerr Public Relations Award**
- 6) **F. Hugh Coughlin Young Engineer Award**
- 7) **Waldemar S. Nelson President's Award**
- 8) **Dudley Hixon – Bobby Price National Professional Achievement Award**

LOUISIANA ENGINEERING FOUNDATION

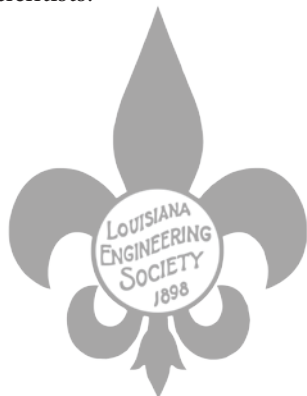
Alan Krouse, PE



Alan Krouse, PE

It is an honor to serve as the Louisiana Engineering Foundation President however it will be impossible for me to accomplish in my tenure what Chris Richard accomplished in his term. Prior to Chris taking over as President we had a mortgage on the Engineering Center and the budget was covering all the expenses but not reducing the principle. Chris developed an ambitious five year plan to pay off the building in conjunction with creating scholarships. In our initial meeting to discuss the plan we were thinking we would get numerous small donations and a dozen scholarships established via \$10,000 donations. Well needless to say we underestimated how generous companies and individuals would be! We paid off the building last year and to date twenty three scholarships have been established. Thank you Chris and thanks to all who donated to make this possible. The other new LEF officers are Jason Thornhill Vice President, Susan Richard Director, John Plaisance Director, Sec.-Treas. Byron Racca, Past President Chris Richard and all LES Chapter Presidents.

For a list of the established scholarships please see the LEF website. Also on the website is a link for students to fill out a scholarship application online so if know of someone who is interested please share this with them. One additional piece of news to share is that we have added a new tenant to the Engineering Center Building, The Louisiana State Board of Professional Geoscientists.



Protecting your community's drinking water has never been more important than NOW.

The Drinking Water Revolving Loan Fund (DWRLF) is providing low interest loans and technical assistance to public water systems in Louisiana.

Learn if your water system is eligible, and how to apply to today!

Visit us at www.facebook.com/DrinkingWaterRevolvingLoanFund
or www.dhh.la.gov/DWRLFPSGuidance.



DRINKING WATER
REVOLVING LOAN FUND
A PROGRAM OF THE DEPARTMENT OF HEALTH AND HOSPITALS



2014 TRI STATE ANNUAL MEETING HIGHLIGHTS



THANK YOU TO THE 2014 TRI-STATE EXHIBITORS & SPONSORS

LES would like to recognize the following companies for their support at the 2014 Tri State Annual Meeting held at Beau Rivage Resort & Casino in Biloxi, MS:

EXHIBITORS

Advanced Drainage Systems, Inc.
Alabama Board of Licensure for PE & PLS
Bagley College of Engineering - MS State University
Brand Energy Solutions, LLC
Carneuse Lime & Stone
Cardno TBE
The Crom Corporation
Delta Process Equipment

G360, LLC
Gulf Coast Underground
Huesker
K&K Systems, Inc.
Mississippi 811, Inc.
Oldcastle Precast
Premier Concrete
Southeastern Tank, Inc.
Storm Services

Sunbelt Sealing, Inc.
T.A.W. Power Systems, Inc.
Taylor Power Systems, Inc.
Tensor International Corporation
Terracon
Tesco Controls, Inc.
Tnemec/Technical Coatings Services
TOPCOR Services, LLC
UPS
Vector Graphics, Inc.
Vista Engineering
Yates Engineers

GOLD SPONSORS

Alabama Asphalt Pavement Association
Cardno TBE
Gresham, Smith & Partners
Jordan, Kaiser & Sessions, LLC
Louisiana Pavement Association
Mississippi Asphalt Pavement Association
MSU, Bagley College of Engineering
Neel-Schaffer, Inc.
Waldemar S. Nelson & Company
Stantec

SILVER SPONSORS

Dunn Roadbuilders, LLC
ITS Regional, LLC
Lazenby & Associates, Inc
Michael Baker Jr, Inc
Waggoner Engineering, Inc
Yates Engineering
BRONZE SPONSORS
Kean Miller, LLP
UPS

SAVE THE DATES

Mark your calendars for the 2015
JESC & Tri-State Conferences!!!

January 28-29, 2015 @ the Hilton Lafayette
June 27-30, 2015 @ the Sandestin Resort - Destin, FL



**Louisiana Engineering Society presents:
Three 8hr Life Safety Code Seminars**

**by Robert Miller
The Building Code Institute, LLC**

Approved AIA Provider

**Approved Florida
Provider**

**September 15, 2014
8:00am – 4:30pm
Courtyard Marriott
Shreveport, LA**

**September 17, 2014
8:00am – 4:30pm
Embassy Suites Hotel
Baton Rouge, LA**

**September 19, 2014
8:00am – 4:30pm
Courtyard Marriott
Covington, LA**

Earn 8 PDH's at each Seminar!!

This one-day 8 hour credit seminar for the year 2014 will focus on the **Significant Changes to Life Safety Issues** of the newly adopted **2012** editions of the of the **NFPA 101 Life Safety Code** and the **International Building Code**.

The seminar will address the changes related to new construction and existing facilities related to:

- **Occupancy Classification,**
- **Components serving Means of Egress related to specific Occupancies**
- **Construction and Fire and Smoke Barriers,**
- **Compartmentation and Firestopping,**
- **Life Safety Systems such as Fire Alarm and Sprinkler systems, and**
- **Accessibility requirements**

A workbook will be provided which can be used for future reference of the issues covered in the seminar.

Below is the **REGISTRATION FORM**. Please check the seminar you would like to attend.

☐ September 15, 2014 in Shreveport ☐ September 17, 2014 in Baton Rouge ☐ September 19, 2014 in Covington

Name: _____

Address: _____

City: _____ State: _____ Zip: _____

PhoneNumber: _____ FaxNumber: _____

Email: _____

REGISTRATION: ☐ **Society Member \$215** ☐ **Non Member \$265** ☐ **Visa** ☐ **M/C** ☐ **Discover**
(Lunch is included in registration cost.) *(We do not accept American Express)*

Card No. _____ Exp.Date _____

Signature: _____

Mail checks and registration to: LA Engineering Society, 9643 Brookline Ave., Ste. 116 Baton Rouge, LA 70809

You may fax your registration to: (225) 924-2049 or email to les@les-state.org

For more information please visit our website: www.les-state.org

If you have any questions, please call the LES office at (225) 924-2021

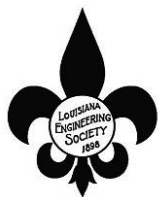
Sorry, no refunds will be given after August 31, 2014

Seating is limited to 30 participants at all seminars, so register now!!

Call the Courtyard Marriott in Shreveport (6001 Financial Plaza, Shreveport, LA 71129) at 318-686-0545 for room reservations

Call The Embassy Suites Hotel (4914 Constitution Ave, Baton Rouge, LA 70808) at 225-924-6566 for room reservations

Call the Marriott Hotel in Covington (101 Northpark Blvd, Covington, LA 70433) at 985-871-0244 for room reservations



Seminar will be held at:
 Springhill Suites
 1551 West Prien Lake Road
 Lake Charles, LA 70601
 Call 337-474-1112 for reservations

Louisiana Engineering Society presents: 8 Hour Life Safety Code Seminar

by Warren Bonisch, P.E.

Aon Fire Protection Engineering

September 24, 2014

In Lake Charles, LA

8:00am – 4:30pm

Lunch will be served

An introduction to NFPA 101, the *Life Safety Code*, for architects and engineers less familiar with the content and intent of the code; The 8 hour class room instruction will cover the major provisions of the 2012 *Life Safety Code*, with focus on the following chapters:

- Core Chapters 1 thru 11
- Building Rehabilitation, Chapter 43
- Occupancy Chapters
 - Assembly
 - Health Care
 - Residential
 - Business

The significant changes that have occurred in the *Life Safety Code* since the 2009 edition will be pointed out to the attendees, such as:

- New definitions
- Elevators for occupant controlled evacuation
- Normally unoccupied building service equipment support areas
- Rewrite & expansion of Ch. 8 provisions on opening protective
- Carbon monoxide detection
- Health Care chapter provisions to make more homelike

Attendees should have a basic level of code knowledge, and basic understanding of the structure, goals and objectives of such codes. Presentation will be in the form of PowerPoint slides and verbal instructional discussions. **It is highly recommended that attendee bring a copy of 2012 NFPA 101 to this class.**

Attendees will learn:

- Recommended method on the use and application of the *Life Safety Code*.
- Identification and technical requirements of major provisions in 2012 NFPA 101 *Life Safety Code*.
- Background on the code intent.
- Major changes that have occurred in the 2012 *Life Safety Code*.

**Course Registered with
 AIA**

REGISTRATION FORM

Name: _____

Address: _____

City: _____ State: _____ Zip: _____

PhoneNumber: _____ FaxNumber: _____

Email: _____

REGISTRATION: ☐ **Society Member \$215**

(Lunch is included in registration cost.)

☐ **Non Member \$265**

☐ **Visa** ☐ **M/C**

(We do not accept American Express)

Card No. _____ Exp.Date _____

Signature: _____

Mail checks and registration to: LA Engineering Society, 9643 Brookline Ave., Ste. 116 Baton Rouge, LA 70809

You may fax your registration to: (225) 924-2049 or email to les@les-state.org

For more information please visit our website: www.les-state.org

If you have any questions, please call the LES office at (225) 924-2021

Sorry, no refunds will be given after September 10, 2014


Seating is limited, so register now!!

A PICTORAL HISTORY OF LES


The following is a graphic illustration of the history of LES. These illustrations are reduced versions of the display panels that were on exhibit during the Society's Centennial Celebration and are now on permanent display in the Waldemar S. Nelson, PE Conference Room in the Louisiana Engineering and Surveying Center.

THE FORMATIVE YEARS

1897
1907



First organizational meeting was called by J. F. Coleman and held at Gallier Hall in New Orleans on December 22, 1897

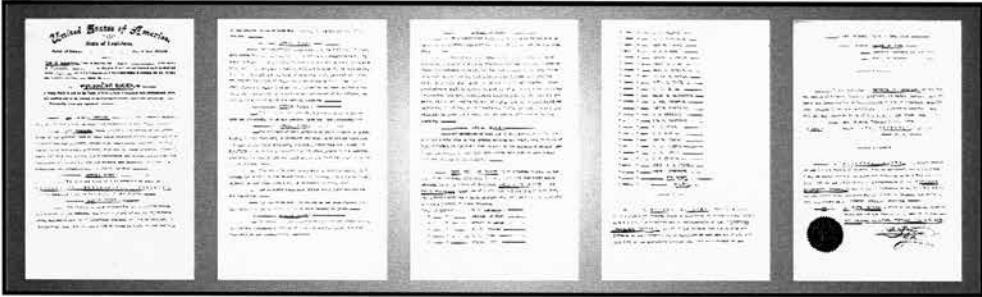


Work begun on passing a law to regulate the practice of engineering and land surveying

The purposes of the Louisiana Engineering Society are for the professional improvement of its members and for the advancement of the engineering profession


Membership growth continues

LES CHARTER




Charter signed by 29 original members and recorded on February 3, 1898

A Library Committee is established to secure books and periodicals for the use of all members



Sidney F. Lewis elected as the first LES President in 1898



First office established at 712 Union Street in New Orleans



PRESIDENTIAL HISTORY OF LES



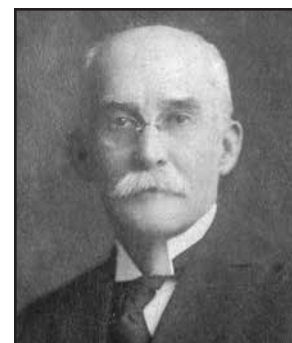
Sidney F. Lewis
LES President - 1898



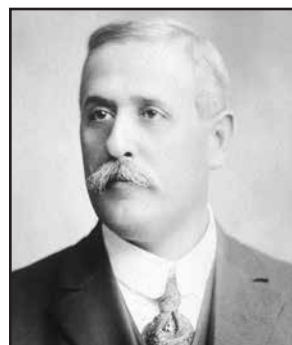
Thos. L. Raymond
LES President - 1899



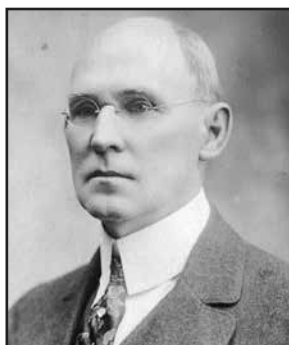
J. J. Malochie
LES President - 1900



Frank M. Kerr
LES President - 1901



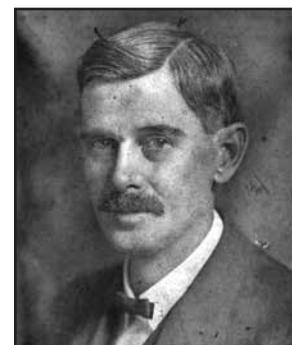
Alf. F. Theard
LES President - 1902



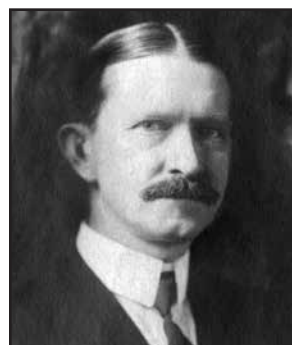
Alfred Raymond
LES President - 1903



Walter H. Hoffman
LES President - 1906



S. W. Wood
LES President - 1908



H. W. Charlton
LES President - 1909



W. B. Gregory
LES President - 1910

PROFESSIONAL
DEVELOPMENT
SEMINARS

PDH'S

**15
PDH's
for
\$500**

ATTENTION:
PROFESSIONAL ENGINEERS NEEDING PDH's

Our 22nd Annual 2-Day Seminar

New Orleans, LA	Sept. 3 & 4, 2014
Houston, TX	Sept. 8 & 9, 2014
Dallas, TX	Sept. 11 & 12, 2014
Little Rock, AR	Sept. 15 & 16, 2014
Memphis, TN	Sept. 30 & Oct. 1, 2014
Chicago, IL	Oct. 6 & 7, 2014
St. Louis, MO	Oct. 9 & 10, 2014
Nashville, TN	Oct. 16 & 17, 2014
Birmingham, AL	Oct. 27 & 28, 2014

For More Information: Call 901-493-6502 (Memphis, TN)
or Visit Our Website at www.PEseminars.com

THE SPEC SHEET

Daniel E. Mobley, CAE, *Executive Director*
American Council of Engineering Companies of Louisiana

A time for reflection and looking forward

The calendar says we are still in summer, but for the American Council of Engineering Companies of Louisiana, it's the beginning of a new year with a new Board of Governors and new objectives to meet. It's also an appropriate time to review our accomplishments of the last 12 months as we look forward to the challenges that lie ahead.

Transportation remains a large part of our members' workload, and ACEC/L initiated a project with the state Department of Transportation and Development to improve the consultant process. Together, we formed several working committees of ACEC/L and DOTD representatives to examine all aspects of the consultant relationship – procurement, contracting, program administration and claims. These committees made recommendations on improving each of the areas under their charge, and those recommendations were presented to the overall group.

Anyone who has worked with DOTD – or nearly any government agency – understands that change takes place slowly, in small increments. In that context, however, we were successful in arriving at several agreements with the DOTD representatives to make the processes more efficient and fair. Those agreements and recommended changes ultimately were presented to DOTD Secretary Sherri LeBas late last year, and we continue to work with DOTD to implement these improvements.

On the legislative front, ACEC/L was well represented on several issues, including:

- Participation on the design-build task force committee (SCR102 2013 session)
- Participation on the overhead power line study committee (HCR148, 2013 session)
- Construction at risk bill (SB 680), which was passed during the 2014 session
- Revisions to public bid law in partnership with AGC and AIA during the 2014 session

Despite our successes, ACEC/L is hardly content. Indeed, one of the most frustrating issues I have encountered as Executive Director is the difficulty we have in the political arena. This is especially true when it comes to transportation funding, the most important part of our industry's public sector work. The state Transportation Trust Fund will take an additional \$60 million hit this fiscal year by paying operational expenses for state police – an expense that traditionally has come from the state's general fund. Our friends in the legislature are sympathetic to our plight, but sympathy doesn't pay the bills. This is why one of the most significant accomplishments during 2013-14 was the Board of Governor's authorization for ACEC/L to create a political action committee.

Many of our member firms carry some influence in the political arena, but our ability to affect real change that

would benefit our industry is limited because our political power is diffused. The ACEC/L PAC is a move in the right direction to harness our collective political influence to make real and lasting systemic changes that will benefit our industry. With a concerted lobbying effort backed by the power of a well-financed PAC, my hope is that we can start making real progress on transportation and other issues important to our industry.

On the public relations front, ACEC/L had a very active year. In May, ACEC/L teamed up with ASCE, Louisiana Good Roads and LES to sponsor the first Infrastructure Awareness Day, and opportunity for our collective members to discuss important infrastructure matters with members of the legislature. This was an important first step for us, as an industry, to utilize our expertise with legislators to inform them of the dangers of not investing more resources into the building blocks of our society. Other public relations activities include volunteering at the Zurich Classic golf tournament in New Orleans to raise money for children's charities and sponsoring a UNO video to educate the public on the importance of millage taxes and improvements to the wastewater and sewerage systems.

We also will be making some enhancements to the ACEC/L website in the coming year and hope to be able to utilize the site as a marketing tool to potential members as well as serving as an information portal.

ACEC/L also worked on several "behind the scenes" items that are important to the work our members do. Some of these issues include:

- Continuation of adopting the NCEES definition of engineering with LAPELS
- Working with LAPELS on discontinuing the writing of investigative aids
- Working with the state Department of Health and Hospitals to change language on the Certificate of Completion form
- Working with LES on the definition of "incidental work" to prevent the State Fire Marshal's Office from accepting plans stamped by architects

In summary, this was a busy year, and we know we have many issues and challenges ahead of us. A special thanks to Sergio Girau, P.E., for his leadership this year. Sergio has been a very active president and is one of the driving forces behind many of the initiatives listed here. We also wish our incoming president, Brad Graff, P.E., all the best and pledge to work closely with him. Our organization works only if you help us make it better. We appreciate your membership in ACEC/L and do not hesitate to contact us if we can be of assistance.



Daniel E. Mobley, CAE

2014-2015 ACEC/L BOARD OF GOVERNORS

Executive Committee

President
D. Brad Graff, PE
(Cothren, Graff, Smoak Engineering, Inc.)

President Elect
Tony Arikol, PE
(PECC)

Vice President
Bob Schmidt, PE
(AECOM)

Treasurer
Kurt Evans, PE
(Digital Engineering, Inc.)

Secretary
Raymond J. Reaux, PE
(C.H. Fenstermaker & Associates, Inc.)

National Director
Sergio J. Girau
(Linfield, Hunter & Junius, Inc.)

ACEC/L Members at Large

Robert L. Cangelosi, Jr., PE
(T. Baker Smith)

Bruce H. Adams, PE
(URS Corporation)

J. Ryan Spillers, PE
(Lazenby & Associates)

David Dupre, PE
(Meyer Engineers, LTD.)

Andy Craig, PE
(Mohr & Associates)

Steven Robertson, PE
(John J. Guth Associates, Inc.)

Stephen Spohrer, PE
(GEC, Inc.)

ACEC/L Chapter Presidents

Baton Rouge Chapter President
Laurence Lambert, PE, PTOE
(Stantec)

Shreveport Chapter President
David Leslie, PE
(Forte & Tablada)

New Orleans Chapter President
Jim Martin, Ph.D., PE
(Design Engineering, Inc.)

Lafayette Chapter President
Craig Campbell, PE
(Associated Design Group, Inc.)



AMERICAN COUNCIL OF ENGINEERING COMPANIES
of Louisiana

Thanks to our ACEC LOUISIANA AFFILIATE MEMBERS

ACEC Business Insurance Trust
ACEC Life/Health Insurance Trust
Alexander & Sanders
BFM Corporation, LLC
Boh Bros. Construction Co., LLC
Brown & Brown of LA Insurance
ConTech Engineered Solutions, LLC
CROM Corporation
CxA Services, LLC
Cycle Construction Co., LLC
Delta Process Equipment
Resource Group, LLC
Environmental Technical Sales, Inc.
ExactSource
Hanson Pipe & Products, Inc.
HUB International Gulf South
Iberia Bank
LA Asphalt Pavement Association
Louisiana USA Federal Credit Union
Regions Bank
Whitney Bank

SAVE THE DATE!!!

Project Outlook 2014

November 13, 2014
Baton Rouge Renaissance Hotel



Contact: Janet Tomeny
jtomeny@acecl.org or call 225-927-7704



YOUR SINGLE CONNECTION FOR COMPLETE STORAGE SOLUTIONS



Southeastern Tank is the most trusted supplier of tank solutions in Louisiana. As an authorized distributor for CST Storage, Southeastern Tank offers its customers the best glass-fused-to-steel and epoxy coated storage solutions available.

With over 25 years serving the market, Southeastern Tank has the experience and expertise to specify, design, construct and service the AquaStore® or HydroTec® tank that best fits your application.

There's a reason Southeastern Tank has over 500 installations in five states. With the right products, best construction methods, and customizable fabrication, Southeastern Tank can deliver world class storage solutions to satisfy your local needs.



www.southeasterntank.com

Represented By: **Coastal Process, LLC**
28750 James Chapel Rd. North | Holden, LA 70744
1.888.667.4359 | www.coastalprocess.net

©2013 Southeastern Tank, Inc. AquaStore and HydroTec are registered trademarks of CST Industries, Inc.



Allen Precision Equipment
1-800-241-6223



Nikon's Nivo™ Series Nivo M and Nivo C

*Designed with high
productivity in mind*

FEATURES:

- Survey Pro software on-board Nivo C Series
- Windows CE touch-screen on Nivo C Series
- High quality Nikon optics
- Fast, accurate EDM
- Prism and reflectorless measurements
- Easy 2nd face keypad is optional
- Hot swappable batteries
- Compact, rugged, and lightweight
- Cable-free Bluetooth®
- Available in 2", 3" and 5" models

**CALL APE
FOR SPECIAL
PRICES**



Series includes:

- Support for USB memory sticks
- Wireless cable-free Bluetooth connections to external data collectors
- A USB High-speed data transfer

WWW.ALLENPRECISION.COM • 800-241-6223



SOLUTIONS START HERE

GOOD OPPORTUNITIES DO TOO

TBS is committed to precision, integrity, and ingenuity in providing tailored solutions to our associates and our clients. Our excellent compensation package includes base salary, profit sharing, 100% match 401K, education reimbursement, and health benefits.

For more information, visit www.tbsmith.com or email humanresources@tbsmith.com.



866.357.1050 tbsmith.com

Houma | Thibodaux | Baton Rouge | Lafayette | Shreveport | Houston | San Antonio

Engineers • Architects • Surveyors
PROFESSIONAL LIABILITY INSURANCE
Loss Prevention • Risk Management Assistance

**INDUSTRIAL • PUBLIC WORKS
PETROCHEMICAL • COMMERCIAL
ENVIRONMENTAL • GOVERNMENTAL
AND MOST OTHER PROJECT TYPES**

4610 Bluebonnet Blvd., Suite A
Baton Rouge, LA 70809
Phone: (225) 295-2995
Fax: (225) 368-2145
www.alexsand.com

**A & S Alexander
& Sanders**
INSURANCE SPECIALISTS

FOCUSED ON UTILITIES



- Subsurface Utility Engineering
- Ground Penetrating Radar
- High Frequency Radar Concrete Imaging
- 3D Underground Imaging
- Utility Coordination
- Utility Relocation Management
- Utility Relocation Inspection

John W. "Billy" Moore, PE
Billy.Moore@Cardno.com
225.218.5182

Learn more! SubsurfaceUtilityEngineering.com



Let us help you win your next LADOTD design project. Contact us today!



Taking care of your water and wastewater needs.

ENVIRONMENTAL TECHNICAL SALES, INC.

Ronnie Hebert, PE

7731 Office Park Boulevard
Baton Rouge, Louisiana 70809
Phone: (225) 295-1200
Fax: (225) 295-1800

**Water • • Wastewater • • Sludge • • Air
Equipment – Systems – Solutions**

LES CORPORATE SUSTAINING MEMBERS

ABMB Engineers

500 Main Street
 Baton Rouge, LA 70801
 (225) 765-7400

Brammer Engineering Inc

400 Texas St Ste 600
 Shreveport, LA 71001
 (318) 429-2345

D W Jessen & Associates, LLC

440 Kirby
 Lake Charles, LA 70601
 (337) 433-0561

Fugro Chance

200 Dulles Dr
 Lafayette, LA 70506
 (337) 237-1300

AECOM Technical Services, Inc.

232 Third Street
 Baton Rouge, LA 70801
 (225) 663-4311

Buchart Horn, Inc

18163 E. Petroleum Drive
 Baton Rouge, LA 70809
 (225) 755-2120

Delta Process Equipment

PO Box 969
 Denham Springs, LA 70727
 (225) 665-1666

Fugro Consultants, Inc.

916 Sampson St Ste E
 Westlake, LA 70669
 (337) 439-1731

Angelette-Picciola, Llc

PO Box 970
 Larose, LA 70373
 (985) 798-7700

Burk-Kleinpeter, Inc.

4176 Canal Street
 New Orleans, LA 70119
 (504) 486-5901

Denmon Engineering Co Inc

PO Box 8460
 Monroe, LA 71211
 (318) 388-1422

G.E.C., Inc.

8282 Goodwood Blvd.
 Baton Rouge, LA 70806
 (225) 612-3000

ARCADIS-US

10352 Plaza Americana Dr.
 Baton Rouge, LA 70816
 (225) 292-1004

C H Fenstermaker & Assoc Inc

135 Regency Square
 Lafayette, LA 70508
 (337) 237-2200

Dis-Tran Packaged Substations, LLC

4725 Hwy 28 E
 Pineville, LA 71360
 (318) 448-0274

Geoengineers, Inc.
 11955 Lakeland Park Blvd., Ste. 100
 Baton Rouge, LA 708094217
 (225) 293-2460

Ardaman & Associates, Inc.

PO Box 83710
 Baton Rouge, LA 70884
 (225) 752-4790

C.J. Savoie Consulting Engineers, Inc.

PO Drawer R
 Paincourtville, LA 70391
 (985) 369-2341

Domingue Szabo & Associates, Inc.

102 Asma Blvd, Suite 305
 Lafayette, LA 70508
 (337) 232-5182

Glenn G Shaheen & Associates, Inc.

P.O. Box 298
 Gonzales, LA 707070298
 (225) 644-5523

Audubon Engineering

111 Veterans Boulevard, Ste. 120
 Metairie, LA 70005
 (504) 833-5669

Civil And Structural Engineers, Inc.

PO Box 4825
 Lafayette, LA 70502
 (337) 232-3336

Dubroc Engineering Inc

202 Rue Iberville Ste 101
 Lafayette, LA 70508
 (337) 237-4520

Gulf States Engineering

17961 Painters Row
 Covington, LA 70435
 (985) 893-3631

Badeaux Engineers Inc

115 E. 6th Street
 Thibodaux, LA 70301
 (985) 447-2317

Conestoga-Rovers & Associates Inc

5551 Corporate Blvd., Ste. 200
 Baton Rouge, LA 70808
 (225) 292-9007

Duplantis Design Group Professional Corp

314 East Bayou Road
 Thibodaux, LA 70301
 (985) 447-0090

Huesker, Inc.

333 Eastside Drive, #40
 Fortson, GA 31808

Balar Associates Inc

631 Milam Street, Ste. 300
 Shreveport, LA 71101
 (318) 221-8312

Coyle Engineering Co Inc

PO Box 6177
 Bossier City, LA 71171
 (318) 746-8987

Eustis Engineering Services

3011 28th Street
 Metairie, LA 70002
 (504) 834-0157

Huval & Associates, Inc.

922 West Pont Des Mouton Road
 Lafayette, LA 70507
 (337) 234-3798

BCG Engineering & Consulting, Inc.

3012 26th Street
 Metairie, LA 70002
 (504) 454-3866

CPL Systems Inc

PO Box 60160
 Lafayette, LA 70596
 (337) 269-4699

Evans-Graves Engineers

9029 Jefferson Highway, Ste. 200
 Baton Rouge, LA 70809
 (225) 926-1620

ILD, Inc.

8867 Highland Road, #378
 Baton Rouge, LA 70808
 (225) 769-2780

Black & Veatch Corporation

14100 San Pedro Ave., Ste. 410
 San Antonio, TX 78232
 (210) 404-1330

CSRS

6767 Perkins Road, Ste 200
 Baton Rouge, LA 70808
 (225) 769-0546

Forte & Tablada Inc

9107 Interline Ave
 Baton Rouge, LA 70809
 (225) 927-9321

Infinity Engineering Consultants, Llc

PO Box 792745
 New Orleans, LA 70179
 (504) 304-0548

LES CORPORATE SUSTAINING MEMBERS

J Wayne Plaisance Inc

PO Drawer 730
Galliano, LA 70354
(985) 632-5596

LA Testing & Inspection

PO Box 2934
Lafayette, LA 70502
(337) 235-9411

Lanier & Associates Inc

4101 Magazine St
New Orleans, LA 70115
(504) 895-0368

Lazenby & Associates Inc

2000 North 7th Street
West Monroe, LA 71291
(318) 387-2710

Livingston Group, LLC

PO Box 1605
Lake Charles, LA 70602
(337) 527-3806

**Louisiana Asphalt Pavement
Association**

PO Box 80640
Baton Rouge, LA 70898
(225) 927-9737

Lourie Consultants

3924 Haddon St
Metairie, LA 70002
(504) 456-0966

LSU College of Engineering

3304 V Patrick Taylor Hall
Baton Rouge, LA 70803

M & E Consulting Inc

1304 Bertrand Dr A6
Lafayette, LA 70506
(337) 234-7474

Manchac Consulting Group, Inc.

10542 S. Glenstone Place
Baton Rouge, LA 70810
(225) 448-3972

Meyer & Associates

PO Box 2149
Sulphur, LA 70664
(337) 625-8353

**Meyer, Meyer, LaCroix & Hixson,
Inc.**

100 Engineer Place
Alexandria, LA 71303
(318) 448-0888

Michael Pisani & Associates Inc

1100 Poydras St, Ste 1430
New Orleans, LA 70163
(504) 582-2468

Modjeski & Masters Inc

1055 St Charles Ave, Ste 400
New Orleans, LA 70130
(504) 524-4344

Mohr and Associates, Inc.

6025 Buncombe Rd
Shreveport, LA 71129
(318) 686-7190

MSMM Engineering, LLC

4640 South Carrollton Avenue,
Ste. 210-12
New Orleans, LA 70119
(504) 559-1897

MWH Americans Inc.

7742 Office Park Blvd
Baton Rouge, LA 70809
(225) 926-3991

Neel-Schaffer, Inc.

314 Audubon Blvd
Lafayette, LA 70503
(337) 232-6111

NTB Associates, Inc.

525 Louisiana Avenue
Shreveport, LA 71101
(318) 226-9199

N-Y Associates Inc

2750 Lake Villa Dr Ste 100
Metairie, LA 70002
(504) 885-0500

Pan American Engineers

PO Box 89
Alexandria, LA 71309
(318) 473-2100

Parsons Brinckerhoff, Inc.

1100 Poydras Street, Ste. 1175
New Orleans, LA 70163
(504) 522-7143

Picciola & Associates Inc

PO Box 687
Cut Off, LA 70345
(985) 632-5786

Poche' Prouet Associates, LTD

100 Central Street, Ste 200
Lafayette, LA 70501
(337) 237-6517

Port Aggregates, Inc.

314 North Main Street
Jennings, LA 70546
(337) 824-7625

**Professional Engineering
Consultants Corporation**

7600 Innovation Park Drive
Baton Rouge, LA 70820
(225) 769-2810

Providence/GSE Associates LLC.

991 Grand Caillou Rd
Houma, LA 70363
(985) 876-6380

Sellers & Assoc Inc

148-B Easy St
Lafayette, LA 70506
(337) 232-0777

SJB Group, LLC

PO Box 1751
Baton Rouge, LA 70821
(225) 769-3400

Southeast Engineers, LLC

4915 S. Sherwood Forest Boulevard,
Ste. B
Baton Rouge, LA 70816
(225) 295-1880

Southeastern Tank, Inc.

60 Vesta Road
Lebanon, TN 37090
(615) 466-5220

Stokes & Spiehler USA, Inc.

PO Box 52006
Lafayette, LA 70505
(337) 233-6871

T. Baker Smith, LLC

PO Box 2266
Houma, LA 70361
(985) 868-1050

Taylor Power Systems

120 Interstate Drive
Richland, MS 39218
(601) 922-4444

Terracon Consultants

2822 B O'Neal Lane
Baton Rouge, LA 70816
(225) 344-6052

Trigon Associates, LLC.

1515 Poydras Street, Suite 2200
New Orleans, LA 70112

Volkert, Inc.

3466 Drusilla Lane, Ste. A
Baton Rouge, LA 70809
(225) 218-9440

W. S. Nelson & Co.

1200 St Charles Ave
New Orleans, LA 70130
(504) 593-5395

Waggoner Engineering, Inc.

1503 Goodwin Road, Ste. 203
Ruston, LA 71270
(318) 255-1872

Weigh Tech Engineering

2645 Rome Dr.
Baton Rouge, LA 70814
(225) 456-3671

Willbros Engineers, LLC

8641 United Plaza Blvd, Ste. 100
Baton Rouge, LA 70809

Louisiana Engineering Society

9643 Brookline, Suite 116
Baton Rouge, LA 70809-1488

Periodicals
POSTAGE PAID
Postal Permit
USPS 588360

PRECAST CONCRETE



**We can handle ALL
your Precast
Concrete needs!**



- **Pump Stations**
- **Oilfield Platforms**
- **Bridges**
- **LA DOTD
Concrete Barriers**

Port Aggregates Also Offers:

- **Precast Custom Applications**
- **Ready Mix Concrete**
- **Construction Aggregate**
- **Specialty Stones**



Contact us with any project
specifications or requirements
and we will provide you
with a "Precast Solution"

Port Aggregates, Inc.

314 N. Main St. • Jennings, LA 70546 • Phone: (337) 824-ROCK • Fax: (337) 824-7777 • 24 Hour Service: (337) 824-3338

www.portaggregates.com